

# HVP\*\*

## Features

Controlled avalanche characteristic combined with the ability to dissipate reverse power  
 Plastic package has underwriters laboratory lammability classification 94V-0  
 Low forward voltage drop  
 Typical IR less than 1  $\mu$ A  
 High overload surge capability  
 High temperature soldering guaranteed  
 260-C/10s/.375" (9.5mm) lead length at 5 lbs., (2.3kg) tension



## Mechanical data

**Case:** Reliable low cost construction utilizing molded plastic technique  
**Terminals:** Axial leads. Solderable per MIL-STD-202 Method 208  
**Polarity:** marking on body  
**Weight:** 32 g

We declare that the material of product compliance with RoHS requirements.

## 1.Electrical Characteristic

Maximum Ratings & Thermal Characteristics Ratings at 25°C ambient temperature unless otherwise specified.

Parameter	Symbol	HVP5	HVP8	HVP10	HVP12	HVP15	HVP16	HVP18	Unit
Maximum repetitive peak reverse voltage	$V_{RRM}$	5	8	10	12	15	16	18	KV
Maximum RSM voltage	$V_{RSM}$	3.5	5.6	7	8.4	10.5	11.2	12.6	KV
Maximum DC blocking voltage	$V_{DC}$	5	8	10	12	15	16	18	KV
Maximum average forward rectified current 0.375" (9.5mm) lead length at TA=55-C	$I_o$	750							mA
Peak forward surge current 8.3ms single half sine-wave superimposed on rated load (JEDEC Method)	$I_{FSM}$	30							A
Operating junction and storage temperature range	$T_J, T_{STG}$	-40 to +130							-C

Electrical Characteristics Ratings at 25°C ambient temperature unless otherwise specified.

Parameter	Symbol	HVP5	HVP8	HVP10	HVP12	HVP15	HVP16	HVP18	Unit
Maximum instantaneous forward voltage at 0.75A	$V_F$	10.0		12		14		16	V
Maximum DC reverse current at rated DC blocking voltage; TA=25°C	$I_R$	10.0							$\mu$ A

# HVP\*\*

## 2.Ratings and Characteristic Curves(TA= 25°C unless otherwise noted)

Fig. 1 - Forward Current Derating Curve

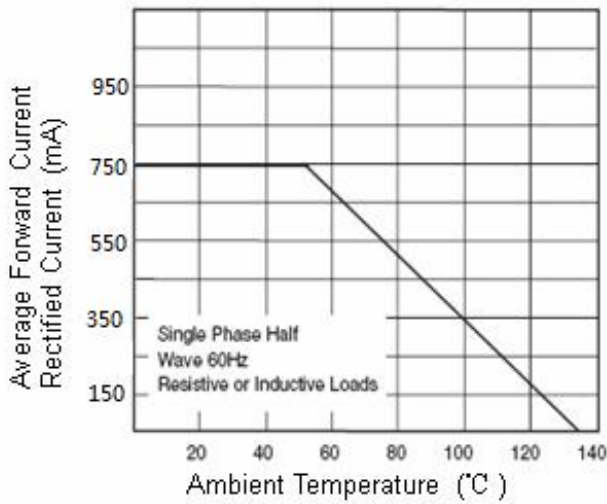


Fig. 2 - Maximum Non-Repetitive Peak Forward Surge Current

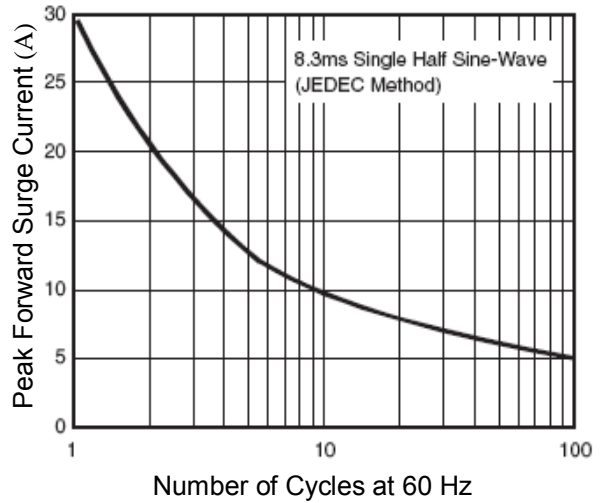


Fig. 3 - Typical Reverse Characteristics

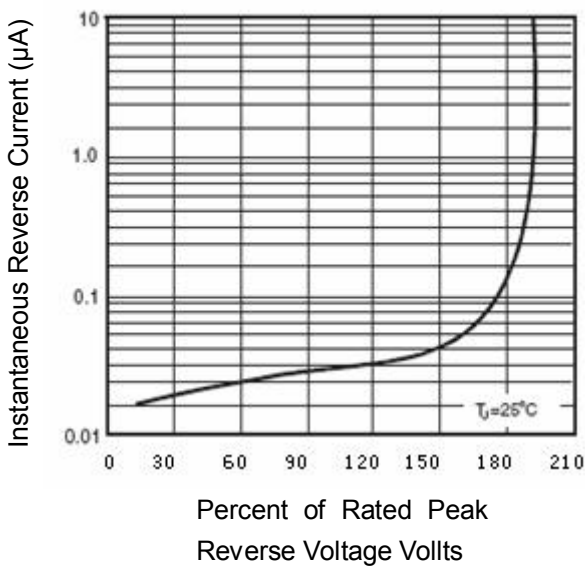
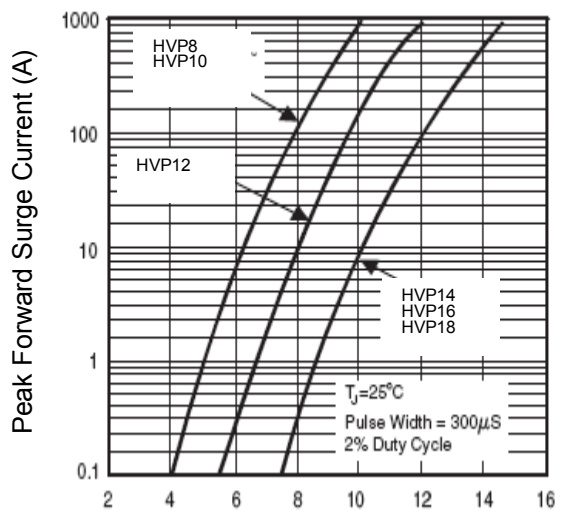
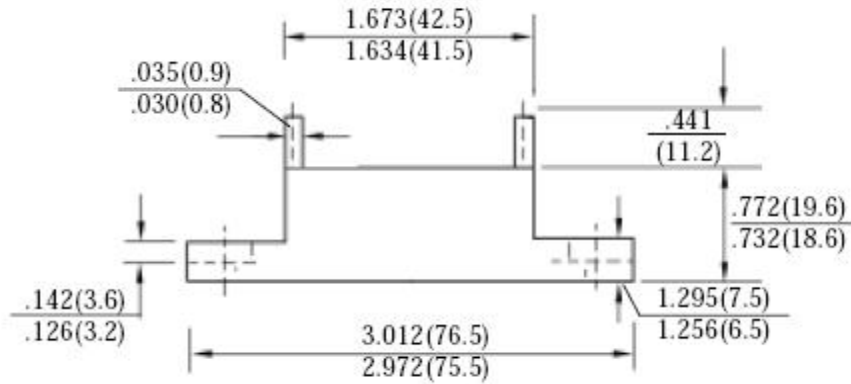
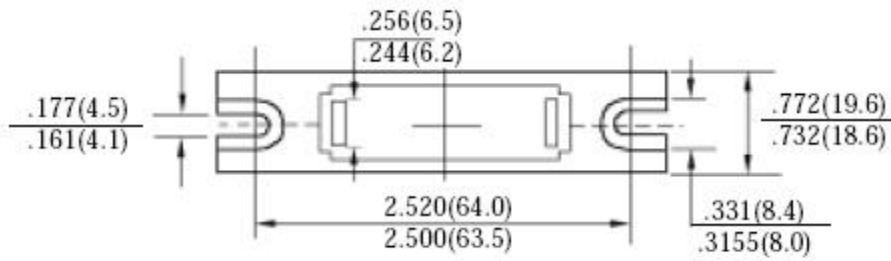


Fig.4-Typical Instantaneous Forward Characteristics



# HVP\*\*

## 3. dimension:



# HVP

# HVP\*\*

## 4.Update Record

版次	更新记录	更新作者	更新日期
1	第一版	余波	2012-7-26