

Schottky Barrier Diodes

40V

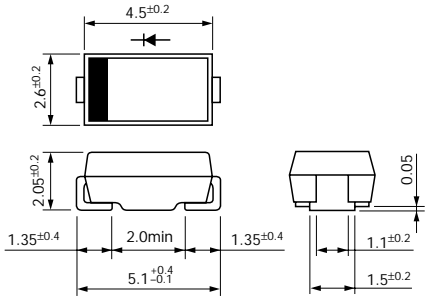
| V _{RM} (V) | Package | Part Number | I _F (AV) (A) | I _{FSM} (A) | T _J (°C) | T _{stg} (°C) | V _F (V) max | I _F (A) | I _R (mA) | I _R (H) (mA) | Ta (°C) | R _{th} (j-ℓ) R _{th} (j-c) (°C/W) | Mass (g) | Fig. No. | Page where characteristic curve is shown |
|------------------------|---------------|-----------------------------|----------------------------|--|------------------------|--------------------------|------------------------------|-----------------------|--|--|------------|--|-------------|-------------|--|
| | | | | 50Hz Half-cycle Sinewave Single Shot | | | | | V _R =V _{RM} max | V _R =V _{RM} max | | | | | |
| 40 | Surface Mount | SFPB-54 | 1.0 | 30 | -40 to +150 | 0.55 | 1.0 | 1 | 50 | 100 | 20 | 0.072 | 1 | 82 | |
| | | SFPB-64 | 1.5 | 60 | -40 to +150 | 0.55 | 2.0 | 5 | 50 | 100 | 20 | 0.072 | | 83 | |
| | | SFPB-74 | 2.0 | 60 | -40 to +150 | 0.5 | 2.0 | 5 | 50 | 100 | 20 | 0.072 | | — | |
| | | SPB-G34S | 3.0 | 50 | -40 to +150 | 0.55 | 3.0 | 3.5 | 50 | 100 | 5 | 0.29 | 2 | 84 | |
| | | SPB-G54S | 5.0 | 60 | -40 to +150 | 0.55 | 5.0 | 5 | 50 | 100 | 5 | 0.29 | | | |
| | | Surface Mount Center-tap | SPB-64S | 6.0 | 50 | -40 to +150 | 0.55 | 3.0 | 3.5 | 50 | 100 | 5 | 0.29 | | |
| | Axial | AK 04 | 1.0 | 25 | -40 to +150 | 0.55 | 1.0 | 1 | 50 | 100 (Tj) | 22 | 0.13 | 3 | 85 | |
| | | AW 04 | 1.0 | 25 | -40 to +150 | 0.58 | 1.0 | 5 | 35 | 150 | 22 | 0.13 | | — | |
| | | AE 04 | 1.0 | 25 | -40 to +150 | 0.6 | 1.0 | 0.1 | 10 | 150 (Tj) | 22 | 0.13 | | — | |
| | | EK 04 | 1.0 | 40 | -40 to +150 | 0.55 | 1.0 | 5 | 50 | 100 | 20 | 0.3 | 4 | 86 | |
| | | EE 04 * | 2.0 | 40 | -40 to +150 | 0.6 | 2.0 | 0.2 | 20 | 150 (Tj) | 20 | 0.3 | | — | |
| | | EK 14 | 1.5 | 40 | -40 to +150 | 0.55 | 2.0 | 5 | 50 | 100 | 17 | 0.3 | 5 | 86 | |
| | | RK 14 | 1.7 | 60 | -40 to +150 | 0.55 | 2.0 | 5 | 50 | 100 | 15 | 0.45 | | 6 | 87 |
| | | RK 34 | 2.5 | 50 | -40 to +150 | 0.55 | 2.5 | 5 | 50 | 100 | 12 | 0.6 | 7 | | |
| | RK 44 | 3.0 | 80 | -40 to +150 | 0.55 | 3.0 | 5 | 50 | 100 | 8 | 1.2 | 8 | | 88 | |
| | Frame-2Pin | FMB-G14 | 3.0 | 60 | -40 to +150 | 0.55 | 3.0 | 5 | 100 | 100 | 4 | | 2.1 | | 9 |
| | | FMB-G14L | 5.0 | 60 | -40 to +150 | 0.55 | 5.0 | 5 | 100 | 100 | 4 | 2.1 | | | |
| | | FMB-G24H | 10.0 | 150 | -40 to +150 | 0.55 | 10.0 | 10 | 65 | 100 | 4 | 2.1 | | | |
| | Center-tap | MPE-24H | 15 | 100 | -40 to +150 | 0.6 | 7.5 | 0.75 | 50 | 150 (Tj) | 2.5 | 1.04 | 10/10 | 85 | |
| | | FMB-24 | 4.0 | 50 | -40 to +150 | 0.55 | 2.0 | 5 | 35 | 100 | 4 | 2.1 | 11 | 90 | |
| | | FMB-24M | 6.0 | 60 | -40 to +150 | 0.55 | 3.0 | 5 | 35 | 100 | 4 | 2.1 | | 91 | |
| | | FMW-24L | 10.0 | 100 | -40 to +150 | 0.55 | 5.0 | 5 | 175 | 150 | 4 | 2.1 | | 90 | |
| | | FMB-24L | 10 | 60 | -40 to +150 | 0.55 | 5.0 | 5 | 35 | 100 | 4 | 2.1 | 12 | 94 | |
| | | FME-2104 | 10 | 80 | -40 to +150 | 0.6 | 5.0 | 0.5 | 30 | 100 | 4 | 2.1 | | | 92 |
| | | FMB-34S | 12 | 75 | -40 to +150 | 0.58 | 6 | 5 | 35 | 100 | 2 | 5.5 | 11 | 90 | |
| | | FMW-24H | 15 | 120 | -40 to +150 | 0.55 | 7.5 | 7.5 | 250 | 150 | 4 | 2.1 | | | 92 |
| | | FME-24H | 15 | 100 | -40 to +150 | 0.6 | 7.5 | 0.75 | 50 | 100 | 4 | 2.1 | 12 | 93 | |
| | | FMB-24H | 15 | 100 | -40 to +150 | 0.55 | 7.5 | 7.5 | 50 | 100 | 4 | 2.1 | | | 90 |
| FMB-34 | | 15 | 150 | -40 to +150 | 0.55 | 7.5 | 10 | 65 | 100 | 2 | 5.5 | 11 | 81 | | |
| FMB-2204 | | 20 | 150 | -40 to +150 | 0.55 | 10 | 10 | 350 | 150 | 4 | 2.1 | | | 91 | |
| FMW-2204 | | 20 | 120 | -40 to +150 | 0.55 | 10 | 10 | 350 | 150 (Tj) | 4 | 2.1 | 12 | 93 | | |
| FMB-2304 | | 30 | 150 | -40 to +150 | 0.55 | 15 | 15 | 500 | 150 | 4 | 2.1 | | | 91 | |
| FMB-34M | 30 | 300 | -40 to +150 | 0.55 | 15.0 | 20 | 100 | 100 | 2 | 5.5 | | | | | |

* : Under development

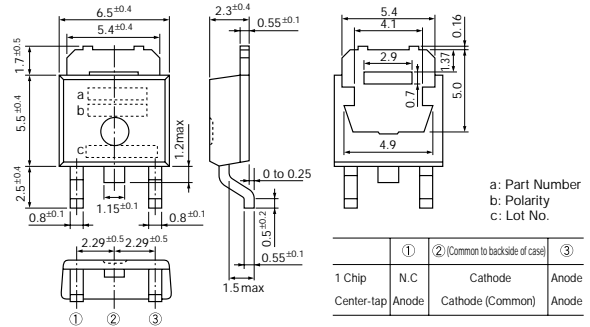
Schottky Barrier Diodes 40V

External Dimensions Flammability: UL94V-0 or Equivalent (Unit: mm)

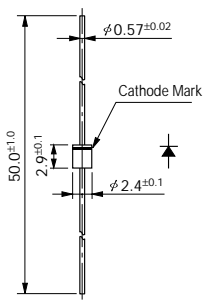
1



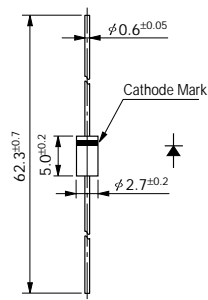
2



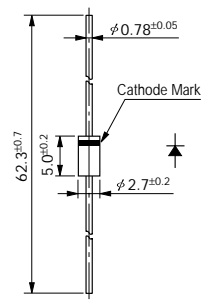
3



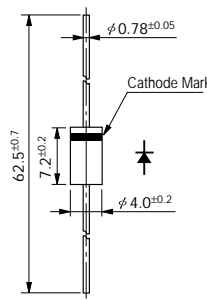
4



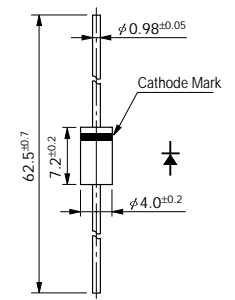
5



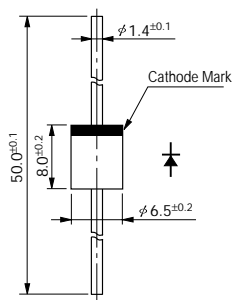
6



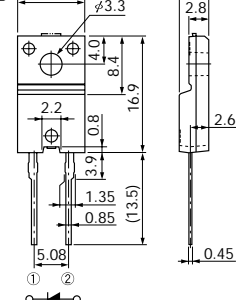
7



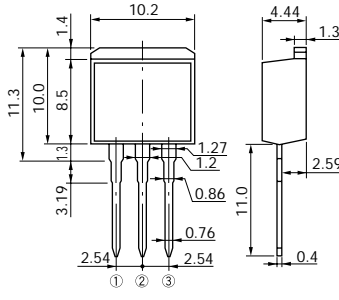
8



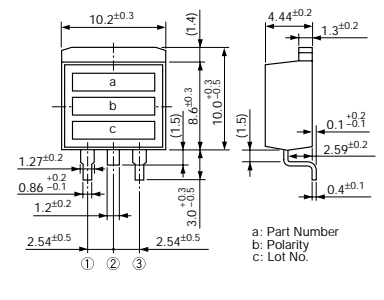
9



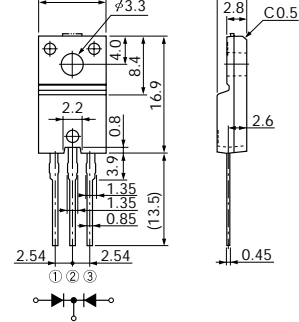
10



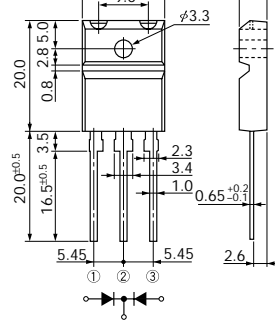
10



11

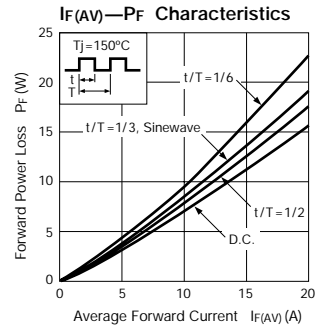
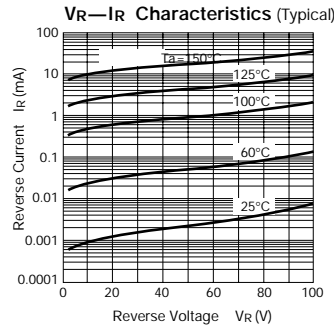
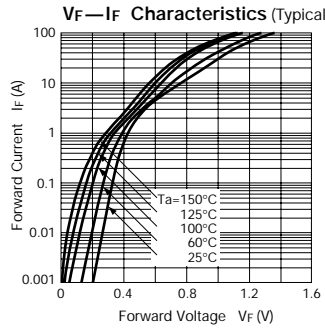
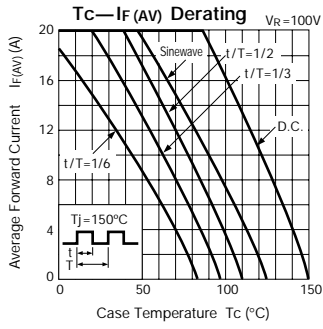


12

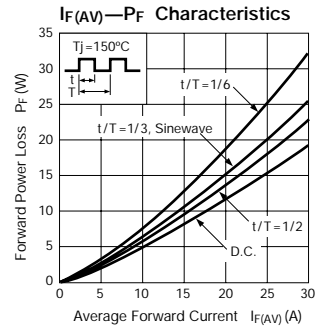
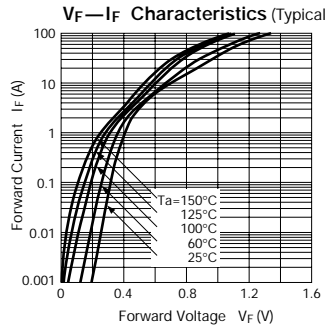
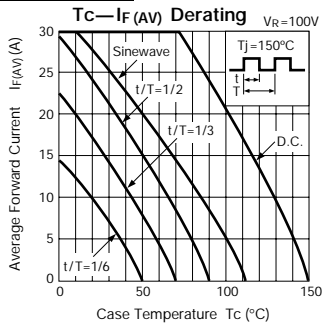


Characteristic Curves Schottky Barrier Diodes

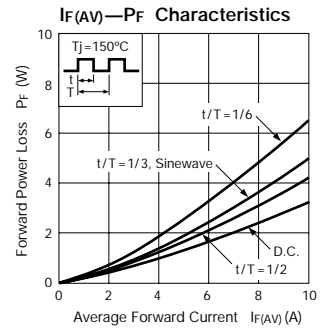
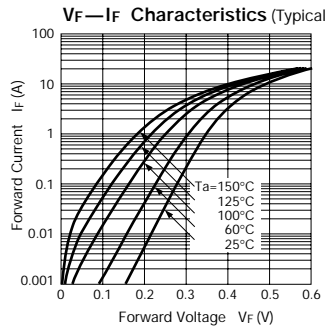
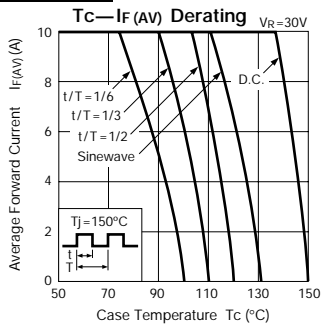
FME-220A



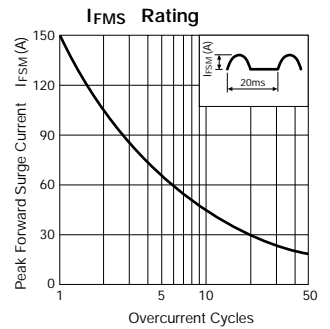
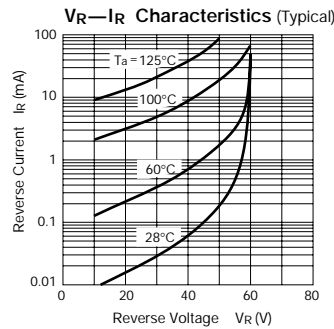
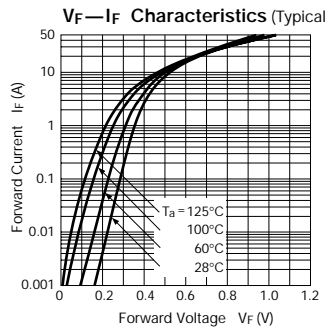
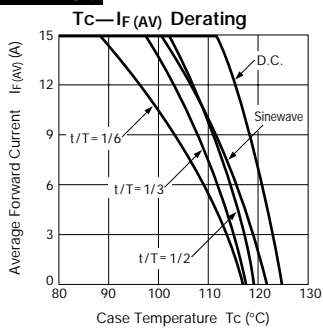
FME-230A



FMJ-23L



FMB-34



FMB-34M

