

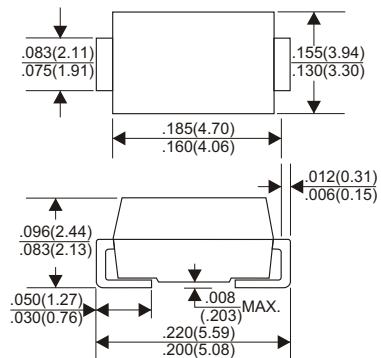
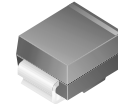
RoHS Compliant Product

A suffix of "-C" specifies halogen & lead-free

DO-214AA (SMB)

FEATURES

- . Low forward voltage drop
- . High current capability
- . High reliability
- . High surge current capability
- . Epitaxial construction
- . Lead Free Product



MECHANICAL DATA

- . Case: Molded plastic
- . Epoxy: UL 94V-0 rate flame retardant
- . Metallurgically bonded construction
- . Polarity: Color band denotes cathode end
- . Mounting position: Any
- . Weight: 0.102 grams

MAXIMUM RATINGS AND ELECTRICAL CHARACTERISTICS

Rating 25°C ambient temperature unless otherwise specified.
Single phase half wave, 60Hz, resistive or inductive load.
For capacitive load, derate current by 20%.

TYPE NUMBER	SM520B	SM540B	SM560B	SM5100B	UNITS
Maximum Recurrent Peak Reverse Voltage	20	40	60	100	V
Working Peak Reverse Voltage	20	40	60	100	V
Maximum DC Blocking Voltage	20	40	60	100	V
Maximum Average Forward Rectified Current, See Fig. 1	5.0				A
Peak Forward Surge Current, 8.3 ms single half Sine-wave superimposed on rated load (JEDEC method)	125				A
Maximum Instantaneous Forward Voltage at 5.0A	0.55		0.65	0.83	V
Maximum DC Reverse Current Ta=25 °C	0.2		0.1	0.05	mA
At Rated DC Blocking Voltage Ta=100 °C	30		15	7.5	
Typical Junction Capacitance (Note 1)	380				pF
Typical Thermal Resistance RθJC (Note 2)	10				/ W
Operating Temperature Range T _J	-50 ~ +150				
Storage Temperature Range T _{STG}	-65 ~ +175				

NOTES:

1. Measured at 1MHz and applied reverse voltage of 4.0V D.C.
2. Thermal Resistance Junction to Ambient Vertical PC Board Mounting 0.5"(12.7mm) Lead Length.

● RATING AND CHARACTERISTIC CURVES (SM520B THRU SM5100B)

FIG .1-TYPICAL FORWARD CURRENT DERATING CURVE

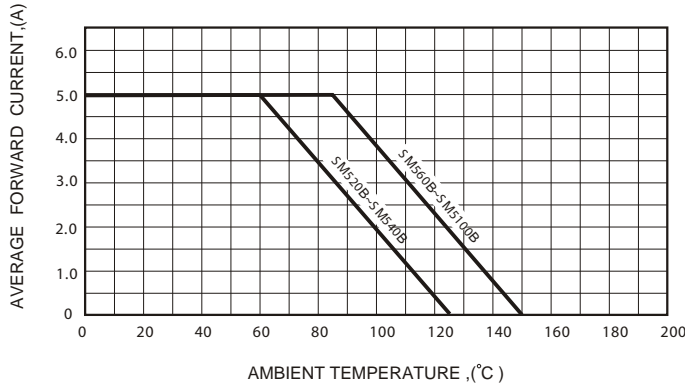


FIG .2-TYPICAL FORWARD CHARACTERISTICS

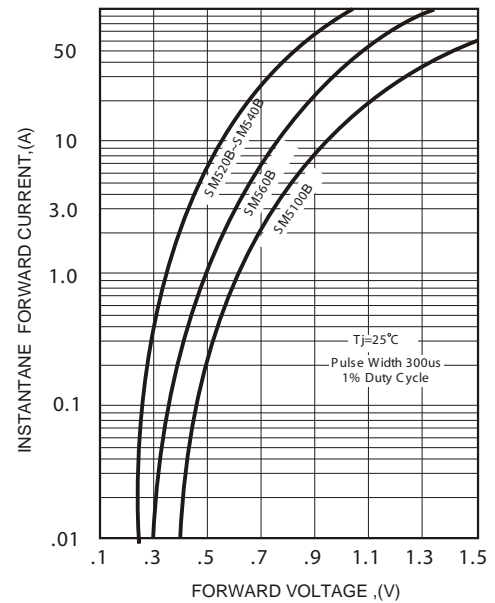


FIG .3-MAXIMUM NON-REPETITIVE FORWARD SURGE CURRENT

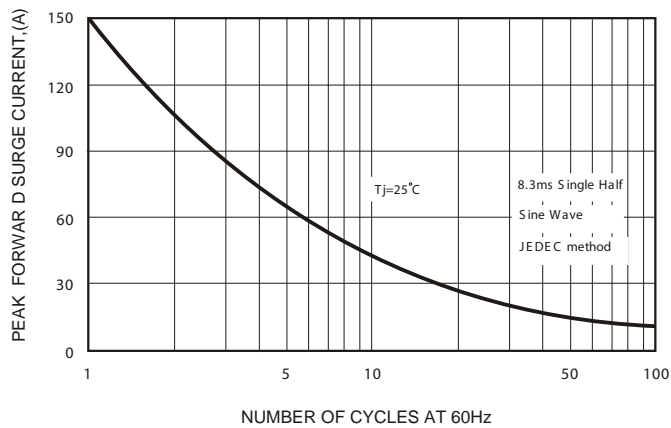


FIG .5 - TYPICAL REVERSE CHARACTERISTICS

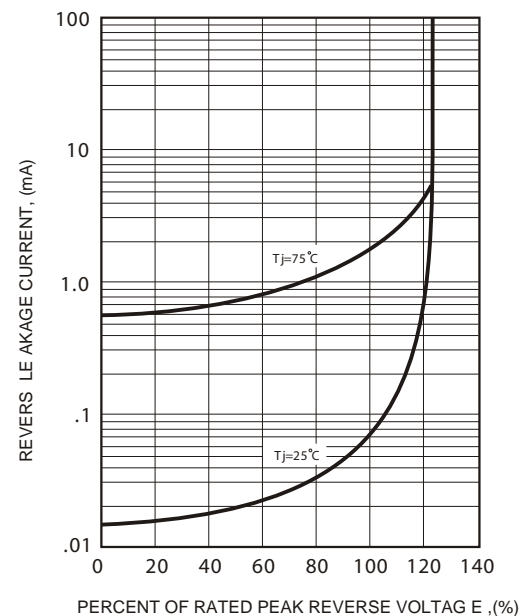


FIG .4-TYPICAL JUNCTION CAPACITANCE

