

# Potting Shell 507-035



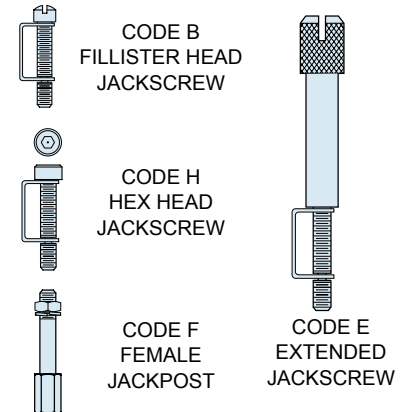
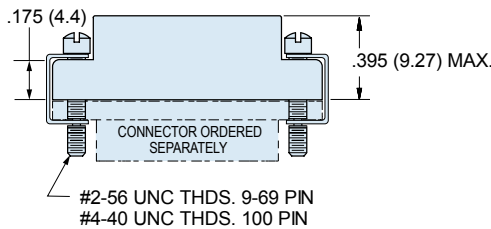
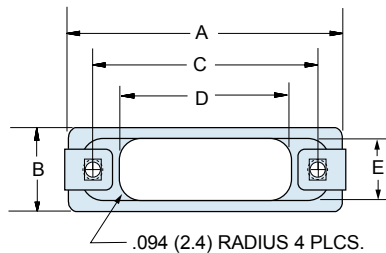
**Potting Shells** provide easy encapsulation of Micro-D solder cup terminations. These potting shells provide .25 inches (6.3 mm.) of depth.

### MATERIALS

Shell	Aluminum Alloy 6061 -T6
Clips	17-7PH Stainless Steel
Hardware	300 Series Stainless Steel

### HOW TO ORDER 507-035 POTTING SHELLS

Series	Shell Finish	Connector Size	Hardware Option
507-035	<b>E</b> – Chem Film	<b>09</b> <b>51</b>	<b>Omit for Fillister Head Jackscrew</b> <b>H</b> – Hex Head Jackscrew <b>E</b> – Extended Jackscrew <b>F</b> – Jackpost, Female
	<b>J</b> – Cadmium, Yellow Chromate	<b>15</b> <b>51-2</b>	
	<b>M</b> – Electroless Nickel	<b>21</b> <b>67</b>	
	<b>NF</b> – Cadmium, Olive Drab	<b>25</b> <b>69</b>	
	<b>Z2</b> – Gold	<b>31</b> <b>100</b>	
		<b>37</b>	
Sample Part Number			
507-035	M	25	H



Size	A Max.		B Max.		C		D		E	
	In.	mm.	In.	mm.	In.	mm.	In. ± .030	mm. ± 0.8	In. ± .030	mm. ± 0.8
09	.850	21.59	.370	9.40	.565	14.35	.31	7.9	.26	6.6
15	1.000	25.40	.370	9.40	.715	18.16	.48	12.2	.26	6.6
21	1.150	29.21	.370	9.40	.865	21.97	.65	16.5	.26	6.6
25	1.250	31.75	.370	9.40	.965	24.51	.75	19.1	.26	6.6
31	1.400	35.56	.370	9.40	1.115	28.32	.88	22.4	.26	6.6
37	1.550	39.37	.370	9.40	1.265	32.13	1.03	26.2	.26	6.6
51	1.500	38.10	.410	10.41	1.215	30.86	.98	24.9	.30	7.6
51-2	1.910	48.51	.370	9.40	1.615	41.02	1.38	35.0	.26	6.6
67	2.310	58.67	.370	9.40	2.015	51.18	1.78	45.2	.26	6.6
69	1.810	45.97	.410	10.41	1.515	38.48	1.28	32.5	.30	7.6
100	2.235	56.77	.460	11.68	1.800	45.72	1.35	34.3	.36	9.1

Glenair:

[507-035M100](#) [507-035M15](#) [507-035M21](#) [507-035M25](#) [507-035M31H](#) [507-035M37](#) [507-035M51](#) [507-035NF09](#)  
[507-035NF15](#) [507-035NF25](#) [507-035M09H](#) [507-035M100H](#) [507-035M15H](#) [507-035M21H](#) [507-035M25H](#) [507-](#)  
[035M37H](#) [507-035M09](#) [507-035C15](#) [507-035J09](#)