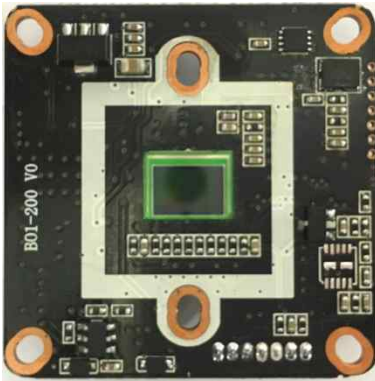


AH21A2

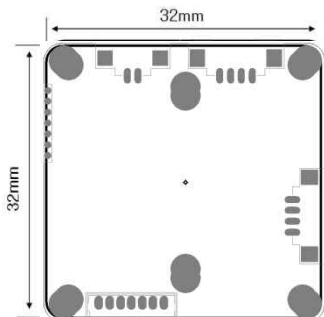
2.1Mega pixel Camera



Features

- 1/2.9" SONY CMOS Sensor
- HD Resolution : 1080P AHD
- D-WDR (Digital WDR)
- DNR (Digital Noise Reduction: 2D + 3D)
- Privacy Mask Function
- Motion Detection
- Defog : Defogging foggy video image
- Dimension : 32mm x 32mm

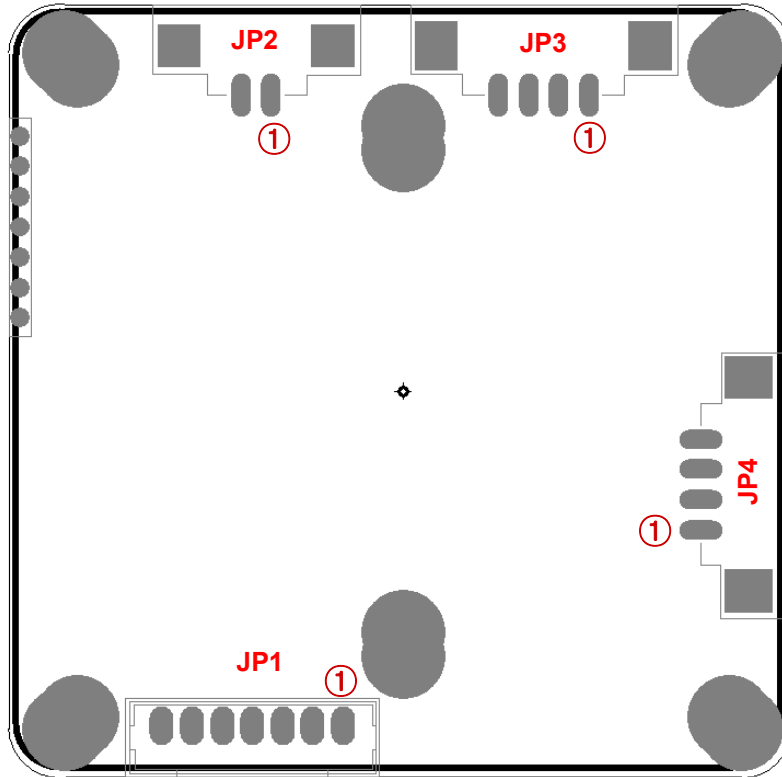
Dimensions



Specifications

| AH21A2 | |
|---------------------|---|
| Image Device | 1/2.9" 2.1 Mega Pixel SONY CMOS |
| Scanning system | Progressive |
| Resolution | ANALOG HD : 1080P 30FPS, 720P 60FPS ANALOG CVBS :1280H NTSC / PAL |
| Total Pixels | 2001(H) x 1121(V) = 2.24 M pixel |
| Effective Pixels | 1985(H) x 1105(V) = 2.19 M pixel |
| Shutter Speed | Auto / Manual (1/50(1/60) ~ 1/50,000) |
| Min. illumination | Color : 1.0 Lux / BW : 0.5 Lux |
| | Color DSS: 0.002 Lux / BW DSS : 0.001 Lux |
| S/N Ratio | More Than 50dB (AGC off) |
| Lens | DC / Manual |
| AGC | Off / 0 ~ 15 |
| SENS UP | Off / x2 ~ x30 |
| DAY & NIGHT | Auto / COLOR / B&W / EXTERN |
| WHITE BALANCE | ATW / AWC / INDOOR / OUTDOOR / Manual /AWB |
| Backlight | Off/ BLC / HSBLB |
| MIRROR | Off / H / V / H&V / ROTATE |
| D-WDR | Off / 0 ~ 8 |
| DNR | Off / LOW / Middle / High |
| PRIVACY | 4 Masks |
| MOTION | Off / On |
| DEFOG | Off / Auto |
| Operating Temp./Hum | -10℃ ~ +50℃ / Max 90%RH |
| Storage Temp./Hum | -20℃ ~ + 60℃ / Max 90%RH |
| Language | English/ Chinese/ Germany/ French/ Italian/ Spanish/ Polish/ Russain/ Portuguese/ Netherlands/ Turkish |
| Power Input | DC 12V |
| Video Output | AHD, TVI, CVI, CVBS |
| Size | 32 x 32mm |

Connector Pin map



| Connector | Pin number | Pin name | Description |
|-----------|------------|----------|------------------------------|
| JP1 | 1 | GND | Board Ground |
| | 2 | 12V | DC 12V input |
| | 3 | VBS | Composite Video Output |
| | 4 | GND | Board Ground |
| | 5 | E-V | Extra Composite Video Output |
| | 6 | AD/KEY | AD/KEY |
| | 7 | MD | Motion Detection |
| JP2 | 1 | TDN MA + | DRIVE1 |
| | 2 | TDN MA - | DRIVE2 |
| JP3 | 1 | DMP+ | DAMP+ |
| | 2 | DMP- | DAMP- |
| | 3 | DRV+ | DRIVE+ |
| | 4 | GND | Board Ground |
| JP4 | 1 | 12V | DC 12V Output |
| | 2 | GND | Board Ground |
| | 3 | IR | Day & Night Input (HIGH/LOW) |
| | 4 | CDS | ADC Input |

Address

Rm.915, Keumkang Hightech Valley, 177, Sagimakgol-ro Jungwon-ku, Seongnam-si, Gyeonggi-do, Korea