

Specification of CR2430

Coin Type Crimp-sealed
Primary Lithium Battery

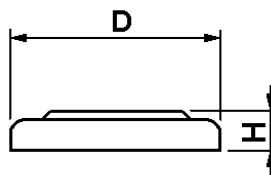
| | | |
|---------------------------------|---------------------------|---------------|
| Nominal Capacity * ¹ | | 280 mAh |
| Nominal Voltage | | 3 V |
| Standard Discharge Current | | 0,3 mA |
| Max. Discharge Current | Continuous * ² | 6 mA |
| | Pulse * ³ | 50 mA |
| Temperature Range | | -20°C ~ +70°C |
| Weight | | 4,0 g |
| Dimensions | Height (H) | 3,0 mm |
| | Diameter (D) | 24,5 mm |

*1 Nominal capacity is determined to an end voltage of 2,0V when the battery is allowed to discharge at a standard current level at 23°C.

*2 Current value is determined so that 50% of the nominal capacity is obtained with an end voltage of 2,0V at 23°C.

*3 Current value for obtaining 2,0V cell voltage when 15 sec. pulse applied at 50% discharge depth (23°C).

Dimensions



Size:

D = 24,5_{-0,2}

H = 3,0_{-0,3}

(unit: mm)