

- 2 - 15 way
- Accepts wire of 18 - 24 AWG
- Housing, Wafer and Terminal Available
- Current rating 7A, AC, DC
- Voltage rating 250V AC, DC
- PCB thickness 1.6mm



### SPECIFICATION

#### General

**Withstand Voltage:** 1500v AC/min  
**Insulation Resistance:** 1000mΩ min  
**Temperature Range:** -25°C to +85°C

#### Wafer

**Material:**  
**Post:** Brass, Tin/Plated  
**Base:** Nylon 66, UL94V-0 or 94V-0

#### Housing

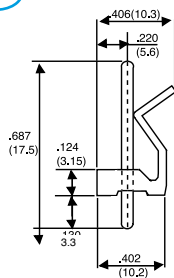
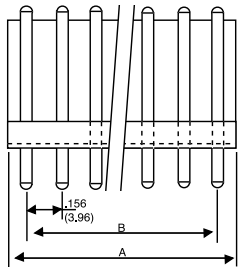
**Material:** Nylon 66, UL94V-0 or 94V-0

#### Terminal

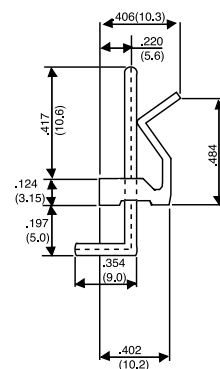
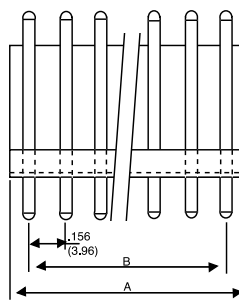
**Wire Acceptance:** 18-24 AWG  
**Material:** Brass  
**Finish:** Tin/plated 40μ" min  
**Thickness:** 0.25mm

### OUTLINE DRAWING

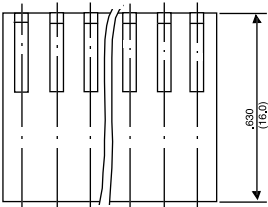
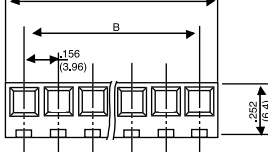
DBC23.96xT



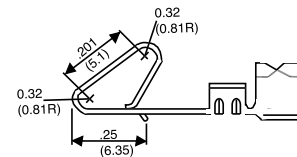
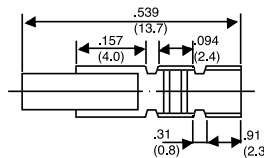
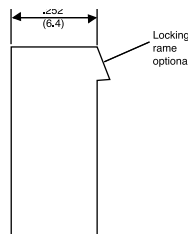
DBC23.96xS



DBC23.96xH



DBC23.96 PIN



Dim	mm
A	No Ways x3.96
B	(No ways x3.96) - 3.96
C	(No ways x 4)x0.4

### ORDERING INFORMATION

DBC	2	3.96	2	T
Dubilier Connectors	Series	Pitch	N° of Ways	Style
		3.96 = 3.96mm pitch	2 = 2ways 10=10ways etc	T =Top Entry S = Side Entry 90° H = Housing

DBC	2	3.96	PIN
Dubilier Connectors	Series	Pitch	Pin
		3.96 = 3.96mm pitch	