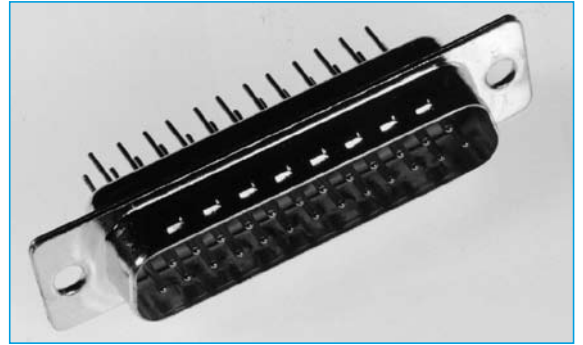


## FILTERED D CONNECTORS

- 9, 15, 25, or 37 way
- Turned Pin (Machined) Contact
- Gold Plated Contacts
- Metal Housing
- Current Rating - 5Amps
- Four standard capacitor values

## SOLDER PIN STRAIGHT



## SPECIFICATION

**Insulators:** Polyester GF UL 94 V-0  
**Contacts:** Copper alloy  
**Contact finish:** Hard - Gold-plated over nickel, solder area  
 Tin plated  
**Housing:** Steel tin plated  
**Working voltage:** 100 VDC  
 Insulation Gr. A according to VDE 0110  
**Dielectric stand. voltage:** 424V DC      707V DC  
 Standard      High voltage  
**Contact resistance:** Max 10mΩ  
**Insulation resistance:** ≤ 1GΩ@100 VDC  
**Current rating:** 5,0 A (20°C)  
**Voltage surge 10/700 μs:** 300V      500V  
 Standard      High voltage

**Mating / Unmating forces:** 9-pol. <30    15-pol. < 50  
 25-pol. < 83    37-pol. < 123  
 50-pol. < 167

**Temperature range working:** -25° to + 105°C

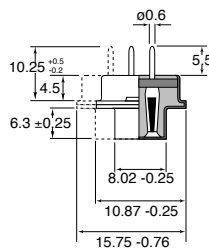
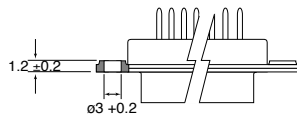
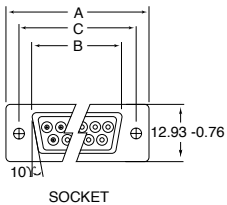
**Humidity:** 40° C / 85 %

**Capacitor values:** Typ A, 180 pF  
 Typ B, 370 pF  
 Typ D, 830 pF  
 Typ E, 1300 pF

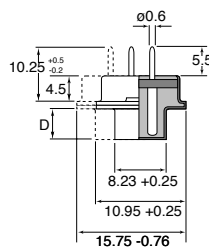
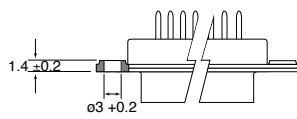
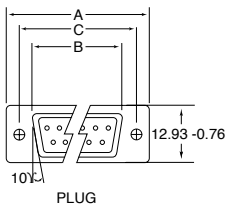
**Quality class:**  
 Quality class 3= 50 mating cycles  
 Quality class 2= 200 mating cycles  
 Quality class 1= 500 mating cycles

SECTION 11

## OUTLINE DRAWING



No. of pos.	A -0.76	B -0.25	C
9	31.19	16.46	25.00 <sup>+0.12</sup> <sub>-0.13</sub>
15	39.52	24.79	33.30 <sup>+0.12</sup> <sub>-0.13</sub>
25	53.42	38.50	47.04 ± 0.13
37	69.70	54.96	63.50 ± 0.13
50	67.31	52.55	61.10 <sup>+0.14</sup> <sub>-0.11</sub>



No. of pos.	A -0.76	B +0.25	C	D -0.30
9	31.19	16.79	25.00 <sup>+0.12</sup> <sub>-0.13</sub>	6.12
15	39.52	25.12	33.30 <sup>+0.12</sup> <sub>-0.13</sub>	6.12
25	53.42	38.84	47.04 ± 0.13	5.99
37	69.70	55.30	63.50 ± 0.13	5.99
50	67.31	52.68	61.10 <sup>+0.14</sup> <sub>-0.11</sub>	5.99

## ORDERING INFORMATION

DBC	FD	M	SS	09	E	3
Dubilier Connectors	Series	Connector Type	Contact Style	Nº of Ways	Capacitor Value	Quality Class
	FD = Filtered D	M = Male(plug) F = Female(socket)	SS = Solder Straight	09 = 9ways 15 = 15ways 25 = 25ways 37 = 37ways	A = 144pF - 216pF B = 296pF - 444pF D = 664pF - 996pF E = 1040pF-1560pF	3 = class 3 2 = class 2 1 = class 1