

ALTERNATOR DIODE FOR AUTOMOTIVE APPLICATION.

FEATURES

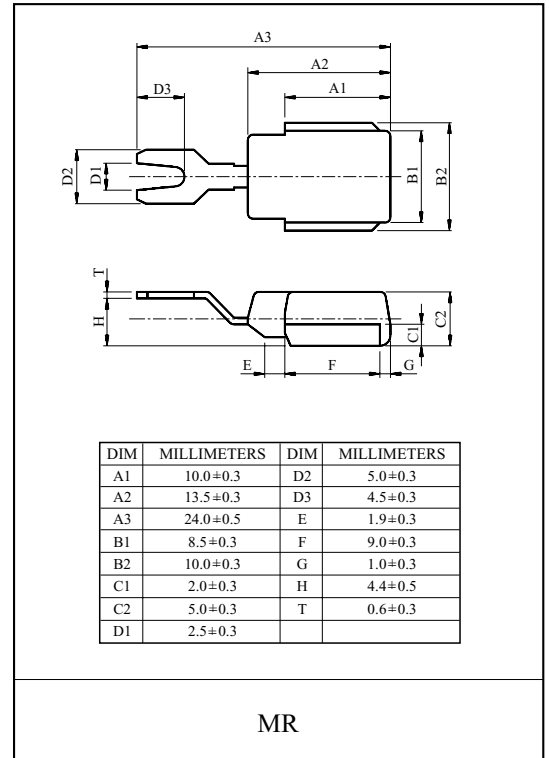
- Average Forward Current : $I_{F(AV)}=25A$.
- Repetitive Peak Reverse Voltage : $V_{RRM}=200V$.

POLARITY

- E30A2CS (+ Type)
- E30A2CR (- Type)

MAXIMUM RATING ($T_a=25^\circ C$)

CHARACTERISTIC	SYMBOL	RATING	UNIT
Repetitive Peak Reverse Voltage	V_{RRM}	200	V
Average Forward Current	$I_{F(AV)}$	25	A
Peak 1 Cycle Surge Current	I_{FSM}	250 (60Hz)	A
Junction Temperature	T_j	-40 ~ 150	$^\circ C$
Storage Temperature Range	T_{stg}	-40 ~ 150	$^\circ C$



ELECTRICAL CHARACTERISTICS ($T_a=25^\circ C$)

CHARACTERISTIC	SYMBOL	TEST CONDITION	MIN.	TYP.	MAX.	UNIT
Peak Forward Voltage	V_{FM}	$I_{FM}=100A$	-	-	1.30	V
Reverse Voltage	V_R	$I_R=5mA$	200	-	-	V
Repetitive Peak Reverse Current	I_{RRM}	$V_{RRM}=200V$	-	-	50	μA
Reverse Recovery Time	t_{rr}	$I_F=0.1A, I_R=0.1A$	-	-	15	μS
Thermal Resistance	$R_{th(j-c)}$	DC total junction to case	-	-	1.0	$^\circ C/W$

E25A2CS, E25A2CR

