

### SUPER FAST RECTIFIERS

VOLTAGE RANGE: 100 --- 600 V  
CURRENT: 2.0 A

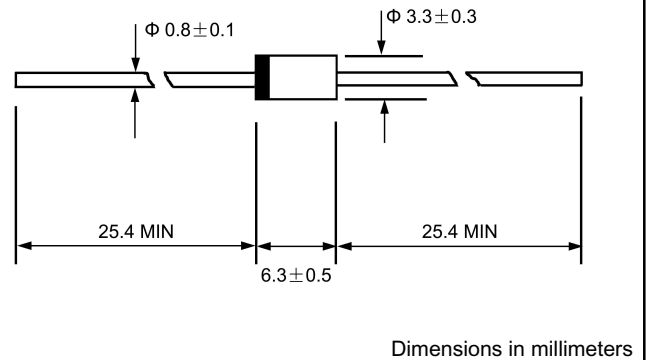
#### FEATURES

- ◇ Low cost
- ◇ Low leakage
- ◇ Low forward voltage drop
- ◇ High current capability
- ◇ Easily cleaned with alcohol, Isopropanol and similar solvents
- ◇ The plastic material carries U/L recognition 94V-0

#### MECHANICAL DATA

- ◇ Case: JEDEC DO--15, molded plastic
- ◇ Terminals: Axial lead, solderable per MIL- STD-202, Method 208
- ◇ Polarity: Color band denotes cathode
- ◇ Weight: 0.14 ounces, 0.39 grams
- ◇ Mounting position: Any

#### DO - 15



#### MAXIMUM RATINGS AND ELECTRICAL CHARACTERISTICS

Ratings at 25°C ambient temperature unless otherwise specified.

Single phase, half wave, 60 Hz, resistive or inductive load. For capacitive load, derate by 20%.

		ER201	ER202	ER203	ER204	ER206	UNITS
Maximum recurrent peak reverse voltage	$V_{RRM}$	100	200	300	400	600	V
Maximum RMS voltage	$V_{RMS}$	70	140	210	280	420	V
Maximum DC blocking voltage	$V_{DC}$	100	200	300	400	600	V
Maximum average forward rectified current 9.5mm lead length, @ $T_A=75^\circ C$	$I_{F(AV)}$	2.0					A
Peak forward surge current 8.3ms single half-sine-wave superimposed on rated load @ $T_J=125^\circ C$	$I_{FSM}$	50.0					A
Maximum instantaneous forward voltage @ 2.0A	$V_F$	0.95		1.25		1.7	V
Maximum reverse current @ $T_A=25^\circ C$ at rated DC blocking voltage @ $T_A=100^\circ C$	$I_R$	5.0 200.0					$\mu A$
Maximum reverse recovery time (Note 1)	$t_{rr}$	35					ns
Typical junction capacitance (Note 2)	$C_J$	22					pF
Typical thermal resistance (Note 3)	$R_{\theta JA}$	40					$^\circ C/W$
Operating junction temperature range	$T_J$	- 55 ---- + 125					$^\circ C$
Storage temperature range	$T_{STG}$	- 55 ---- + 150					$^\circ C$

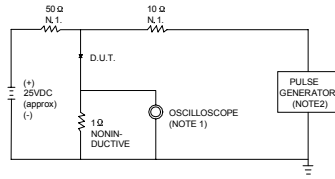
NOTE: 1. Measured with  $I_F=0.5A$ ,  $I_R=1A$ ,  $t_{rr}=0.25A$ .

2. Measured at 1.0MHz and applied reverse voltage of 4.0V DC.

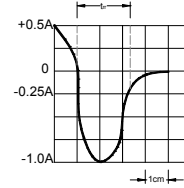
3. Thermal resistance junction to ambient.

www.galaxycn.com

**FIG.1 – TEST CIRCUIT DIAGRAM AND REVERSE RECOVERY TIME CHARACTERISTIC**

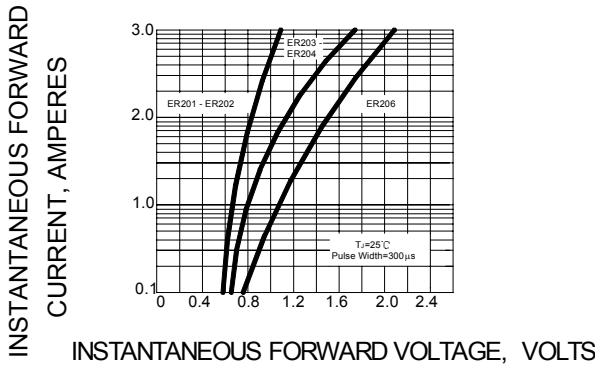


NOTES: 1. RISE TIME = 7ns MAX INPUT IMPEDANCE = 1MΩ. 22pF.  
 2. RISE TIME = 10ns MAX SOURCE IMPEDANCE = 50 Ω.

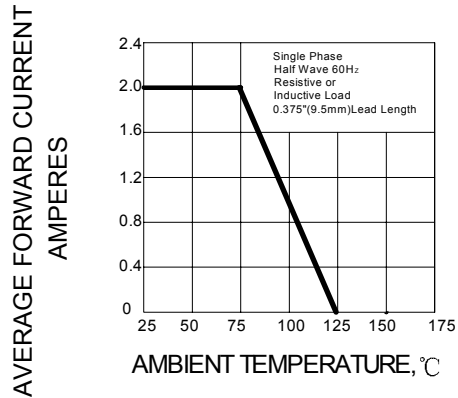


SET TIME BASE FOR 10/20 ns/cm

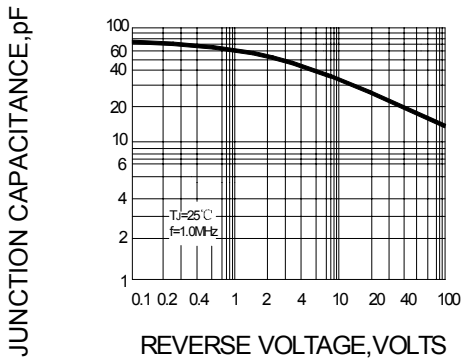
**FIG.2 – TYPICAL FORWARD CHARACTERISTIC**



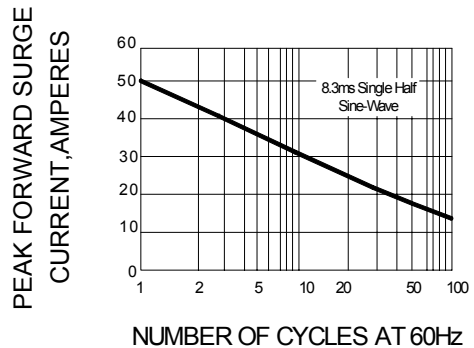
**FIG.3 – FORWARD DERATING CURVE**



**FIG.4 – TYPICAL JUNCTION CAPACITANCE**



**FIG.5 – PEAK FORWARD SURGE CURRENT**



**FIG.6 – TYPICAL REVERSE CHARACTERISTICS**

