

**FAST RECOVERY RECTIFIERS**

**VOLTAGE RANGE: 200 --- 1000 V**  
**CURRENT: 0.5 A**

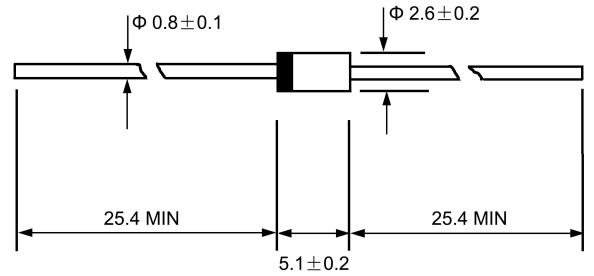
**FEATURES**

- ◇ Low cost
- ◇ Diffused junction
- ◇ Low leakage
- ◇ Low forward voltage drop
- ◇ High current capability
- ◇ Easily cleaned with Freon, Alcohol, Isopropanol and similar solvents
- ◇ The plastic material carries U/L recognition 94V-0

**MECHANICAL DATA**

- ◇ Case: JEDEC DO-41, molded plastic
- ◇ Terminals: Axial lead, solderable per MIL-STD-202, Method 208
- ◇ Polarity: Color band denotes cathode
- ◇ Weight: 0.012 ounces, 0.34 grams
- ◇ Mounting position: Any

**DO - 41**



Dimensions in millimeters

**MAXIMUM RATINGS AND ELECTRICAL CHARACTERISTICS**

Ratings at 25°C ambient temperature unless otherwise specified.

Single phase, half wave, 60 Hz, resistive or inductive load. For capacitive load, derate by 20%.

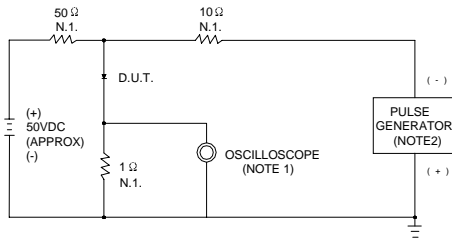
		ERA22 -02	ERA22 -04	ERA22 -06	ERA22 -08	ERA22 -10	UNITS
Maximum recurrent peak reverse voltage	$V_{RRM}$	200	400	600	800	1000	V
Maximum RMS voltage	$V_{RMS}$	140	280	420	560	700	V
Maximum DC blocking voltage	$V_{DC}$	200	400	600	800	1000	V
Maximum average forward rectified current 9.5mm lead length, @ $T_A=75^\circ C$	$I_{F(AV)}$	0.5					A
Peak forward surge current 8.3ms single half-sine-wave superimposed on rated load @ $T_J=125^\circ C$	$I_{FSM}$	20.0					A
Maximum instantaneous forward voltage @ 0.5 A	$V_F$	1.5					V
Maximum reverse current @ $T_A=25^\circ C$ at rated DC blocking voltage @ $T_A=100^\circ C$	$I_R$	5.0 100.0					$\mu A$
Maximum reverse recovery time (Note1)	$t_{rr}$	100					ns
Typical junction capacitance (Note2)	$C_J$	12					pF
Typical thermal resistance (Note3)	$R_{\theta JA}$	55					$^\circ C/W$
Operating junction temperature range	$T_J$	-55----+150					$^\circ C$
Storage temperature range	$T_{STG}$	-55----+150					$^\circ C$

NOTE: 1. Measured with  $I_F=0.5A$ ,  $I_R=1A$ ,  $I_r=0.25A$ .

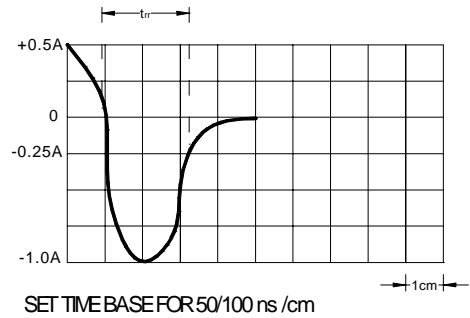
2. Measured at 1.0MHz and applied reverse voltage of 4.0V DC.

3. Thermal resistance from junction to ambient.

**FIG.1 – REVERSE RECOVERY TIME CHARACTERISTIC AND TEST CIRCUIT DIAGRAM**

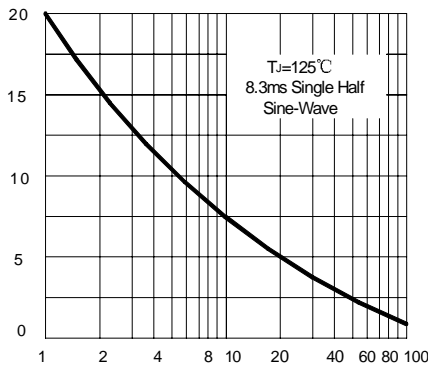


NOTES: 1. RISE TIME = 7ns MAX. INPUT IMPEDANCE = 1MΩ, 22pF  
 2. RISE TIME = 10ns MAX. SOURCE IMPEDANCE = 50Ω



**FIG.2– PEAK FORWARD SURGE CURRENT**

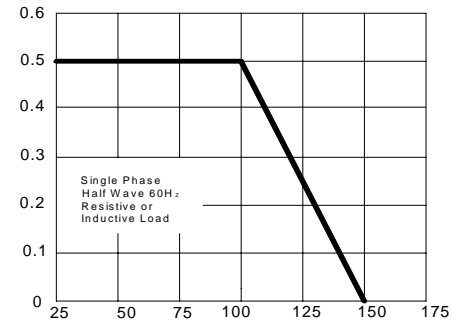
PEAK FORWARD SURGE CURRENT  
AMPERES



NUMBER OF CYCLES AT 60 Hz

**FIG.3– FORWARD DERATING CURVE**

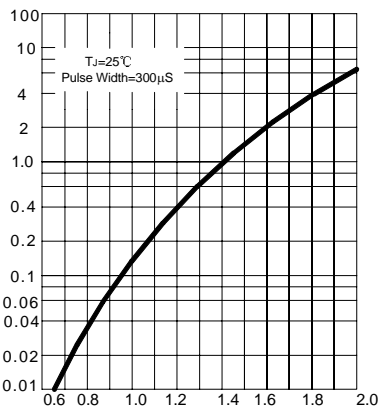
AVERAGE FORWARD RECTIFIED CURF  
CURRENT, AMPERES



AMBIENT TEMPERATURE, °C

**FIG.4 – CURRENT DERATING CURVE**

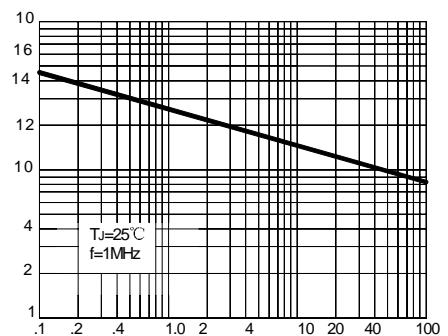
INSTANTANEOUS FORWARD CURRENT  
AMPERES



INSTANTANEOUS FORWARD VOLTAGE, VOLTS

**FIG.5– TYPICAL JUNCTION CAPACITANCE**

JUNCTION CAPACITANCE, pF



INSTANEOUS FORWARD VOLTAGE, VOLTS