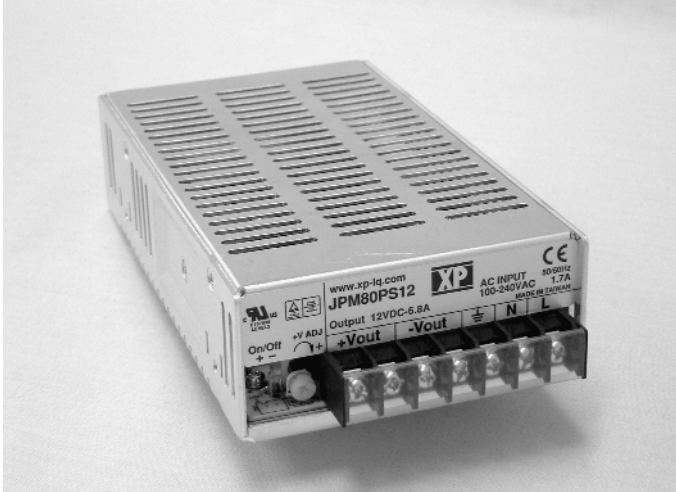


AC/DC Industrial Type

80 Watts JPM80 Series

XPIQ inc.

Intelligent Design Quality Product



CE Marked LVD

Low Cost

High Reliability

Power Factor Corrected

Low Ripple Noise

Adjustable Output

Specification

Input

Input Voltage	• 85-264 VAC
Input Frequency	• 47-63 Hz
DC Input Voltage	• 120-370 VDC
Power Factor	• 0.98 at 115 VAC, 0.96 at 230 VAC
Input Current	• 1.3 A max at 115 VAC
Inrush Current	• 40 A at 230 VAC cold start
Start-Up time	• 600 ms
Rise Time	• 30 ms

Output

Output Voltage	• 3.3 V to 48 V single outputs
Output Power	• 80 Watts, see table
Output Voltage Adjustment	• +10%, -5%
Minimum Load	• 0 minimum load required
Tolerance	• $\pm 2\%$ max
Line Regulation	• $\pm 0.5\%$
Load Regulation	• $\pm 1\%$ max, see table
Ripple & Noise	• 100 mV typical, see table
Transient Response	• 5% max deviation, 500 μ s recovery time for a 50% load change
Temperature Coefficient	• 0.05%/°C
Hold Up Time	• 20 ms minimum at 230 VAC
Overvoltage Protection	• 110-135 %
Overcurrent Protection	• 140-170%, constant current auto restart

General

Efficiency	• See Table
MTBF	• 100,000 hrs min
Leakage Current	• <2 mA at 240 VAC
Isolation Voltage	• 3000 VAC Input to Ground 1500 VAC Input to Output 500 VAC Output to Ground
Size	• 7.05" x 3.90" x 1.77"
Weight	• 600 grams

Environmental

Operating Temperature	• -10 °C to +60 °C (see derating chart)
Cooling	• Convection cooled
Humidity	• 20-90% RH non condensing
Storage Temperature	• -20 °C to +85 °C
Shock & Vibration	• 10-500 Hz 2 G 10 min/cycle for 60 min each axis

Safety and EMC

Safety Approvals	• UL1950, CSA C22.2 No 950 per cUL EN60950, CE Mark LVD
EMI/EMC	• Meets EN61000-3-2, -3 ENV50204 CISPR22 (EN55022) Class B
Immunity & Surge	• EN61000-4-2, -3, -4, -5, -6, -8, -11

OUTPUT VOLTAGE & CURRENT RATINGS

JPM80


Output Voltage	Output Current	Output Power ⁽¹⁾	Ripple & Noise (Pk-Pk)	Load Regulation	Efficiency	Model Number ⁽²⁾
3.3 V	16.0 A	53 W	100 mV	±1.0%	70%	JPM80PS03
5.0 V	16.0 A	80 W	100 mV	±1.0%	76%	JPM80PS05
7.5 V	10.7 A	80 W	100 mV	±1.0%	80%	JPM80PS07
12.0 V	6.8 A	80 W	100 mV	±0.5%	81%	JPM80PS12
13.5 V	6.0 A	80 W	100 mV	±0.5%	82%	JPM80PS13
15.0 V	5.3 A	80 W	100 mV	±0.5%	83%	JPM80PS15
24.0 V	3.4 A	80 W	150 mV	±0.5%	84%	JPM80PS24
27.0 V	3.0 A	80 W	150 mV	±0.5%	85%	JPM80PS27
48.0 V	1.7 A	80 W	250 mV	±0.5%	85%	JPM80PS48

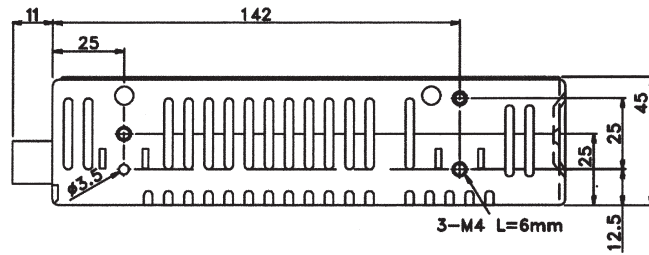
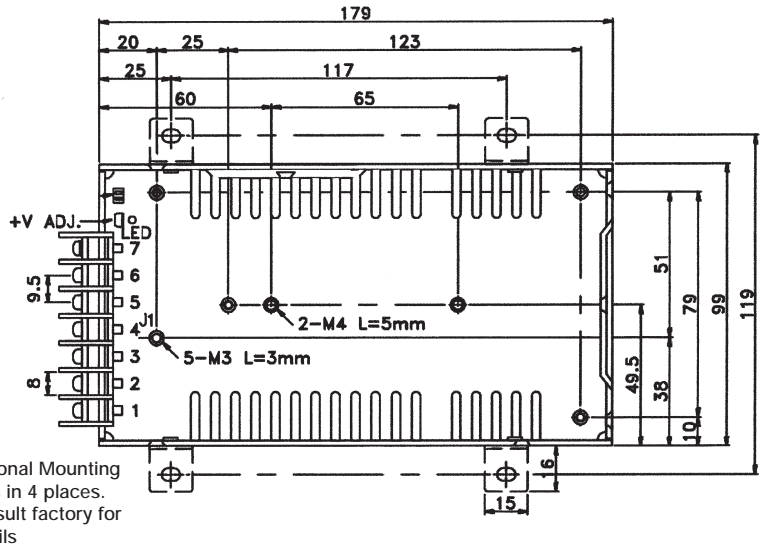
Notes

1. Max output increases to 125% of rated power when input voltage is between 180 VAC to 264 VAC and ambient temperature is less than +40 °C convection cooled or +55 °C with 18 CFM airflow.
2. Part numbers in bold type are standard stock models, all others are build to order.
3. For optional Remote On/Off, add suffix "R" to part number. Example: JPM80PS03R On=3-15 VDC, Off=<3 VDC.

Mechanical Details - 80 Watts

Dimensions in inches (mm).

TERMINAL Pin No. Assignment
 PIN 1,2: AC Input
 Pin 3: FG 
 Pin 4,5: DC Output -V
 Pin 6,7: DC Output +V
 Weight: Approx 600 grams



Derating Graph - 80 Watts

