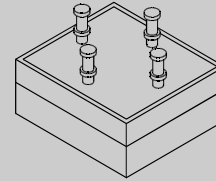


# 200 V - 1,000 V Single Phase Bridge

20.0 A - 25.0 A Forward Current

70 ns - 3000 ns Recovery Time

**LTI402 - LTI410**  
**LTI402F - LTI410F**  
**LTI402UF - LTI410UF**

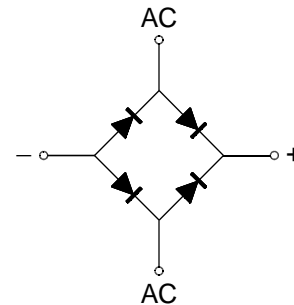
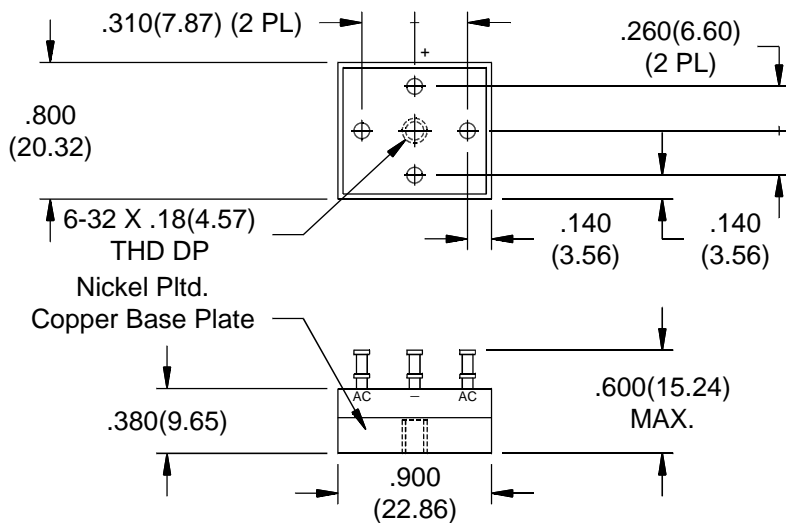


## ELECTRICAL CHARACTERISTICS AND MAXIMUM RATINGS

Part Number	Working Reverse Voltage (V <sub>rw</sub> )	Average Rectified Current @TC (I <sub>o</sub> )		Reverse Current @ V <sub>rw</sub> (I <sub>r</sub> )		Forward Voltage (V <sub>f</sub> )		1 Cycle Surge Current tp=8.3ms (I <sub>fsm</sub> )	Repetitive Surge Current (I <sub>frm</sub> )	Reverse Recovery Time (1) (T <sub>rr</sub> )	Thermal Impd. θ <sub>J-C</sub>
		55°C	100°C	25°C	100°C	25°C		25°C	25°C	25°C	
	Volts	Amps	Amps	µA	µA	Volts	Amps	Amps	Amps	ns	°C/W
LTI402	200	25.0	18.0	2.0	50	1.3	6.0	80	20	3000	0.75
LTI406	600	25.0	18.0	2.0	50	1.3	6.0	80	20	3000	0.75
LTI410	1000	25.0	18.0	2.0	50	1.3	6.0	80	20	3000	0.75
LTI402F	200	20.0	15.0	2.0	50	1.7	6.0	80	20	150	0.75
LTI406F	600	20.0	15.0	2.0	50	1.7	6.0	80	20	150	0.75
LTI410F	1000	20.0	15.0	2.0	50	1.7	6.0	80	20	150	0.75
LTI402UF	200	20.0	15.0	2.0	50	1.7	6.0	80	20	70	0.75
LTI406UF	600	20.0	15.0	2.0	50	1.7	6.0	80	20	70	0.75
LTI410UF	1000	20.0	15.0	2.0	50	1.7	6.0	80	20	70	0.75

(1)T<sub>rr</sub> Testing: I<sub>f</sub>=0.5A, I<sub>r</sub>=1.0A, I<sub>rr</sub>=0.25A \*Op. Temp. & Stg. Temp. = -55°C to +150°C Isolation Voltage: 2000V

**10**



Dimensions: In. (mm) • All temperatures are ambient unless otherwise noted. • Data subject to change without notice.



**VOLTAGE MULTIPLIERS INC.**  
 8711 W. Roosevelt Ave.  
 Visalia, CA 93291

TEL 559-651-1402  
 FAX 559-651-0740  
[www.voltagemultipliers.com](http://www.voltagemultipliers.com)

# LTI402 - LTI410 • LTI402F - LTI410F • LTI402UF - LTI410UF

