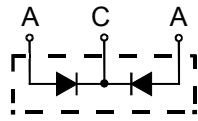


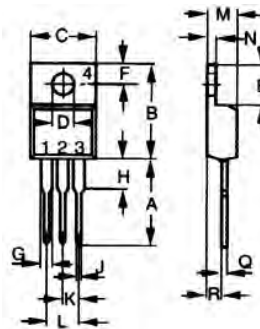
MBR2070CT thru MBR20100CT

High T_{jm} Low IRRM Schottky Barrier Diodes



A=Anode, C=Cathode, TAB=Cathode

Dimensions TO-220AB



Dim.	Inches		Millimeter	
	Min.	Max.	Min.	Max.
A	0.500	0.550	12.70	13.97
B	0.580	0.630	14.73	16.00
C	0.390	0.420	9.91	10.66
D	0.139	0.161	3.54	4.08
E	0.230	0.270	5.85	6.85
F	0.100	0.125	2.54	3.18
G	0.045	0.065	1.15	1.65
H	0.110	0.230	2.79	5.84
J	0.025	0.040	0.64	1.01
K	0.100	BSC	2.54	BSC
M	0.170	0.190	4.32	4.82
N	0.045	0.055	1.14	1.39
Q	0.014	0.022	0.35	0.56
R	0.090	0.110	2.29	2.79

	V _{RRM}	V _{RMS}	V _{DC}
	V	V	V
MBR2070CT	70	49	70
MBR2080CT	80	56	80
MBR2090CT	90	63	90
MBR20100CT	100	70	100

Symbol	Characteristics	Maximum Ratings	Unit	
I _{AV}	Maximum Average Forward Rectified Current @T _c =120°C	20	A	
I _{FSM}	Peak Forward Surge Current 8.3ms Single Half-Sine-Wave Superimposed On Rated Load (JEDEC METHOD)	150	A	
dv/dt	Voltage Rate Of Change (Rated V _R)	10000	V/us	
V _F	Maximum Forward Voltage (Note 1)	I _F =10A @T _J =25°C I _F =10A @T _J =125°C I _F =20A @T _J =25°C I _F =20A @T _J =125°C	0.75 0.85 0.85 0.95	V
I _R	Maximum DC Reverse Current At Rated DC Blocking Voltage	@T _J =25°C @T _J =125°C	0.1 100	mA
R _{θJC}	Typical Thermal Resistance (Note 2)	2.0	°C/W	
C _J	Typical Junction Capacitance Per Element (Note 3)	250	pF	
T _J	Operating Temperature Range	-55 to +150	°C	
T _{STG}	Storage Temperature Range	-55 to +175	°C	

NOTES: 1. 300us Pulse Width, Duty Cycle 2%.
2. Thermal Resistance Junction To Case.
3. Measured At 1.0MHz And Applied Reverse Voltage Of 4.0V DC.

FEATURES

- * Metal of silicon rectifier, majority carrier conduction
- * Guard ring for transient protection
- * Low power loss, high efficiency
- * High current capability, low V_F
- * High surge capacity
- * For use in low voltage, high frequency inverters, free wheeling, and polarity protection applications
- * RoHS compliant

MECHANICAL DATA

- * Case: TO-220AB molded plastic
- * Polarity: As marked on the body
- * Weight: 2 grams
- * Mounting position: Any



MBR2070CT thru MBR20100CT

High T_{jm} Low IRRM Schottky Barrier Diodes

