

FAST RECOVERY RECTIFIER

VOLTAGE RANGE: 100 --- 1000 V
CURRENT: 2.0 A

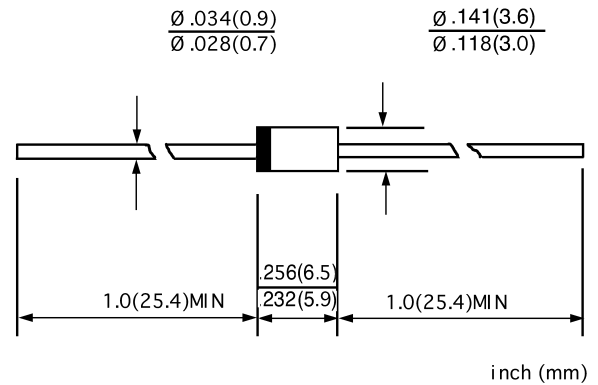
FEATURES

- ◇ Low cost
- ◇ Diffused junction
- ◇ Glass passivated junction
- ◇ Low forward voltage drop
- ◇ High current capability
- ◇ Easily cleaned with Freon, Alcohol, Isopropanol and similar solvents
- ◇ The plastic material carries U/L recognition 94V-0

MECHANICAL DATA

- ◇ Case: JEDEC DO-15, molded plastic
- ◇ Terminals: Axial lead, solderable per MIL-STD-202, Method 208
- ◇ Polarity: Color band denotes cathode
- ◇ Weight: 0.014 ounces, 0.39 grams
- ◇ Mounting position: Any

DO - 15



MAXIMUM RATINGS AND ELECTRICAL CHARACTERISTICS

Ratings at 25°C ambient temperature unless otherwise specified.

Single phase, half wave, 60 Hz, resistive or inductive load. For capacitive load, derate by 20%.

		PG 201	PG 202	PG 203	PG 204	PG 205	PG 206	PG 207	PG 208	UNITS
Maximum recurrent peak reverse voltage	V_{RRM}	100	200	300	400	500	600	800	1000	V
Maximum RMS voltage	V_{RMS}	70	140	210	280	350	420	560	700	V
Maximum DC blocking voltage	V_{DC}	100	200	300	400	500	600	800	1000	V
Maximum average forward rectified current 9.5mm lead length, @ $T_A=75^\circ C$	$I_{F(AV)}$	2.0								A
Peak forward surge current 8.3ms single half-sine-wave superimposed on rated load @ $T_J=125^\circ C$	I_{FSM}	70.0								A
Maximum instantaneous forward voltage @ 2.0 A	V_F	1.3								V
Maximum reverse current @ $T_A=25^\circ C$ at rated DC blocking voltage @ $T_A=125^\circ C$	I_R	5.0 100.0								μA
Maximum reverse recovery time (Note1)	t_{rr}	150			250			500		ns
Typical junction capacitance (Note2)	C_J	18								pF
Typical thermal resistance (Note3)	$R_{\theta JA}$	45								$^\circ C/W$
Operating junction temperature range	T_J	- 55 ---- +175								$^\circ C$
Storage temperature range	T_{STG}	- 55 ---- + 175								$^\circ C$

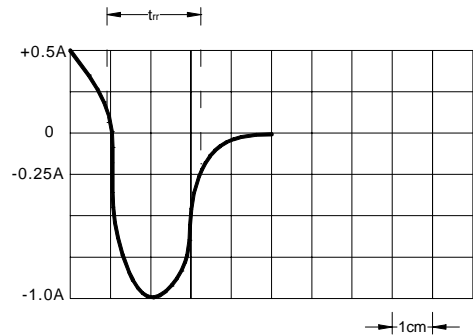
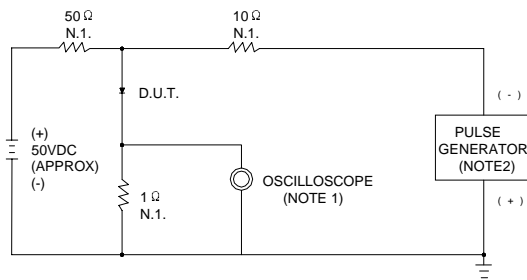
NOTE:1. Measured with $I_F=0.5A$, $I_R=1A$, $I_{rr}=0.25A$.

2. Measured at 1.0MHz and applied reverse voltage of 4.0V DC.

3. Thermal resistance from junction to ambient.

www.galaxycn.com

FIG.1 – REVERSE RECOVERY TIME CHARACTERISTIC AND TEST CIRCUIT DIAGRAM



NOTES: 1. RISE TIME = 75ns MAX. INPUT IMPEDANCE = 1MΩ. 22pF
 2. RISE TIME = 10ns MAX. SOURCE IMPEDANCE = 50Ω

SET TIME BASE FOR 50/100 ns /cm

FIG.2 – FORWARD CURRENT DERATING CURVE

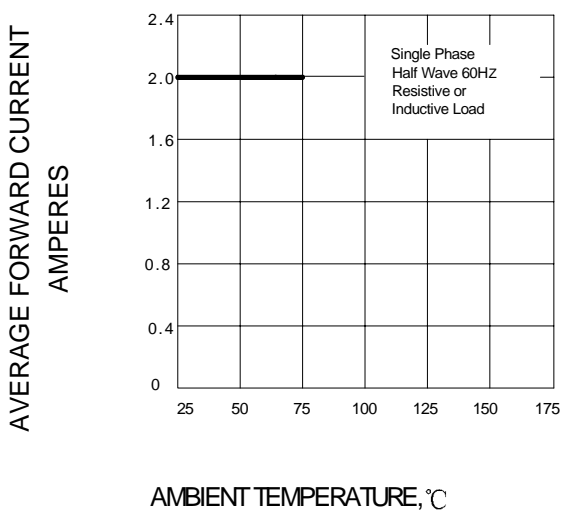


FIG.3 – PEAK FORWARD SURGE CURRENT

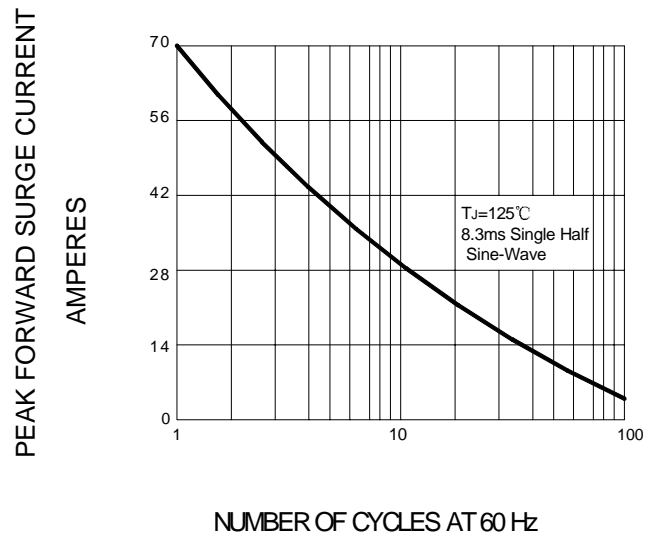


FIG.4 – FORWARD CHARACTERISTICS

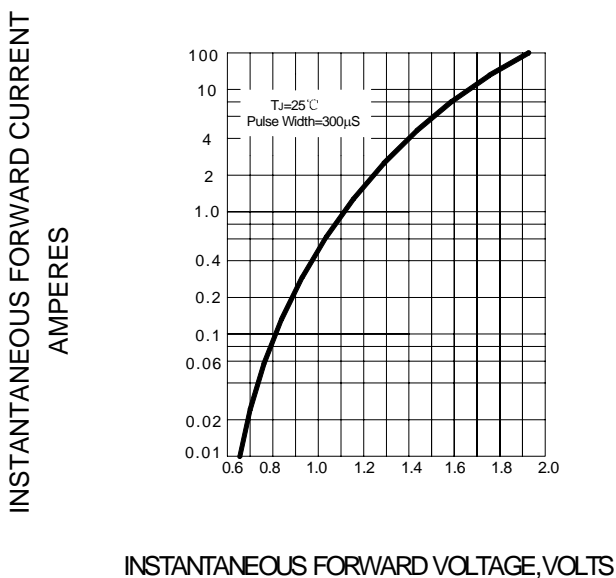


FIG.5 – TYPICAL JUNCTION CAPACITANCE

