



DATA SHEET

SEMICONDUCTOR

RS2A THRU RS2M

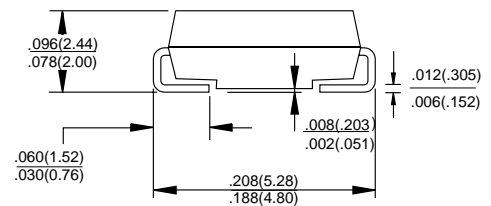
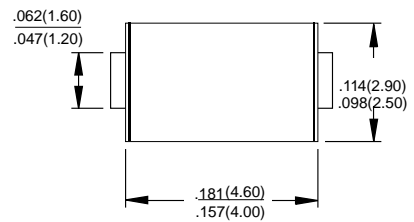
RECTIFIER SPECIALISTS
TECHNICAL SPECIFICATIONS OF SURFACE MOUNT FAST RECOVERY
RECTIFIER
VOLTAGE RANGE - 50 to 1000 Volts CURRENT - 2.0 Ampere



FEATURES

- Ideal for surface mounted applications
- Low leakage current
- Glass passivated junction
- High temperature soldering : 260°C /10 seconds at terminals
- Pb free product at available : 99% Sn above meet RoHS environment substance directive request.

SMA/DO-214AC Unit:inch(mm)



MECHANICAL DATA

- Case: Molded plastic
- Epoxy: UL 94V-0 rate flame retardant
- Terminals: Solder plated, solderable per MIL-STD-750, Method 2026
- Polarity: As marked
- Mounting position: Any

MAXIMUM RATINGS AND ELECTRICAL CHARACTERISTICS

Ratings at 25 °C ambient temperature unless otherwise specified.
 Single phase, half wave, 60 Hz, resistive or inductive load.
 For capacitive load, derate current by 20%.

	SYMBOL	RS2A	RS2B	RS2D	RS2G	RS2J	RS2K	RS2M	UNITS
MARKING CODE		RS2A	RS2B	RS2D	RS2G	RS2J	RS2K	RS2M	
Maximum Recurrent Peak Reverse Voltage	VRRM	50	100	200	400	600	800	1000	Volts
Maximum RMS Voltage	VRMS	35	70	140	280	420	560	700	Volts
Maximum DC Blocking Voltage	VDC	50	100	200	400	600	800	1000	Volts
Maximum Average Forward Rectified Current at TA = 55°C	IO	2.0							Amps
Peak Forward Surge Current 8.3 ms single half sine-wave superimposed on rated load (JEDEC Method)	IFSM	30							Amps
Maximum Forward Voltage at 2.0A DC	VF	1.30							Volts
Maximum DC Reverse Current at	IR	5.0							uAmps
Rated DC Blocking Voltage									
Maximum Reverse Recovery Time (Note 3)	trr	150				250	500	nSec	
Maximum Thermal Resistance (Note 2)	R JL	30							°C/W
Typical Junction Capacitance (Note 1)	CJ	15							pF
Operating and Storage Temperature Range	TJ, TSTG	-55 to +150							°C

- NOTES :1. Measured at 1.0 MHz and applied reverse voltage of 4.0VDC
 2. Thermal Resistance (Junction to Ambient), .24in (6.0mm) 2 copper pads to each terminal.
 3. Test Conditions: IF = 0.5A, IR = 1.0A, IRR = 0.25A

RATING AND CHARACTERISTIC CURVES

RS2A THRU RS2M

FIG. 1 - TYPICAL FORWARD CURRENT DERATING CURVE

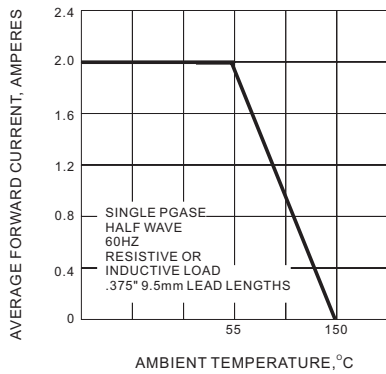


FIG. 2 - MAXIMUM NON-REPETITIVE FORWARD SURGE CURRENT

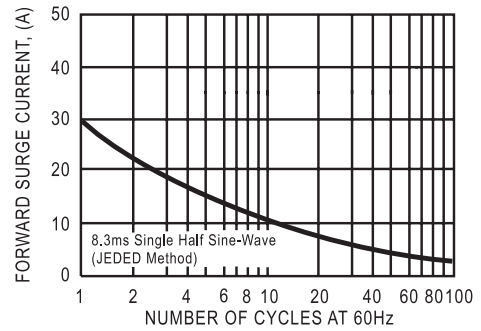


FIG. 3 - TYPICAL REVERSE CHARACTERISTICS

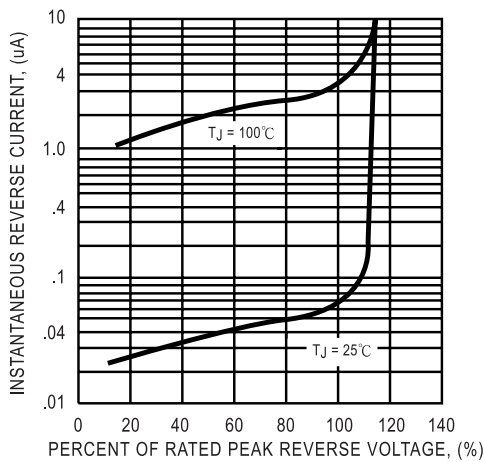


FIG. 4 - TYPICAL INSTANTANEOUS FORWARD CHARACTERISTICS

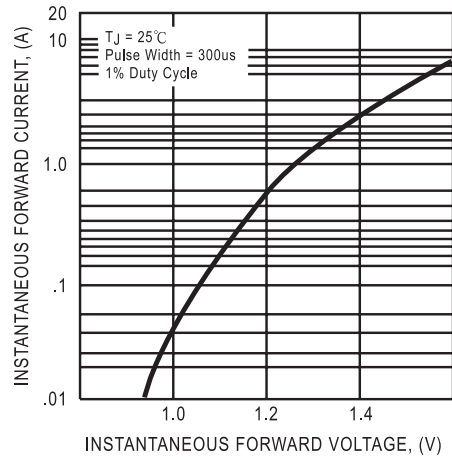
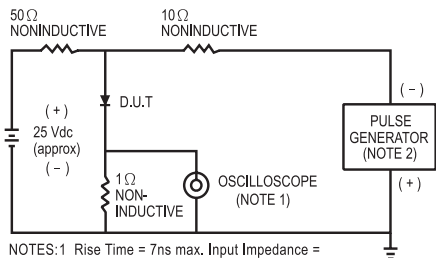


FIG. 5 - TEST CIRCUIT DIAGRAM AND REVERSE RECOVERY TIME CHARACTERISTIC



NOTES: 1 Rise Time = 7ns max. Input Impedance = 1 megohm, 22 pF.
2. Rise Time = 10ns max. Source Impedance = 50 ohms.

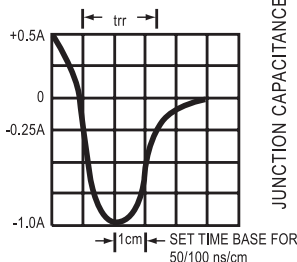


FIG. 6 - TYPICAL JUNCTION CAPACITANCE

