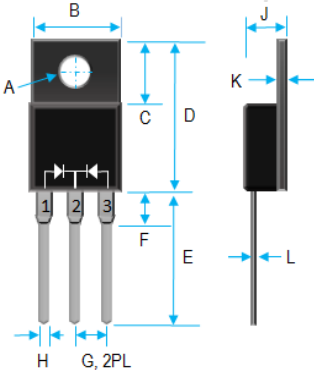


## 10A SUPER FAST RECOVERY RECTIFIER 50V-600V



Dim.	Value Inch[mm]	
	Min.	Max.
A	0.118 [3.0]	0.134 [3.4]
B	0.381 [9.7]	0.406 [10.3]
C	0.248 [6.3]	0.272 [6.9]
D	0.583 [14.8]	0.606 [15.4]
E	0.512 [13.0]	0.548 [13.9]
F	---	0.161 [4.1]
G	0.095 [2.41]	0.105 [2.67]
H	0.019 [0.50]	0.028 [0.7]
J	0.165 [4.2]	0.189 [4.8]
K	0.099 [2.5]	0.130 [3.3]
L	---	0.032 [0.8]

### PRODUCT FEATURES

1. FLAMMABILITY CLASSIFICATION: 94V-0
2. GLASS PASSIVATED CHIP JUNCTION
3. LOW FORWARD VOLTAGE DROP
4. HIGH SURGE CURRENT CAPABILITY
5. LOW LOSSES
6. CASE: TRANSFER MOLDED, ITO-220AB
7. POLARITY: AS MARKED
8. WEIGHT: 1.70 GRAMS
9. LEADS: SOLDERABILITY PER MIL-STD-202 METHOD 208
10. RoHS, SUFFIX "-H" INDICATES HALOGEN FREE PARTS

MAXIMUM RATINGS AND ELECTRICAL CHARACTERISTICS RATINGS AT 25°C AMBIENT TEMPERATURE UNLESS OTHERWISE SPECIFIED STORAGE AND OPERATING TEMPERATURE RANGE -55°C TO +150°C. SINGLE PHASE, HALF WAVE, 60 HZ, RESISTIVE OR INDUCTIVE LOAD. FOR CAPACITIVE LOAD, DERATE CURRENT BY 20%.

RATINGS	SYMBOL	VALUE	UNITS
MAXIMUM AVERAGE FORWARD RECTIFIED CURRENT	$I_o$	10	A
PEAK FWD SURGE CURRENT, 8.3ms HALF SINE-WAVE SUPERIMPOSED ON RATED LOAD	$I_{FSM}$	100	A
TYPICAL THERMAL RESISTANCE (NOTE 1)	$R_{\theta jc}$	3	°C/W
MAXIMUM REVERSE CURRENT @ 25°C	$I_R$	5	µA
MAXIMUM REVERSE CURRENT @ 125°C	$I_R$	250	µA
MAXIMUM REVERSE RECOVERY TIME	$T_{RR}$	35	nS

1. THERMAL RESISTANCE JUNCTION TO CASE PER LEG MOUNTED ON HEAT SINK
2. REVERSE RECOVERY TEST CONDITIONS:  $I_F=0.5A$ ,  $I_R=1.0A$ ,  $I_{RR}=0.25A$
3. MAXIMUM FORWARD VOLTAGE @  $I_o$  DC

PART NUMBER	MAX RECURRENT PK REV VOLTAGE $V_{RRM}$ (V)	MAX RMS VOLTAGE $V_{RMS}$ (V)	MAX DC BLOCKING VOLTAGE $V_{DC}$ (V)	MAX FWD VOLTAGE $V_F$ (V)	MARKING
SF1005FCT	50	35	50	0.98	SF1005FCT
SF1010FCT	100	70	100	0.98	SF1010FCT
SF1020FCT	200	140	200	0.98	SF1020FCT
SF1040FCT	400	280	400	1.3	SF1040FCT
SF1060FCT	600	420	600	1.7	SF1060FCT

## RATING AND CHARACTERISTIC CURVES

FIG.1-TYPICAL FORWARD CURRENT DERATING CURVE

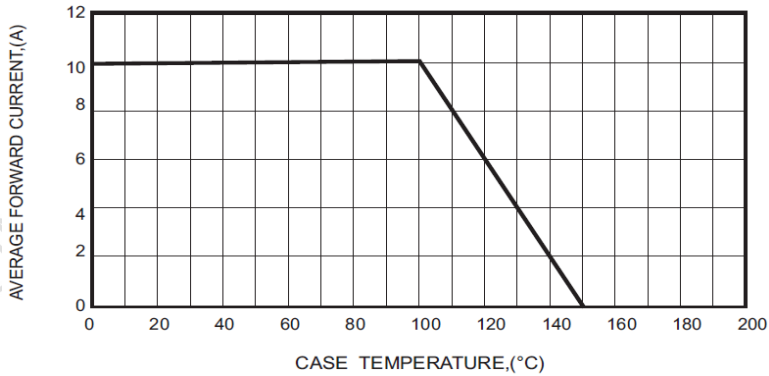


FIG.3-MAXIMUM NON-REPETITIVE FORWARD SURGE CURRENT

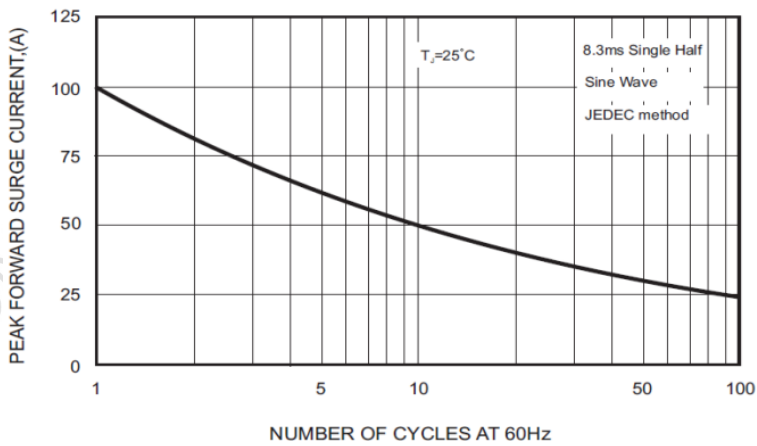
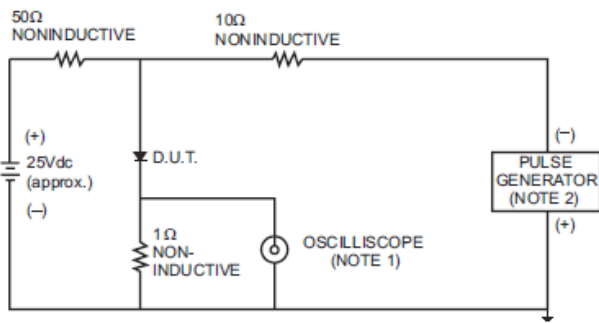


FIG.5- TEST CIRCUIT DIAGRAM AND REVERSE RECOVERY TIME CHARACTERISTICS



NOTES: 1. Rise Time= 7ns max., Input Impedance= 1 megohm,22pF.  
2. Rise Time= 10ns max., Source Impedance= 50 ohms.

FIG.2-TYPICAL FORWARD CHARACTERISTICS

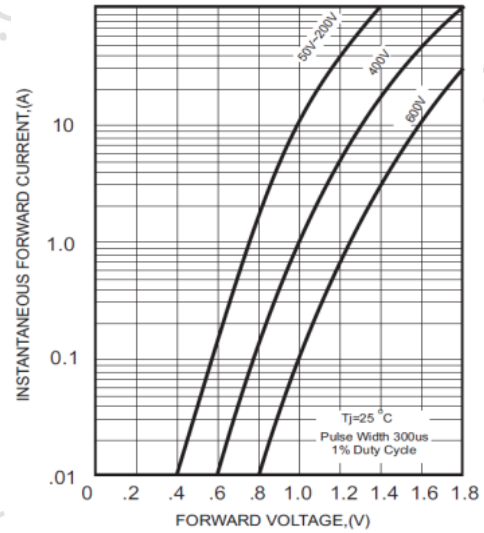


FIG.4 - TYPICAL REVERSE CHARACTERISTICS

