

**SUPER FAST
GLASS PASSIVATED RECTIFIERS**

REVERSE VOLTAGE - **100 to 600** Volts
FORWARD CURRENT - **1.0** Ampere

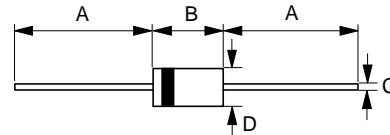
FEATURES

- Glass passivated chip
- Super fast switching time for high efficiency
- Low forward voltage drop and high current capability
- Low reverse leakage current
- Plastic material has UL flammability classification 94V-0

MECHANICAL DATA

- Case : JEDEC DO-41 molded plastic
- Polarity : Color band denotes cathode
- Weight : 0.012 ounces, 0.34 grams
- Mounting position : Any

DO-41



DO-41		
Dim.	Min.	Max.
A	25.4	-
B	4.10	5.20
C	0.71 \varnothing	0.86 \varnothing
D	2.00 \varnothing	2.70 \varnothing
All Dimensions in millimeter		

MAXIMUM RATINGS AND ELECTRICAL CHARACTERISTICS

Ratings at 25°C ambient temperature unless otherwise specified.
Single phase, half wave, 60Hz, resistive or inductive load.
For capacitive load, derate current by 20%

CHARACTERISTICS	SYMBOL	SF10BG	SF10DG	SF10FG	SF10GG	SF10HG	SF10JG	UNIT
Maximum Recurrent Peak Reverse Voltage	VRRM	100	200	300	400	500	600	V
Maximum RMS Voltage	VRMS	70	140	210	280	350	420	V
Maximum DC Blocking Voltage	VDC	100	200	300	400	500	600	V
Maximum Average Forward Rectified Current @TA=75°C	I(AV)	1.0						A
Peak Forward Surge Current 8.3ms single half sine-wave super imposed on rated load (JEDEC Method)	IFSM	30						A
Maximum forward Voltage at 1.0A DC	VF	0.95		1.25		1.3		V
Maximum DC Reverse Current at Rated DC Blocking Voltage @TJ=25°C @TJ=100°C	IR	5 100						uA
Typical Junction Capacitance (Note1)	CJ	30				25		pF
Typical Thermal Resistance (Note 2)	RθJA	40						°C/W
Maximum Reverse Recovery Time (Note 3)	TRR	35		40		50		ns
Operating Temperature Range	TJ	-55 to +150						°C
Storage Temperature Range	TSTG	-55 to +150						°C

NOTES : 1.Measured at 1.0MHz and applied reverse voltage of 4.0V DC.
2.Thermal Resistance Junction to Ambient.
3.Measured with IF=0.5A,IR=1.0A,IRR=0.25A.

