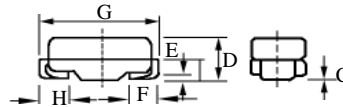
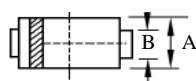


## SS12 – SS16

 1A 片式肖特基二极管  
 1A SCHOTTKY SMA DIODES

型号 TYPE	印字 Marking	反向重复 峰值电压 $V_{RRM}(V)$	正向 平均电流 $I_F(A)$	正向 峰值电压 $V_F(V)$	反向 峰值电流 $I_{RM}(\mu A)$	正向 浪涌电流 $I_{FSM}(A)$	反向 恢复时间 $T_{rr}(ns)$	外形尺寸 Package Dimensions
SS12	S12	20	1.0	0.50	1000	30	—	DO – 214AC
SS13	S13	30		0.50				
SS14	S14	40		0.50				
SS15	S15	50		0.70				
SS16	S16	60		0.70				



A	B	C	D	E	F	G	H
$\frac{.110(2.8)}{.086(2.2)}$	$\frac{.067(1.7)}{.051(1.3)}$	$\frac{.008}{(.2)} \text{ MAX}$	$\frac{.091(2.3)}{.067(1.7)}$	$\frac{.051(1.3)}{.008(0.2)}$	$\frac{.059(1.5)}{.035(0.9)}$	$\frac{.209(5.3)}{.185(4.7)}$	$\frac{.059(1.5)}{.035(0.9)}$

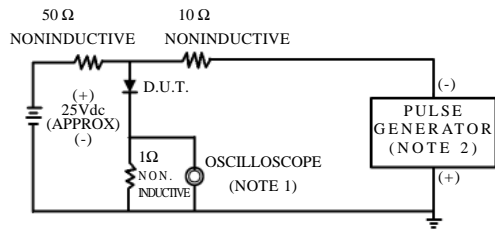
DO – 214AC

SS12 – SS16

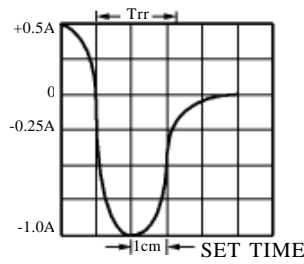
1A 片式肖特基二极管额定值与特性曲线

RATING & CHARACTERISTIC CURVES OF 1A SCHOTTKY SMA DIODES

FIG.1-TEST CIRCUIT DIAGRAM AND REVERSE RECOVERY TIME CHARACTERISTIC



NOTES:1.Rise Time=7ns max.  
Input Impedance=1megohm.22pF.  
2.Rise Time=10ns max.  
Source Impedance=50 ohms.



BASE FOR 10 ns/cm

FIG. 2 - TYPICAL FORWARD CURRENT DERATING CURVE

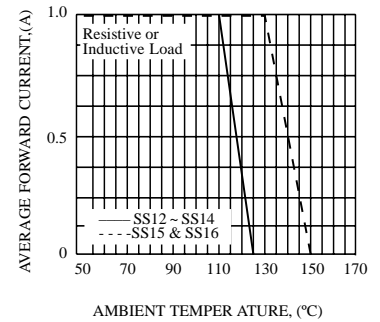


FIG. 3 - TYPICAL REVERSE CHARACTERISTICS

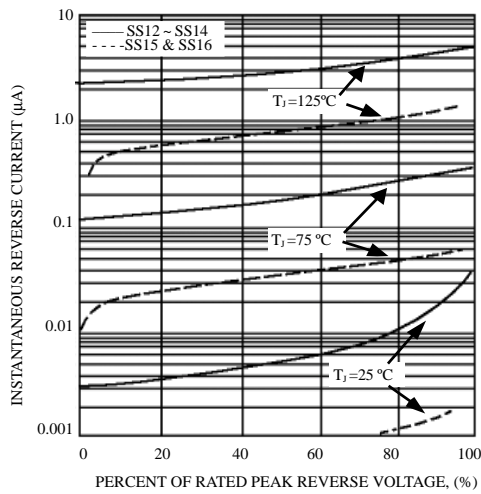


FIG. 4 - TYPICAL INSTANTANEOUS FORWARD CHARACTERISTICS

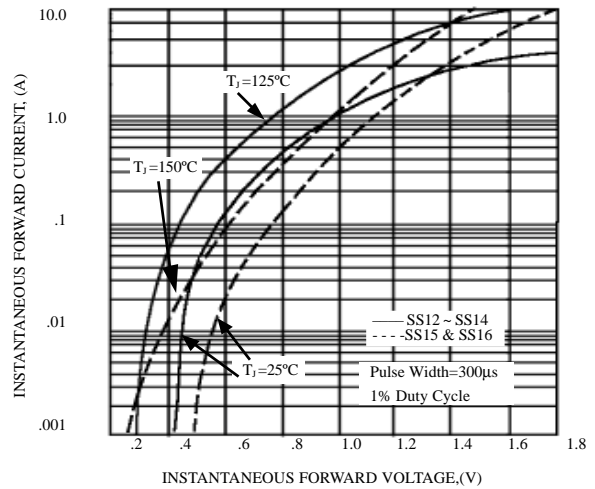


FIG. 5 - MAXIMUM NON-REPETITIVE FOWARD SURGE CURRENT

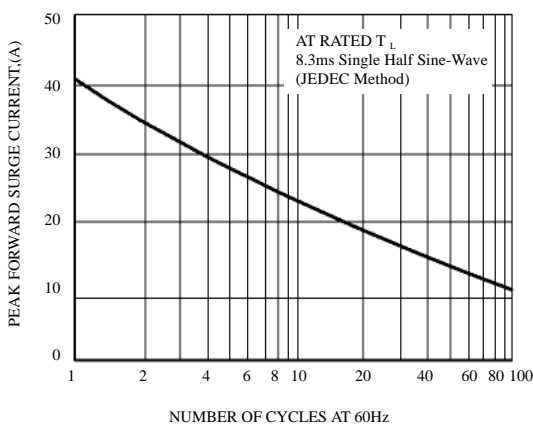


FIG. 6 - TYPICAL JUNCTION CAPACITANCE

