

# DIGITRON SEMICONDUCTORS

UTR10-UTR60, UTR01-UTR61, UTR02-UTR62

FAST RECOVERY RECTIFIERS

## MAXIMUM RATINGS

Characteristic	½ amp series	1 amp series	2 amp series
Maximum average DC output current @ T <sub>A</sub> = 25°C @ T <sub>A</sub> = 100°C	0.5A 0.25A	1.0A 0.5A	2.0A 1.0A
Non-repetitive sinusoidal Surge current (8.3ms)	15A	20A	25A
Operating temperature range	-195 to +175°C		
Storage temperature range	-195 to +200°C		

## ELECTRICAL CHARACTERISTICS (@25°C unless otherwise noted)

Part number	Peak inverse voltage	Maximum forward voltage drop	Maximum leakage current @ PIV		Maximum reverse recovery time *	Maximum junction capacitance @ 25°C	
			25°C	100°C		0V	-10V
UTR02	50V	1.1V @ 1000mA	3µA	100µA	250ns	150pf	60pF
UTR12	100V					100pf	40pF
UTR22	200V					80pf	32pF
UTR32	300V				300ns	70pf	28pF
UTR42	400V						
UTR52	500V				400ns	50pf	20pF
UTR62	600V						
UTR01	50V	1.1V @ 500mA	3µA	100µA	250ns	150pf	60pF
UTR11	100V					100pf	40pF
UTR21	200V					80pf	32pF
UTR31	300V				300ns	70pf	28pF
UTR41	400V						
UTR51	500V				400ns	50pf	20pF
UTR61	600V						
UTR10	100V	1.1V @ 200mA	3µA	100µA	250ns	100pf	40pF
UTR20	200V					80pf	32pF
UTR30	300V				300ns	70pf	28pF
UTR40	400V						
UTR50	500V				400ns	50pf	20pF
UTR60	600V						

Available Non-RoHS (standard) or RoHS compliant (add PBF suffix).

Available as "HR" (high reliability) screened per MIL-PRF-19500, JANTX level. Add "HR" suffix to base part number.

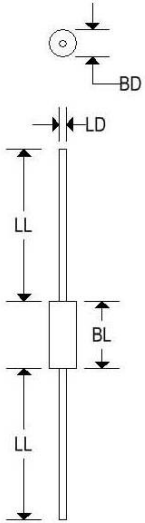
# DIGITRON SEMICONDUCTORS

UTR10-UTR60, UTR01-UTR61, UTR02-UTR62

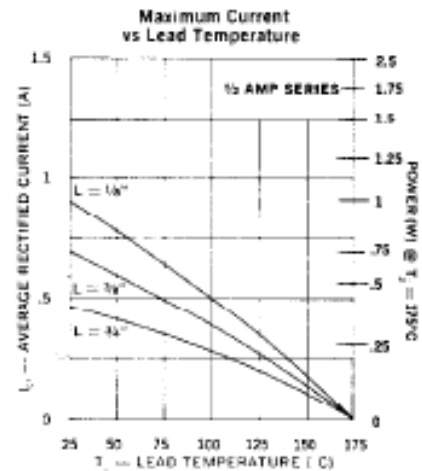
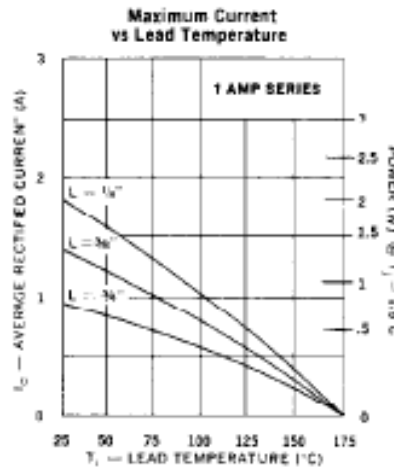
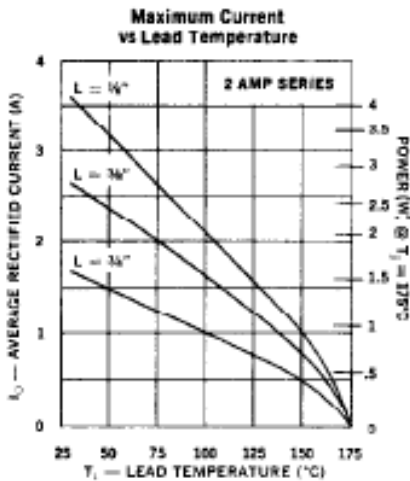
FAST RECOVERY RECTIFIERS

## MECHANICAL CHARACTERISTICS

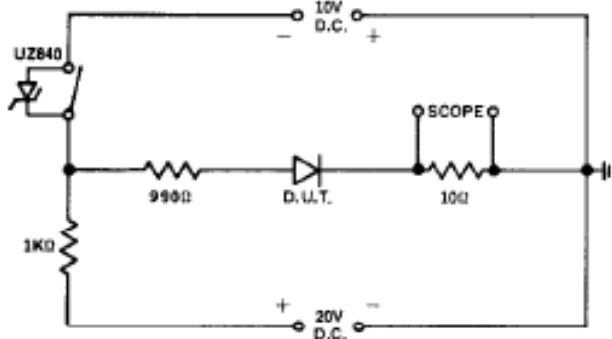
Case	Digi A
Marking	Body painted, alpha-numeric
Polarity	Cathode band



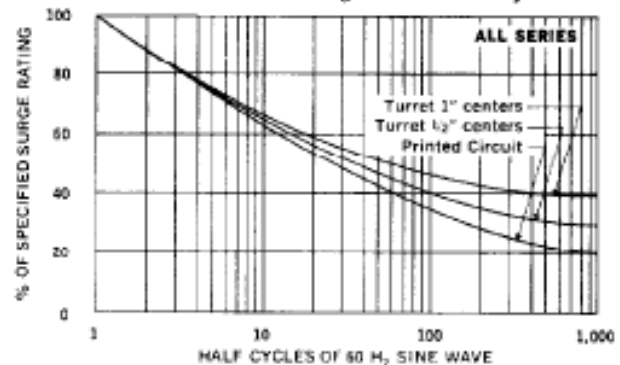
	Digi A			
	Inches		Millimeters	
	Min	Max	Min	Max
BD	-	0.095	-	2.413
BL	-	0.180	-	4.572
LD	0.028	0.032	0.711	0.813
LL	0.700	-	17.800	-



Reverse-Recovery Circuit



Allowable Forward Surge vs Number of Cycles



# DIGITRON SEMICONDUCTORS

UTR10-UTR60, UTR01-UTR61, UTR02-UTR62      FAST RECOVERY RECTIFIERS

