

**HIGH POWER AIRCRAFT/ VEHICLE DC BUS VOLTAGE SUPPRESSOR**
**APPLICATIONS**

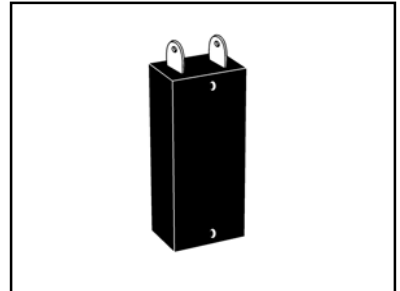
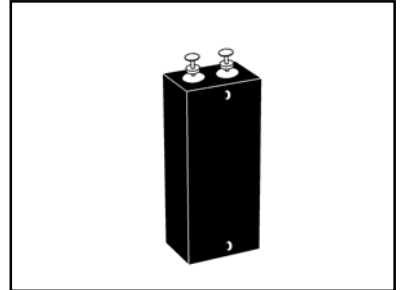
- ✓ DC Power Supply Protection
- ✓ MIL-STD-704 Power Bus Protection

**IEC COMPATIBILITY (EN61000-4)**

- ✓ *Meets the Following Military Specifications:*
  - MIL-STD-704
  - MIL-PRF-19500
- ✓ 15 kilowatts Peak Pulse Power per Line (tp=10/1000µs)
- ✓ Each Device 100% Tested
- ✓ 28 Volt Power Supply Protection

**MECHANICAL CHARACTERISTICS**

- ✓ Molded Plastic Case
- ✓ Weight 38 grams: 704-15K36 & 65 grams: 704-15K36T (Approximate)
- ✓ Flammability Rating UL 94V-0
- ✓ Device Marking: Logo, Date Code & Part Number
- ✓ Positive Terminal Indicated By Polarity Dot
- ✓ Screening for Military Requirements IAW MIL-PRF-19500 is Available
- ✓ Screening Available Upon Request - The 704 series can be screened upon request for military requirements in accordance with MIL-PRF-19500 (applicable test). Standard screening is available based on the following options:
  - H1 - Submodule Screening per test plans 05231 & 05232
  - H2 - Submodule & Module Screening per test plan 05233
  - H3 - Submodule & Module Screening, Module Group B & C Lot Testing per test plans 05234 & 05235


**704-15K36**

**704-15K36T**
**MAXIMUM RATINGS @ 25°C Unless Otherwise Specified**

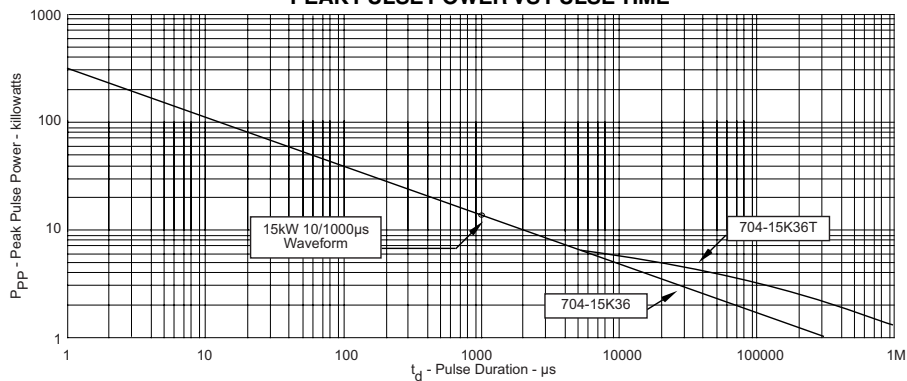
PARAMETER	SYMBOL	VALUE	UNITS
Peak Pulse Power (tp = 10/1000µs) - See Fig. 1	$P_{PP}$	15	kilowatts
Operating Temperature	$T_L$	-55 to 150	°C
Storage Temperature	$T_{STG}$	-55 to 150	°C
Steady State Power Dissipation @ 50°C	$T_A$	10.0	Watts
Forward Surge Rating @ 25°C 1/120 seconds	$F_I$	300	Amps

# 704-15K36 thru 704-15K36T

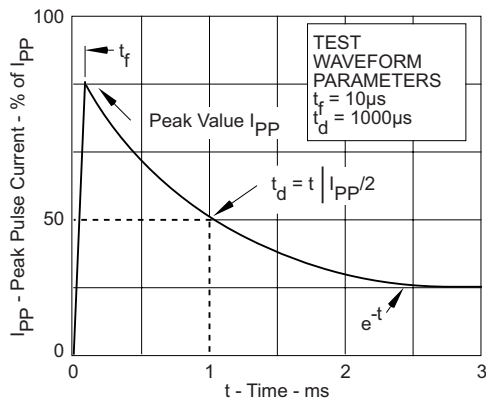
## DEVICE CHARACTERISTICS

ELECTRICAL CHARACTERISTICS PER LINE @ 25°C Unless Otherwise Specified						
PART NUMBER	RATED STAND-OFF VOLTAGE	MINIMUM BREAKDOWN VOLTAGE	MAXIMUM CLAMPING VOLTAGE (See Fig. 2)	MAXIMUM LEAKAGE CURRENT	MAXIMUM PEAK PULSE CURRENT (See Fig. 2)	MAXIMUM FORWARD VOLTAGE
	$V_{WM}$ VOLTS	@10mA $V_{(BR)}$ VOLTS	@ $I_{PPM}$ $V_C$ VOLTS	@ $V_{WM}$ $I_b$ $\mu A$	$I_{PPM}$ AMPS	@100A, 8.3ms $V_F$ VOLTS DC
704-15K36	31.5	36	53	100	300	3.0
704-15K36T	31.5	36	53	500	300	15.0

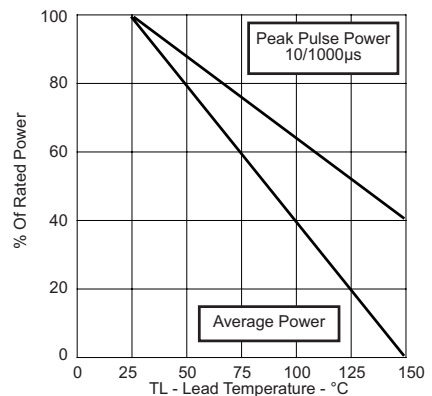
**FIGURE 1  
PEAK PULSE POWER VS PULSE TIME**



**FIGURE 2  
PULSE WAVE FORM**



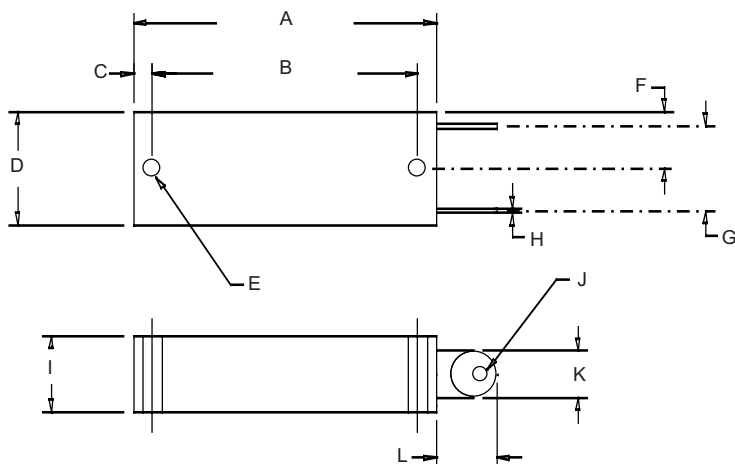
**FIGURE 3  
POWER DERATING CURVE**



# 704-15K36 thru 704-15K36T

## PACKAGE OUTLINE & DIMENSIONS

704-15K36 PACKAGE OUTLINE



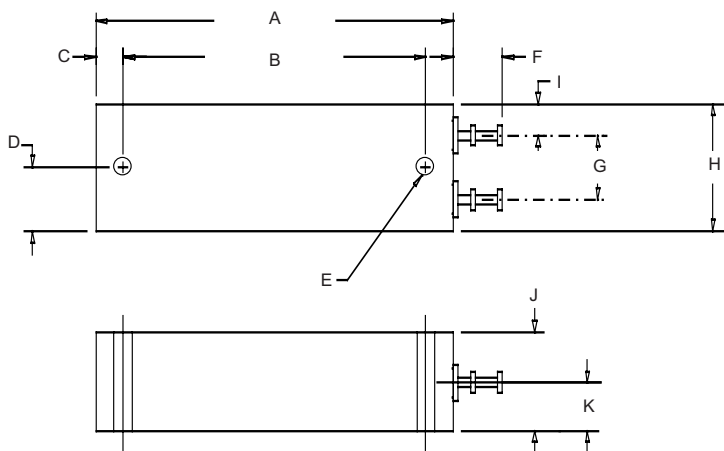
704-15K36



DIMENSIONS

DIM	MILLIMETERS		INCHES	
	MIN	MAX	MIN	MAX
A	49.28	51.56	1.97	2.03
B	43.92	44.96	1.73	1.77
C	2.79	3.56	0.110	0.140
D	18.29	19.81	0.72	0.78
E*	3.18 DIA	3.18 DIA	0.125 DIA	0.125 DIA
F	8.76	10.29	0.345	0.405
G	13.51	15.04	0.532	0.592
H*	0.66	0.71	0.026	0.028
I	11.94	13.46	0.47	0.53
J	2.41	2.92	0.095	0.115
K	7.70	8.20	0.303	0.323
L	9.40	10.92	0.37	0.43

704-15K36T PACKAGE OUTLINE



704-15K36T



DIMENSIONS

DIM	MILLIMETERS		INCHES	
	MIN	MAX	MIN	MAX
A	62.74	64.26	2.47	2.53
B	53.34	54.48	2.10	2.145
C	4.32	5.33	0.17	0.21
D	10.54	12.07	0.415	0.475
E*	3.18 DIA	3.18 DIA	0.125 DIA	0.125 DIA
F	8.26	9.27	0.325	0.365
G*	11.43	11.43	0.450	0.450
H	21.84	23.37	0.86	0.92
I*	5.59	5.59	0.220	0.220
J	16.51	17.53	0.65	0.69
K*	8.51	8.51	0.335	0.335

Note\*: Dimensions are nominal

Outline & Dimensions: Rev 1 - 4/04, 06035

COPYRIGHT © ProTek Devices 2007

SPECIFICATIONS: ProTek reserves the right to change the electrical and or mechanical characteristics described herein without notice (except JEDEC).

DESIGN CHANGES: ProTek reserves the right to discontinue product lines without notice, and that the final judgement concerning selection and specifications is the buyer's and that in furnishing engineering and technical assistance, ProTek assumes no responsibility with respect to the selection or specifications of such products.

**ProTek Devices**

2929 South Fair Lane, Tempe, AZ 85282

Tel: 602-431-8101 Fax: 602-431-2288

E-Mail: [sales@protekdevices.com](mailto:sales@protekdevices.com)

Web Site: [www.protekdevices.com](http://www.protekdevices.com)