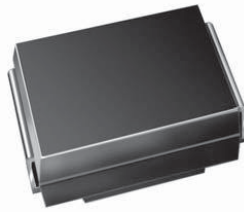


Surface Mount PAR[®] Transient Voltage Suppressors

High Temperature Stability and High Reliability Conditions



DO-214AA (SMB)

PRIMARY CHARACTERISTICS	
V_{BR}	6.8 V to 43 V
P_{PPM}	600 W
I_{FSM}	75 A
T_J max.	185 °C

TYPICAL APPLICATIONS

Use in sensitive electronics protection against voltage transients induced by inductive load switching and lighting on ICs, MOSFET, signal lines of sensor units for consumer, computer, industrial, automotive and telecommunication.

FEATURES

- Junction passivation optimized design passivated anisotropic rectifier technology
- $T_J = 185$ °C capability suitable for high reliability and automotive requirement
- Available in uni-directional polarity only
- 600 W peak pulse power capability with a 10/1000 μ s waveform, repetitive rate (duty cycle): 0.01 %
- Excellent clamping capability
- Very fast response time
- Low incremental surge resistance
- Meets MSL level 1, per J-STD-020, LF maximum peak of 260 °C
- AEC-Q101 qualified
- Compliant to RoHS Directive 2002/95/EC and in accordance to WEEE 2002/96/EC



MECHANICAL DATA

Case: DO-214AA (SMB)

Molding compound meets UL 94 V-0 flammability rating

Base P/NHE3 - RoHS compliant, AEC-Q101 qualified

Terminals: Matte tin plated leads, solderable per J-STD-002 and JESD 22-B102

HE3 suffix meets JESD 201 class 2 whisker test

Polarity: Color band denotes cathode end

MAXIMUM RATINGS ($T_A = 25$ °C unless otherwise noted)			
PARAMETER	SYMBOL	VALUE	UNIT
Peak pulse power dissipation with a 10/1000 μ s waveform ⁽¹⁾⁽²⁾ (fig. 1)	P_{PPM}	600	W
Peak pulse current with a 10/1000 μ s waveform ⁽¹⁾ (fig. 3)	I_{PPM}	See next table	A
Peak forward surge current 8.3 ms single half sine-wave ⁽²⁾⁽³⁾	I_{FSM}	75	A
Instantaneous forward voltage at 50 A ⁽³⁾	V_F	3.5	V
Operating junction and storage temperature range	T_J, T_{STG}	- 65 to + 185	°C

Notes

⁽¹⁾ Non-repetitive current pulse, per fig. 3 and derated above $T_A = 25$ °C per fig. 2

⁽²⁾ Mounted on 0.2" x 0.2" (5.0 mm x 5.0 mm) land areas per figure

⁽³⁾ Mounted on 8.3 ms single half sine-wave duty cycle = 4 pulses per minute maximum

ELECTRICAL CHARACTERISTICS ($T_A = 25\text{ }^\circ\text{C}$ unless otherwise noted)									
DEVICE	DEVICE MARKING CODE	BREAKDOWN VOLTAGE $V_{BR}^{(1)}$ AT I_T (V)		TEST CURRENT I_T (mA)	STAND-OFF VOLTAGE V_{WM} (V)	MAXIMUM REVERSE LEAKAGE AT V_{WM} I_D (μA)	$T_J = 150\text{ }^\circ\text{C}$	MAXIMUM PEAK PULSE SURGE CURRENT $I_{PPM}^{(2)}$ (A)	MAXIMUM CLAMPING VOLTAGE AT I_{PPM} V_C (V)
		MIN.	MAX.				MAXIMUM REVERSE LEAKAGE AT V_{WM} I_D (μA)		
TPSMB6.8	KDP	6.12	7.48	10	5.50	500	1000	55.6	10.8
TPSMB6.8A	KEP	6.45	7.14	10	5.80	500	1000	57.1	10.5
TPSMB7.5	KFP	6.75	8.25	10	6.05	250	500	51.3	11.7
TPSMB7.5A	KGP	7.13	7.88	10	6.40	250	500	53.1	11.3
TPSMB8.2	KHP	7.38	9.02	10	6.63	100	200	48.0	12.5
TPSMB8.2A	KKP	7.79	8.61	10	7.02	100	200	49.6	12.1
TPSMB9.1	KLP	8.19	10.0	1.0	7.37	25.0	50.0	43.5	13.8
TPSMB9.1A	KMP	8.65	9.55	1.0	7.78	25.0	50.0	44.8	13.4
TPSMB10	KNP	9.00	11.0	1.0	8.10	5.0	20.0	40.0	15.0
TPSMB10A	KPP	9.50	10.5	1.0	8.55	5.0	20.0	41.4	14.5
TPSMB11	KQP	9.90	12.1	1.0	8.92	2.0	5.0	37.0	16.2
TPSMB11A	KRP	10.5	11.6	1.0	9.40	2.0	5.0	38.5	15.6
TPSMB12	KSP	10.8	13.2	1.0	9.72	2.0	5.0	34.7	17.3
TPSMB12A	KTP	11.4	12.6	1.0	10.2	2.0	5.0	35.9	16.7
TPSMB13	KUP	11.7	14.3	1.0	10.5	2.0	5.0	31.6	19.0
TPSMB13A	KVP	12.4	13.7	1.0	11.1	2.0	5.0	33.0	18.2
TPSMB15	KWP	13.5	16.5	1.0	12.1	1.0	5.0	27.3	22.0
TPSMB15A	KXP	14.3	15.8	1.0	12.8	1.0	5.0	28.3	21.2
TPSMB16	KYP	14.4	17.6	1.0	12.9	1.0	5.0	25.5	23.5
TPSMB16A	KZP	15.2	16.8	1.0	13.6	1.0	5.0	26.7	22.5
TPSMB18	LDP	16.2	19.8	1.0	14.5	1.0	5.0	22.6	26.5
TPSMB18A	LEP	17.1	18.9	1.0	15.3	1.0	5.0	23.8	25.2
TPSMB20	LFP	18.0	22.0	1.0	16.2	1.0	5.0	20.6	29.1
TPSMB20A	LGP	19.0	21.0	1.0	17.1	1.0	5.0	21.7	27.7
TPSMB22	LHP	19.8	24.2	1.0	17.8	1.0	5.0	18.8	31.9
TPSMB22A	LKP	20.9	23.1	1.0	18.8	1.0	5.0	19.6	30.6
TPSMB24	LLP	21.6	26.4	1.0	19.4	1.0	5.0	17.3	34.7
TPSMB24A	LMP	22.8	25.2	1.0	20.5	1.0	5.0	18.1	33.2
TPSMB27	LNP	24.3	29.7	1.0	21.8	1.0	5.0	15.3	39.1
TPSMB27A	LPP	25.7	28.4	1.0	23.1	1.0	5.0	16.0	37.5
TPSMB30	LQP	27.0	33.0	1.0	24.3	1.0	5.0	13.8	43.5
TPSMB30A	LRP	28.5	31.5	1.0	25.6	1.0	5.0	14.5	41.4
TPSMB33	LSP	29.7	36.3	1.0	26.8	1.0	5.0	12.6	47.7
TPSMB33A	LTP	31.4	34.7	1.0	28.2	1.0	5.0	13.1	45.7
TPSMB36	LUP	32.4	39.6	1.0	29.1	1.0	5.0	11.5	52.0
TPSMB36A	LVP	34.2	37.8	1.0	30.8	1.0	5.0	12.0	49.9
TPSMB39	LWP	35.1	42.9	1.0	31.6	1.0	5.0	10.6	56.4
TPSMB39A	LXP	37.1	41.0	1.0	33.3	1.0	5.0	11.1	53.9
TPSMB43	LYP	38.7	47.3	1.0	34.8	1.0	5.0	9.70	61.9
TPSMB43A	LZP	40.9	45.2	1.0	36.8	1.0	5.0	10.1	59.3

Notes

(1) V_{BR} measured after I_T applied for 300 μs , I_T = square wave pulse or equivalent

(2) Surge current waveform per fig. 3 and derated per fig. 2

(3) All terms and symbols are consistent with ANSI/IEEE C62.35

ORDERING INFORMATION (Example)				
PREFERRED P/N	UNIT WEIGHT (g)	PREFERRED PACKAGE CODE	BASE QUANTITY	DELIVERY MODE
TPSMB6.8AHE3/52T ⁽¹⁾	0.096	52T	750	7" diameter plastic tape and reel
TPSMB6.8AHE3/5BT ⁽¹⁾	0.096	5BT	3200	13" diameter plastic tape and reel

Note

⁽¹⁾ AEC-Q101 qualified

RATINGS AND CHARACTERISTICS CURVES

($T_A = 25\text{ }^\circ\text{C}$ unless otherwise noted)

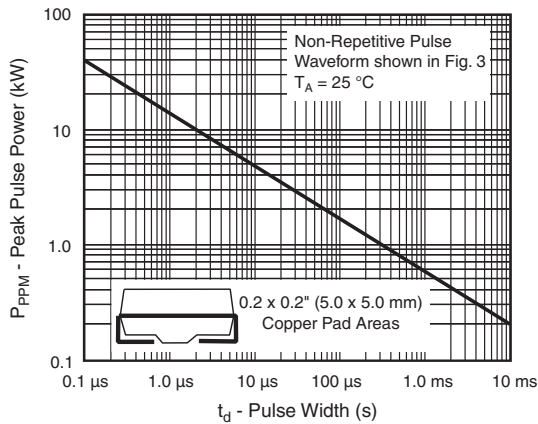


Figure 1. Peak Pulse Power Rating Curve

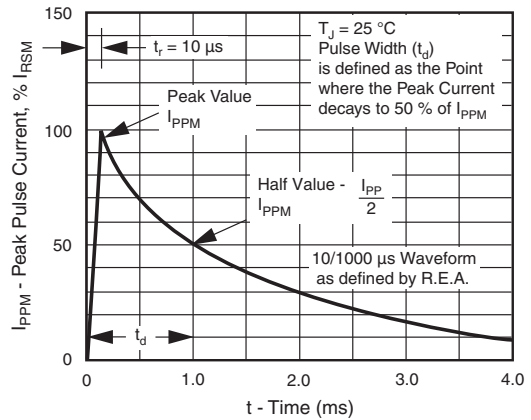


Figure 3. Pulse Waveform

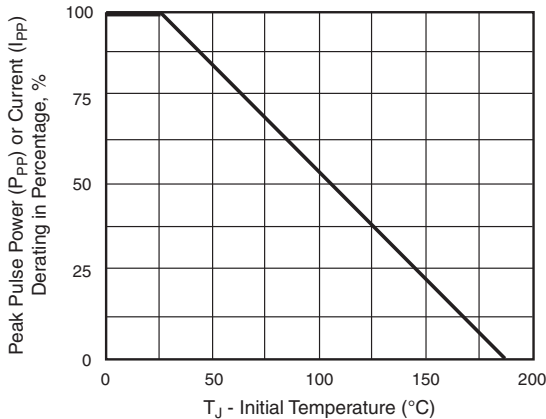


Figure 2. Pulse Power or Current vs. Initial Junction Temperature

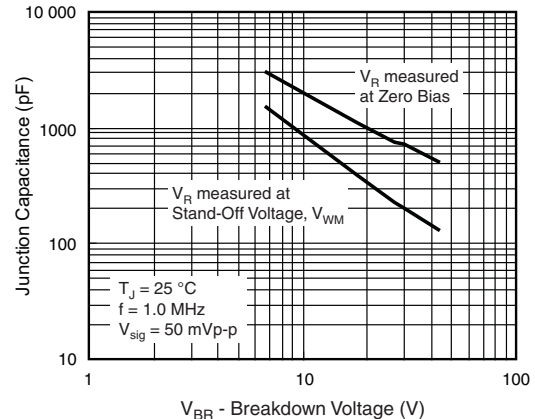


Figure 4. Typical Junction Capacitance

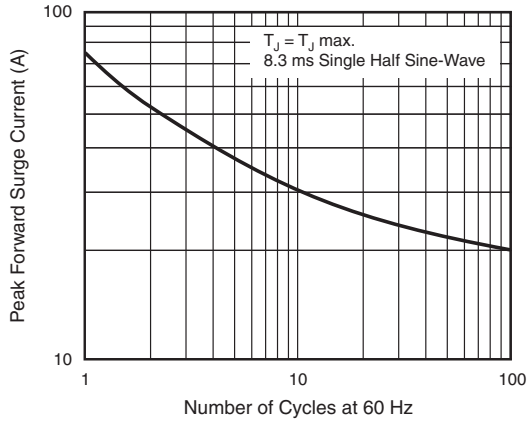
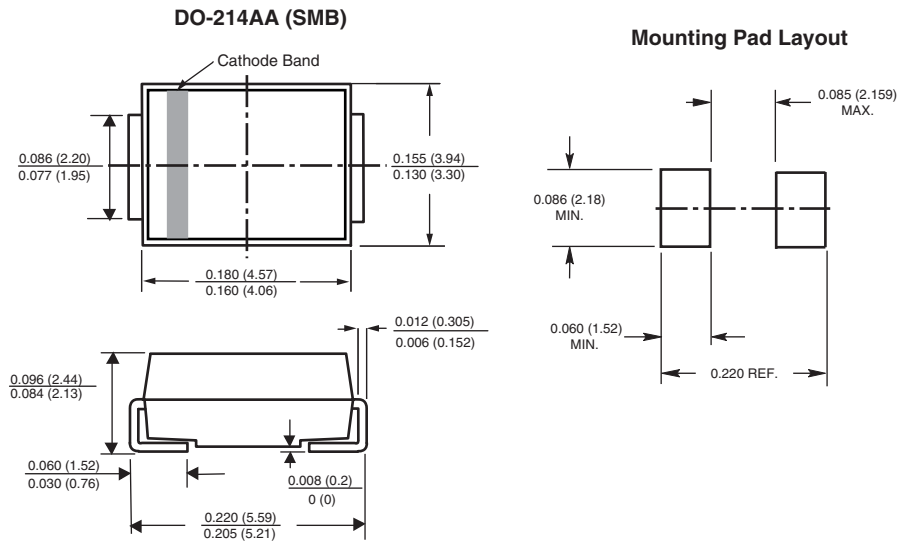


Figure 5. Maximum Non-Repetitive Peak Forward Surge Current

PACKAGE OUTLINE DIMENSIONS in inches (millimeters)





Disclaimer

ALL PRODUCT, PRODUCT SPECIFICATIONS AND DATA ARE SUBJECT TO CHANGE WITHOUT NOTICE TO IMPROVE RELIABILITY, FUNCTION OR DESIGN OR OTHERWISE.

Vishay Intertechnology, Inc., its affiliates, agents, and employees, and all persons acting on its or their behalf (collectively, "Vishay"), disclaim any and all liability for any errors, inaccuracies or incompleteness contained in any datasheet or in any other disclosure relating to any product.

Vishay makes no warranty, representation or guarantee regarding the suitability of the products for any particular purpose or the continuing production of any product. To the maximum extent permitted by applicable law, Vishay disclaims (i) any and all liability arising out of the application or use of any product, (ii) any and all liability, including without limitation special, consequential or incidental damages, and (iii) any and all implied warranties, including warranties of fitness for particular purpose, non-infringement and merchantability.

Statements regarding the suitability of products for certain types of applications are based on Vishay's knowledge of typical requirements that are often placed on Vishay products in generic applications. Such statements are not binding statements about the suitability of products for a particular application. It is the customer's responsibility to validate that a particular product with the properties described in the product specification is suitable for use in a particular application. Parameters provided in datasheets and/or specifications may vary in different applications and performance may vary over time. All operating parameters, including typical parameters, must be validated for each customer application by the customer's technical experts. Product specifications do not expand or otherwise modify Vishay's terms and conditions of purchase, including but not limited to the warranty expressed therein.

Except as expressly indicated in writing, Vishay products are not designed for use in medical, life-saving, or life-sustaining applications or for any other application in which the failure of the Vishay product could result in personal injury or death. Customers using or selling Vishay products not expressly indicated for use in such applications do so at their own risk and agree to fully indemnify and hold Vishay and its distributors harmless from and against any and all claims, liabilities, expenses and damages arising or resulting in connection with such use or sale, including attorneys fees, even if such claim alleges that Vishay or its distributor was negligent regarding the design or manufacture of the part. Please contact authorized Vishay personnel to obtain written terms and conditions regarding products designed for such applications.

No license, express or implied, by estoppel or otherwise, to any intellectual property rights is granted by this document or by any conduct of Vishay. Product names and markings noted herein may be trademarks of their respective owners.