

JLS Class J Fuses

600 VAC • Fast Acting • 1 – 600 Amperes



JLS series fuses provide space saving, fast acting overload and short-circuit protection for non-inductive loads. When used for motors or other inductive loads, the ampere rating of JLS series fuses must be increased to prevent nuisance opening on in-rush currents. In such applications, JLS fuses may provide only short-circuit protection. Consider using Littelfuse POWR-PRO® JTD or JTD_ID series time-delay fuses in such circuits.

Applications

- General purpose circuits with little or no motor load.
- Resistive loads, such as resistance electric heat.
- Loads requiring fast acting overload protection, such as equipment containing solid-state devices.

Specifications

Voltage Ratings:	600 Volts AC
Interrupting Ratings:	200,000 amperes rms symmetrical
Ampere Range:	1 – 600 amperes
Approvals:	Standard 248-8, Class J
	UL Listed (File No: E81895)
	CSA Certified (File No: LR29862)
	QPL: Federal Specification No: WF-1814

Space Saving

- JLS fuse characteristics are similar to KLNK/KLSR fast acting Class RK1 fuses, but dimensionally are much smaller.

Safety

- 200,000 A.I.R. — Reliable interruption of all overcurrents up to 200,000 amperes.
- Extremely current-limiting — Stops damaging short-circuit current faster than any mechanical protective device.
- Fast acting — Provides fast acting protection to equipment such as variable speed drives, rectifiers and other equipment containing surge sensitive components.

Longer Equipment Life

- Current-limiting design reduces damage to equipment caused by heating and magnetic effects of short-circuit currents.

Economical

- Extremely current-limiting design often permits use of readily available, less costly equipment.
- Manufacturers of equipment containing dual voltage devices can simplify manufacturing and reduce inventory by standardizing on 600 volt JLS fuses and Class J fuse blocks for all AC voltage ratings.

Easy to use

- 200,000 A.I.R. rating minimizes need for short-circuit calculations.

NOTE: Littelfuse JLS fuses are not time-delay fuses. For applications where short-duration surges and spikes may cause nuisance fuse opening, consider the use of Littelfuse POWR-PRO JTD or JTD_ID series time-delay fuses.

Ampere Ratings

1	25	60	125	300
3	30	70	150	350
6	35	80	175	400
10	40	90	200	450
15	45	100	225	500
20	50	110	250	600

Example part number (series & amperage): JLS 110

Recommended Fuse Blocks

LPSJ series, LJ600 series
Refer to the Blocks and Holders section of this catalog for additional information.

JLS Class J Fuses

600 VAC • Fast Acting • 1 — 600 Amperes

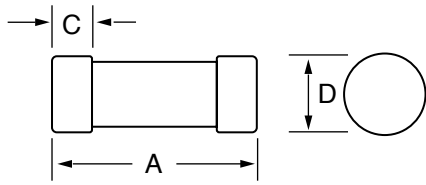


Fig. 1

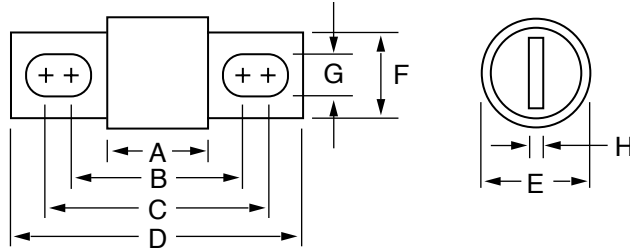
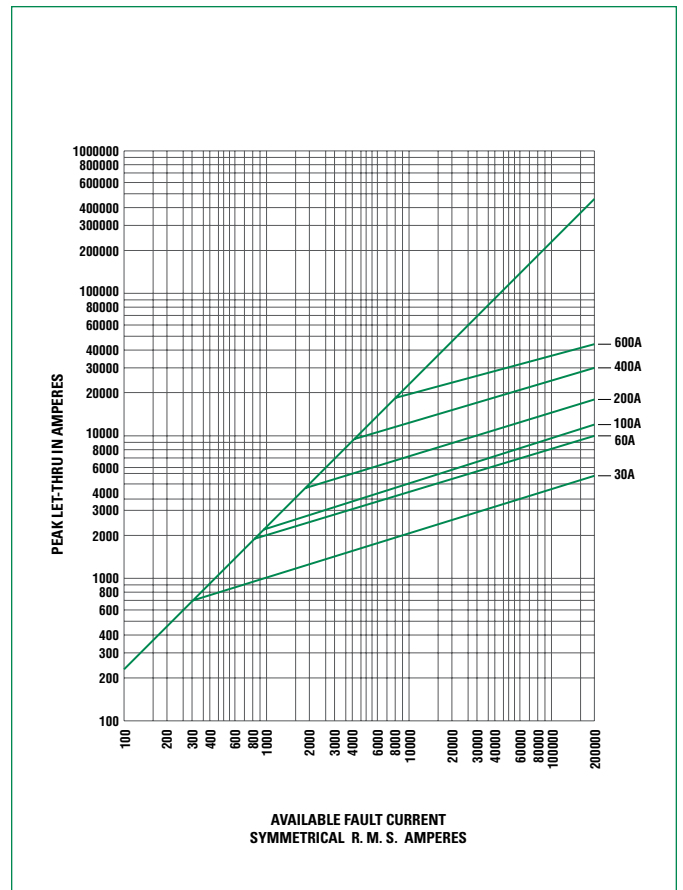
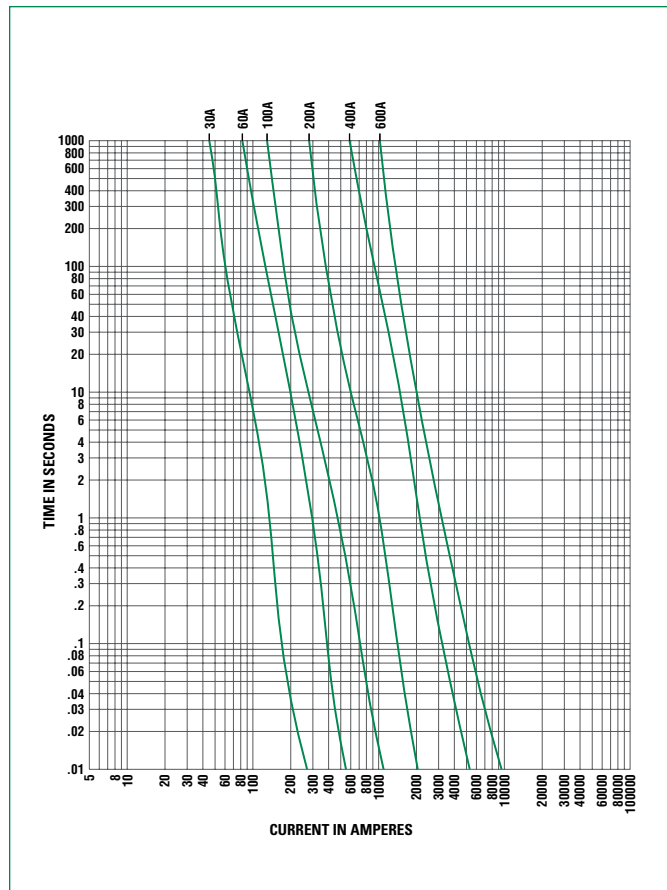


Fig. 2

Amperes	Refer to Fig. No.	Dimensions In Inches (mm in parentheses)							
		A	B	C	D	E	F	G	H
1 – 30	1	2¼ (57.2)	—	½ (12.7)	13/16 (20.6)	—	—	—	—
35 – 60	1	2¾ (60.3)	—	5/8 (15.9)	1¼ (27.0)	—	—	—	—
70 – 100	2	2⅝ (66.7)	3 ¹⁷ / ₃₂ (89.7)	3 ²³ / ₃₂ (94.5)	4 ⁵ / ₈ (117.5)	1 (25.4)	¾ (19.1)	9/32 (7.1)	1/8 (3.2)
110 – 200	2	3 (76.2)	4 ⁹ / ₃₂ (108.7)	4 ¹⁵ / ₃₂ (113.5)	5 ³ / ₄ (146.1)	1½ (38.1)	1 (28.6)	9/32 (7.1)	3/16 (4.8)
225 – 400	2	3 ³ / ₈ (85.7)	5 ¹ / ₈ (130.2)	5 ³ / ₈ (136.5)	7 ¹ / ₈ (181.0)	2 (50.8)	1 ⁵ / ₈ (41.3)	1 ³ / ₃₂ (10.3)	¼ (6.4)
450 – 600	2	3 ³ / ₄ (95.3)	5 ²⁷ / ₃₂ (148.4)	6 ⁵ / ₃₂ (156.4)	8 (203.2)	2½ (63.5)	2 (50.8)	1 ¹ / ₃₂ (13.5)	3/8 (9.5)



Littelfuse:

0JLS050.T 0JLS250.X 0JLS060.T 0JLS300.X 0JLS600.X 0JLS010.T 0JLS400.X 0JLS500.X 0JLS150.X
0JLS125.X 0JLS350.X 0JLS001.T 0JLS015.T 0JLS450.X 0JLS175.X 0JLS090.V JLS040 0JLS030.T 0JLS200.X
0JLS045.T 0JLS080.V 0JLS025.T 0JLS020.T 0JLS070.V 0JLS100.V 0JLS110.X 0JLS003.T 0JLS040.T
0JLS006.T 0JLS035.T 0JLS225.X