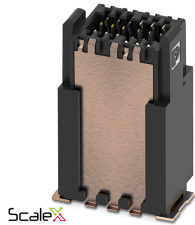


SMD male connector, shielded - FP 0,8/ 32-MV-SH 8,65 - 1154121

Please be informed that the data shown in this PDF Document is generated from our Online Catalog. Please find the complete data in the user's documentation. Our General Terms of Use for Downloads are valid (<http://phoenixcontact.com/download>)

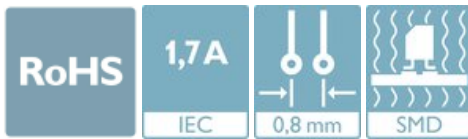


shielded SMD male connector, Nominal current at 20 °C: 1.7 A, Test voltage: 500 V AC, number of positions: 32, pitch: 0.8 mm, color: black, contact surface: Gold

The figure shows a 12-pos. version with 12 contacts

Your advantages

- ✓ Gold-plated contacts ensure transfer quality remains stable over the long term
- ✓ Reliable mechanical and electrical connections, thanks to the double-sided ScaleX contact system
- ✓ Robustness: ScaleX technology for high tolerance compensation and protection of contacts
- ✓ Flexible device design: various numbers of positions, designs, and stack heights with high wipe lengths



Key Commercial Data

Packing unit	1
GTIN	
GTIN	4063151154912
Custom tariff number	85366930

Technical data

Item properties

Brief article description	SMD male connector, shielded
Connector system	FINEPITCH 0,8 shielded
Range of articles	FP 0,8/...-MV-SH 8,65
Pitch	0.8 mm
Number of positions	32
Mounting type	SMD soldering

SMD male connector, shielded - FP 0,8/ 32-MV-SH 8,65 - 1154121

Technical data

Item properties

Number of rows	2
----------------	---

Electrical data

Nominal current at 20 °C	1.7 A IEC 60512-5-2:2002-02 (80-pos.)
Test voltage	500 V AC IEC 60512-4-1:2003
Contact resistance	≤25 mΩ, (IEC 60512-2-1:2002-02)
Insulation resistance	≥ 5 GΩ, (IEC 60512-3-1:2002-02)

Material data - contact

Note	WEEE/RoHS-compliant, free of whiskers according to IEC 60068-2-82/ JEDEC JESD 201
Contact material	Cu alloy
Surface characteristics	Selective coating
Metal surface contact area (top layer)	Gold (Au)
Metal surface contact area (middle layer)	Nickel (Ni)
Metal surface soldering area (top layer)	Tin (Sn)
Metal surface soldering area (middle layer)	Nickel (Ni)

Material data - housing

Housing color	black (9005)
Insulating material	LCP
Insulating material group	IIIa
CTI according to IEC 60112	150
Flammability rating according to UL 94	V0

Dimensions for the product

Caption	Schematische Abbildung - weitere Details siehe Produktfamilienzeichnung im Download Center
Length [l]	6.1 mm
Width [w]	16.7 mm
Height [h]	13.75 mm
Pitch	0.8 mm
Height (without solder pin)	13.15 mm

Dimensions for PCB design

Hole diameter	0.75 mm
Pad geometry	0.5 x 1.1 mm

Dimensions for the application

Contact cover	0.8 mm
Overlap length	1.5 mm

SMD male connector, shielded - FP 0,8/ 32-MV-SH 8,65 - 1154121

Technical data

Dimensions for the application

Medium offset	± 0.7 mm in longitudinal and transverse direction
Angular tolerance	± 5 ° in longitudinal and transverse direction (when plugging in)
	± 5 ° in longitudinal and transverse direction (when plugged in)
Stack height	13,5 mm Tolerance: +1,5 mm (in combination with Range of articles:FP 0,8/...-FV-SH 4,85)
	16,5 mm Tolerance: +1,5 mm (in combination with Range of articles:FP 0,8/...-FV-SH 7,85)
Axial offset in X direction (longitudinal)	± 0.3 mm (Tolerance compensation when plugged in)
Axial offset in Y direction (transversal)	± 0.3 mm (Tolerance compensation when plugged in)

Packaging information

Type of packaging	packed in cardboard
Pieces per package	250
Denomination packing units	Pcs.

Data transmission

Data transmission rate	up to 16 Gbps
------------------------	---------------

General product information

Type of note	Notes on operation
	Details for soldering processes
Note	The permissible voltage during operation depends on the application, taking into consideration the air clearances and creepage distances within the scope of insulation requirements in accordance with IEC 60664-1.
	The items are suitable for assembly on both sides and for overhead soldering.

Processing notes

Process	Reflow soldering
Specification	Following IPC/JEDEC J-STD-020E:2014-12
Moisture Sensitive Level	MSL 1
Classification temperature T _c	260 °C

Ambient conditions

Ambient temperature (storage/transport)	-40 °C ... 70 °C
Ambient temperature (assembly)	-5 °C ... 100 °C
Ambient temperature (operation)	-55 °C ... 125 °C

Mechanical tests

Insertion and withdrawal force per contact	1.2 N
--	-------

Air clearances and creepage distances

Air clearances and creepage distances	min. 0.25 mm
---------------------------------------	--------------

SMD male connector, shielded - FP 0,8/ 32-MV-SH 8,65 - 1154121

Technical data

Current carrying capacity / derating curves

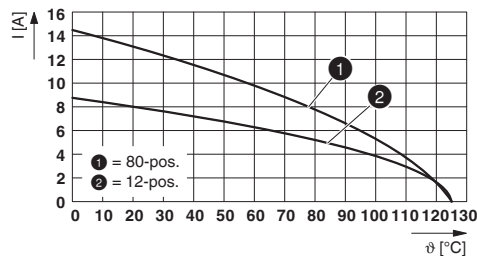
Caption	Type: FP 0,8/...-MV-SH 8,65 with FP 0,8/...-FV-SH 7,85 – contacts
---------	---

Service life

Service life	500 Insertion/withdrawal cycles, Performance level 1
--------------	--

Drawings

Diagram



Type: FP 0,8/...-MV-SH 8,65 with FP 0,8/...-FV-SH 7,85 - shroud

Classifications

eCl@ss

eCl@ss 10.0.1	27440402
eCl@ss 11.0	27460201
eCl@ss 9.0	27440402

UNSPSC

UNSPSC 18.0	39121409
UNSPSC 19.0	39121409
UNSPSC 20.0	39121409
UNSPSC 21.0	39121409

Accessories

Additional products

SMD female connector, shielded - FP 0,8/ 32-FV-SH 7,85 - 1043683



Shielded SMD female connector, Nominal current at 20 °C: 1.7 A, Test voltage: 500 V AC, number of positions: 32, pitch: 0.8 mm, color: black, contact surface: Gold, type of contact: Female connector

SMD male connector, shielded - FP 0,8/ 32-MV-SH 8,65 - 1154121

Accessories

SMD female connector, shielded - FP 0,8/ 32-FV-SH 4,85 - 1043711



Shielded SMD female connector, Nominal current at 20 °C: 1.7 A, Test voltage: 500 V AC, number of positions: 32, pitch: 0.8 mm, color: black, contact surface: Gold, type of contact: Female connector, mounting: SMD soldering

SMD female connector, shielded - FP 0,8/ 32-FH-SH - 1043723



Shielded SMD female connector, Nominal current at 20 °C: 1.7 A, Test voltage: 500 V AC, number of positions: 32, pitch: 0.8 mm, color: black, contact surface: Gold, type of contact: Female connector
