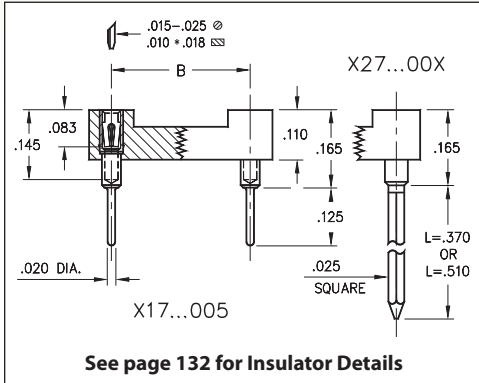
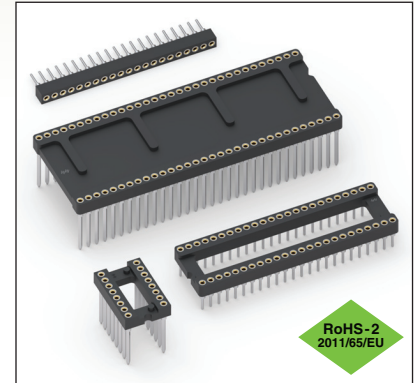


DUAL-IN-LINE SOCKETS

SERIES 117, 127, 217, 227, 317, 327 • SHRINK DIP, SOLDER TAIL & WRAPOST



- High density DIP sockets and strips for devices featuring .070" lead spacing
- Solder tails use MM #1802 receptacles, See page 169 for details. Wraposts use MM #1702-2 or 1703-3 receptacles, See page 198 for details
- Hi-Rel, 4-finger BeCu #30 contact is rated at 3 amps. See page 253 for details
- Insulators are high temperature thermoplastic, suitable for all soldering operations
- For Electrical, Mechanical and Environmental Data, see page 264 for details



Total number of pins	Pin Spacing			Quantity per tube	ORDERING INFORMATION						
	A	B	C		Solder Tail	L = .370 (2 Level Wrapost)	L = .510 (3 Level Wrapost)				
					OPEN FRAME DIP SOCKET						
16	0.572	0.3	0.39	35	117-XX-316-41-005000	127-XX-316-41-002000	127-XX-316-41-003000				
28	0.992	0.4	0.49	20	117-XX-428-41-005000	127-XX-428-41-002000	127-XX-428-41-003000				
30	1.062	0.4	0.49	18	117-XX-430-41-005000	127-XX-430-41-002000	127-XX-430-41-003000				
48	1.692	0.4	0.49	12	117-XX-448-41-005000	127-XX-448-41-002000	127-XX-448-41-003000				
20	0.712	0.6	0.69	28	117-XX-620-41-005000	127-XX-620-41-002000	127-XX-620-41-003000				
28	0.992	0.6	0.69	20	117-XX-628-41-005000	127-XX-628-41-002000	127-XX-628-41-003000				
40	1.412	0.6	0.69	14	117-XX-640-41-005000	127-XX-640-41-002000	127-XX-640-41-003000				
42	1.482	0.6	0.69	13	117-XX-642-41-005000	127-XX-642-41-002000	127-XX-642-41-003000				
48	1.692	0.6	0.69	11	117-XX-648-41-005000	127-XX-648-41-002000	127-XX-648-41-003000				
52	1.832	0.6	0.69	11	117-XX-652-41-005000	127-XX-652-41-002000	127-XX-652-41-003000				
56	1.972	0.6	0.69	10	117-XX-656-41-005000	127-XX-656-41-002000	127-XX-656-41-003000				
64	2.252	0.6	0.69	8	117-XX-664-41-005000	127-XX-664-41-002000	127-XX-664-41-003000				
68	2.392	0.6	0.69	8	117-XX-668-41-005000	127-XX-668-41-002000	127-XX-668-41-003000				
64	2.252	0.75	0.84	8	117-XX-764-41-005000	127-XX-764-41-002000	127-XX-764-41-003000				
					CLOSED FRAME DIP SOCKET						
64	2.252	0.75	0.84	8	217-XX-764-41-005000	227-XX-764-41-002000	227-XX-764-41-003000				
					SINGLE ROW STRIP SOCKET						
					If desired, we will supply any length up to 21 pins.						
21	1.482	---	.104	-	317-XX-121-41-005000	327-XX-121-41-002000	327-XX-121-41-003000				
<div style="border: 1px solid black; border-radius: 50%; padding: 5px; display: inline-block;"> XX=Plating Code See to Right </div>					SPECIFY PLATING CODE XX=		91	93	41	43	47
					Sleeve (Pin)		200 μ" Sn/Pb	200 μ" Sn/Pb	200 μ" Sn	200 μ" Sn	200 μ" Sn
					Contact (Clip)		10 μ" Au	30 μ" Au	10 μ" Au	30 μ" Au	Au Flash



Mill-Max:

317-93-121-41-005000 217-93-764-41-005000 117-43-764-41-005000 117-43-668-41-005000 117-43-664-41-005000 117-43-656-41-005000 117-43-652-41-005000 117-43-648-41-005000 117-43-642-41-005000 117-43-640-41-005000 117-43-628-41-005000 117-43-620-41-005000 117-43-448-41-005000 117-43-430-41-005000 117-43-428-41-005000 117-43-316-41-005000 317-93-103-41-005000 117-93-764-41-005000 117-93-628-41-005000 117-93-620-41-005000 117-93-652-41-005000 117-93-640-41-005000 117-93-648-41-005000 117-93-668-41-005000 117-93-642-41-005000 117-93-664-41-005000 117-93-656-41-005000 317-93-108-41-005000 117-93-428-41-005000 117-93-448-41-005000 117-93-316-41-005000 117-93-430-41-005000 127-93-764-41-003000 127-93-764-41-002000 127-93-668-41-003000 127-93-668-41-002000 127-93-664-41-003000 127-93-664-41-002000 127-93-656-41-003000 127-93-656-41-002000 127-93-652-41-003000 127-93-652-41-002000 127-93-648-41-003000 127-93-648-41-002000 127-93-642-41-003000 127-93-642-41-002000 127-93-640-41-003000 127-93-640-41-002000 127-93-628-41-003000 127-93-628-41-002000 127-93-620-41-003000 127-93-620-41-002000 127-93-448-41-003000 127-93-448-41-002000 127-93-430-41-003000 127-93-430-41-002000 127-93-428-41-003000 127-93-428-41-002000 127-93-316-41-003000 127-93-316-41-002000 317-43-121-41-005000 217-43-764-41-005000 127-43-764-41-003000 127-43-764-41-002000 127-43-668-41-003000 127-43-668-41-002000 127-43-664-41-003000 127-43-664-41-002000 127-43-656-41-003000 127-43-656-41-002000 127-43-652-41-003000 127-43-652-41-002000 127-43-648-41-003000 127-43-648-41-002000 127-43-642-41-003000 127-43-642-41-002000 127-43-640-41-003000 127-43-640-41-002000 127-43-628-41-003000 127-43-628-41-002000 127-43-620-41-003000 127-43-620-41-002000 127-43-448-41-003000 127-43-448-41-002000 127-43-430-41-003000 127-43-430-41-002000 127-43-428-41-003000 127-43-428-41-002000 127-43-316-41-003000 127-43-316-41-002000 317-43-116-41-005000 117-41-652-41-105000 117-93-668-61-005000 117-41-620-41-105000 117-93-430-61-005000 117-43-316-61-105000 117-43-668-61-005000 117-91-640-41-005000 117-43-628-61-105000 117-91-448-41-005000