

PART NUMBER	REV	FIRST USED	TERMINATOR	FEED TYPE	DESCRIPTION
1339772-1	A		BENCH & LEADMAKER	MECH POST FEED	HD-I APPLICATOR
7-1339772-1	A		BENCH & LEADMAKER	MECH POST FEED	-1 AND SPARE PARTS
7-1339772-7	A				SPARE PARTS KIT

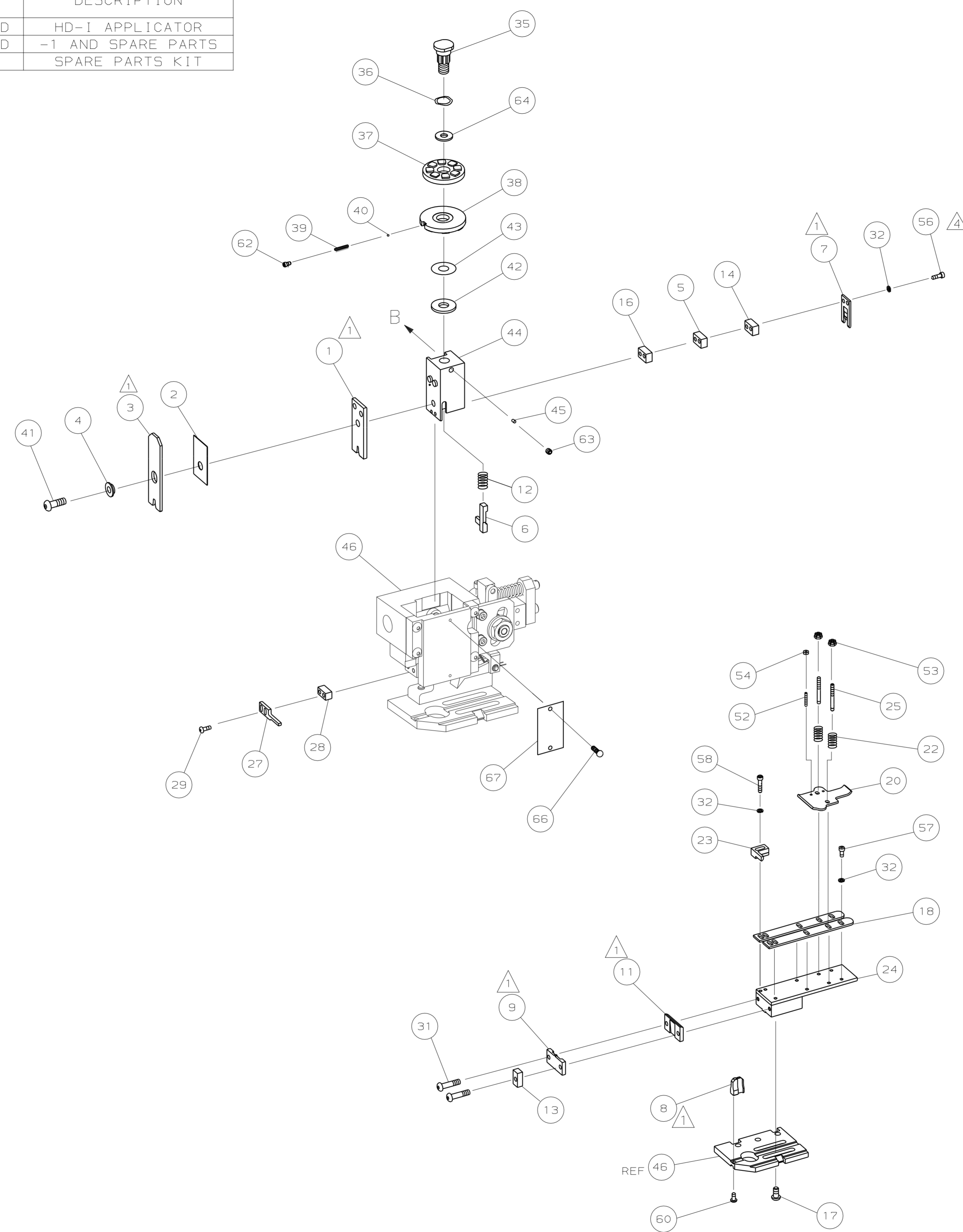
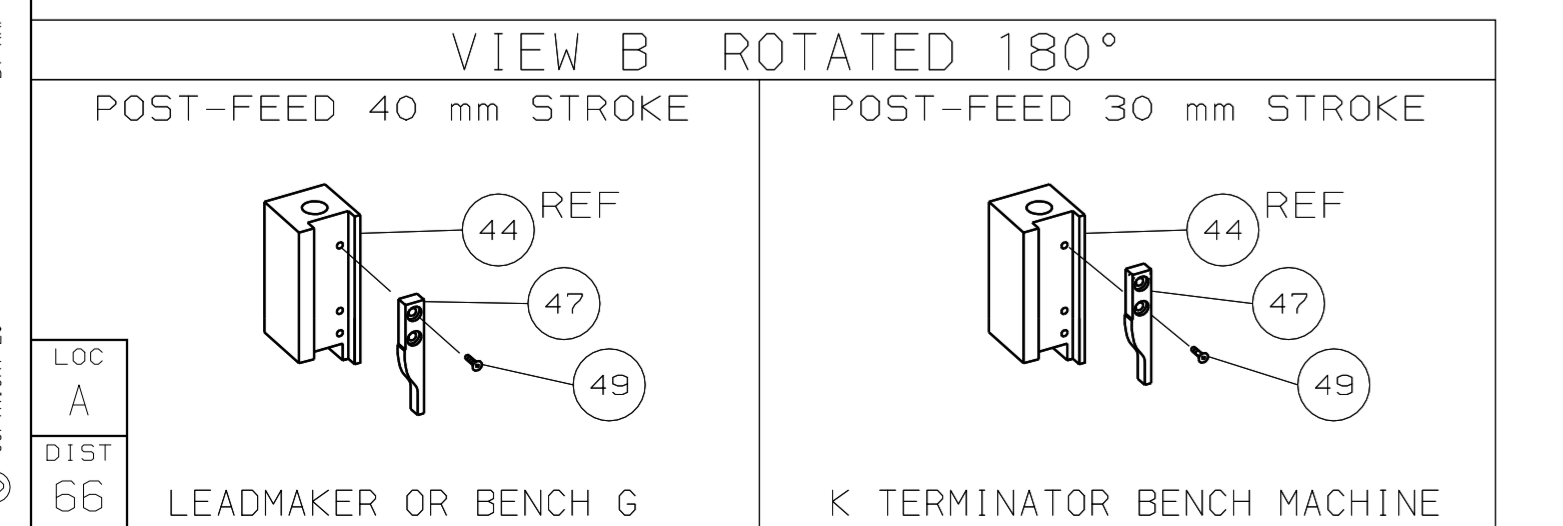
CRIMP DATA AMP TERMINAL AMP CRIMP SPECS			
TERMINAL NAME: TAB WITH LANCE MULTI-INTERLOCK CONN			
CRIMP	SIZE	TYPE	RANGE
WIRE	2.29 [.090 IN]	F	20-14 AWG or 0.50-2.27mm ²
INSUL	3.56 [.140 IN]	F	2.16-3.43 [.085-.135 IN]
WIRE STRIP LENGTH		APPL INSTRUCTION	
3.50-4.50 [.138-.177 IN]		408-8323	

TERMINAL	FEED
APPL SPEC 114-5018	26.66 [.1050 IN]

TERMINALS APPLIED				
170221	-	-	-	-
-	-	-	-	-
-	-	-	-	-
-	-	-	-	-
-	-	-	-	-
-	-	-	-	-
-	-	-	-	-
-	-	-	-	-
-	-	-	-	-

WIRE SIZE	CRIMP HEIGHT	PIN PN AND LENGTH [IN]
2.00mm ²	1.78 ±0.05 [.070 ±.002 IN]	8-354778-1 [.2900]
1.25mm ²	1.50 ±0.05 [.059 ±.002 IN]	354779-4 [.3010]
0.85mm ²	1.34 ±0.05 [.053 ±.002 IN]	1-354779-7 [.3075]
0.50mm ²	1.30 ±0.05 [.051 ±.002 IN]	2-354779-1 [.3095]

- ⚠ RECOMMENDED SPARE PARTS.
- 2. GREASE RAM, CAM, CAM FOLLOWER AND FEED ROD LIGHTLY.
- 3. LUBRICATE DAILY PER THE APPLICATOR INSTRUCTION SHEET SUPPLIED WITH THE APPLICATOR.
- 4. CUT TO LENGTH AT ASSY.
- 5. RANGE QUOTED IS THAT OF THE TERMINAL, NOT THE APPLICATOR.
- 6. SEE APPLICATION SPECIFICATION FOR SPECIFIC WIRE DETAILS.



QTY	REQD	PER	ASSY	PART NO	DESCRIPTION	ITEM NO
-	1	1		1339772	PRINT, APPLICATOR LOG SHEET	73
-	1	1		1338705-2	DOCUMENTATION PACKAGE	72
						71
						70
						68
						67
-	1	1		461264-1	PLATE, IDENTIFICATION	66
-	2	2		21017-2	SCR,DRIVE (#2X.19) ID PLATE	65
						64
-	1	1		986950-1	WASHER, FLAT PRECISION	63
-	1	1		3-18031-0	SCR,SKT SET (M6X6) RAM	62
-	1	1		18023-9	SCR,SKT CAP (M4X6) CP DSC	61
						60
-	1	1		18024-7	SCR,BHC (M4X10) ANVIL	59
-	2	2		1-18023-3	SCR,SHC (M4X16) HOLD DOWN	58
-	5	5		1-18023-0	SCR,SHC (M4X8) STRIP GUIDE	57
-	2	2		1-18023-5	SCR,SHC (M4X25) SLUG BLADE	56
						55
-	2	2		18029-1	NUT, HEX (M3) DRAG	54
-	2	2		986965-1	NUT, HEX SL (M4) DRAG STUD	53
-	2	2		2-18032-2	SCR,SKT SET (M3X10) DRAG	52
						51
						50
-	1	1		18024-3	SCR,BHC (M3X10) CAM	49
-	1	1		1338676-1	CAM, POST-FEED 30 & 40 mm ST	48
-	1	1		1338662-1	APPLICATOR, BASIC (SUBASSY)	47
-	1	1		690191-1	PLUG, NYLON	46
-	1	1		1320998-1	RAM	45
-	1	1		690125-1	WASHER, LAMINATED	44
-	1	1		690124-1	WASHER, RAM	43
-	1	1		2-18024-6	SCREW,BHC (M8X25) CRIMPER	42
-	1	1		23241-1	BALL, STEEL	41
-	1	1		2-22278-7	SPRING, COMPRESSION	39
-	1	1		1320922-1	DISC, INSULATION	38
-	1	1		354777-1	WIRE DISC, PLASTIC	37
-	1	1		22480-5	WASHER, SPRING	36
-	1	1		690212-1	POST, RAM	35
						34
						33
-	9	9		18025-2	WASHER, LOCK (M4) SHEAR BL	32
-	2	2		4-18024-7	SCR,BHC (M4X25) SHEAR PL	31
						30
-	2	2		18024-8	SCR,BHC (M4X12) STRIPPER	29
-	1	1		3-690451-2	SPACER, STRIPPER	28
-	1	1		240639-1	STRIPPER	27
						26
-	2	2		1320906-1	DRAG, STUD	25
-	1	1		1320995-1	PLATE, STRIP GUIDE	24
-	1	1		240825-2	PLATE, STRIP HOLD DOWN	23
-	2	2		4-22281-1	SPRING, DRAG	22
						21
-	1	1		1338665-1	DRAG, STOCK	20
						19
-	2	2		1338663-6	GUIDE, LOWER STRIP	18
-	4	4		1-18024-8	SCR,BHC (M6X12) STRIP GD PL	17
-	1	1		1338708-1	SPACER, SLUG BLADE	16
						15
-	1	1		2-240641-0	SPACER, SLUG BLADE	14
-	1	1		1-690481-0	SPACER, HOLD DOWN	13
-	1	1		23846-1	SPRING, HOLD DOWN	12
-	1	1		240644-1	PLATE, REAR SHEAR	11
						10
-	1	1		690482-5	PLATE, FRONT SHEAR	9
-	1	2	1	4-1333217-3	ANVIL	8
-	1	1		690474-5	BLADE, SLUG	7
-	1	1		5-455892-0	HOLD DOWN, TERMINAL	6
-	1	1		6-240641-8	SPACER, SLUG BLADE	5
-	1	1		238009-1	SPACER, BLOCK CRIMPER	4
-	1	2	1	1-456134-4	CRIMPER, INSULATION	3
-	1	1		455888-6	SPACER, CRIMPER	2
-	1	2	1	4-456406-7	CRIMPER, WIRE	1
-	77	71	-1			

DIMENSIONS: mm [INCHES]		MATL	HT TR	FIN
DO NOT SCALE PRINT.				
TOLERANCES UNLESS OTHERWISE SPECIFIED:				
1	PLC DEC ±			
2	PLC DEC ±			
3	PLC DEC ±			
ANGLES ±				
SURF TEXTURE: ✓				
REMOVE BURRS, BREAK SHARP EDGES RO.38 MAX				
CAGE CODE 00779		CUSTOMER AND ASSEMBLY DRAWING		

THIS DRAWING IS A CONTROLLED DOCUMENT.

LAYOUT L1339772

SET UP GAGE 458638-3

RELEASER FOR PUBLICATION BY AMP INCORPORATED. ALL RIGHTS RESERVED.

THIS DRAWING IS UNRELEASABLE. COPYRIGHT © 20