

Terminations & Loads

Model 1429 Medium Power, N & 3.5mm Connectors Convection Cooled

dc to 18.0 GHz
 25 Watts

RoHS



Features

- /// Designed to meet environmental requirements of MIL-D-39030.
- /// Rugged injection molded connector.
- /// Low Intermodulation Option.
- /// 1 Kilowatt Peak Power

Specifications

NOMINAL IMPEDANCE: 50 Ω

FREQUENCY RANGE: dc to 18.0 GHz

| MAXIMUM SWR: | |
|-----------------|------|
| Frequency (GHz) | SWR |
| dc - 18 | 1.20 |

POWER RATING: 25 watts average (mounted horizontally assuming unobstructed air flow and natural convection around unit) @ 25°C ambient temperature, derated linearly to 2.5 watts @ 125°C. 1 kilowatt peak (5 μsec pulse width; 1.25% duty cycle).

INTERMODULATION (Model 1429-X-LIM Only): IM3 (Reflected) = -100 dBc with two input signals @ 869 MHz and 891 MHz with an average power of +41 dBm each.

TEMPERATURE RANGE: -55°C to +125°C

TEST DATA: Swept data plots of SWR from 50 MHz to 18 GHz is available at additional cost.

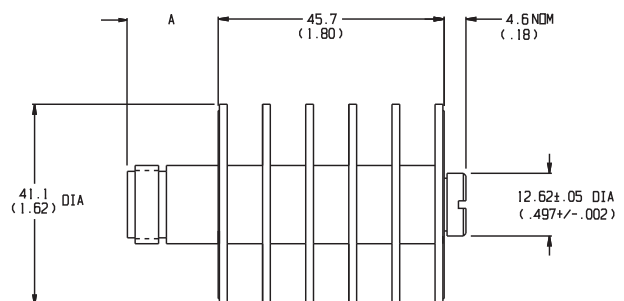
CONNECTOR: Type N connector per MIL-STD-348 interface dimensions - mate nondestructively with MIL-C-39012 connector. Choice of male (-4) or female connector (-3).

3.5mm connector mate nondestructively with SMA per MIL-C-39012, 2.92mm and other 3.5mm connector. Choice of male (-2) or female connector (-1).

CONSTRUCTION: Black, finned aluminum body, stainless steel connector; gold plated beryllium copper female contact or stainless steel male contact.

WEIGHT: 100 g (3.5 oz)

PHYSICAL DIMENSIONS:

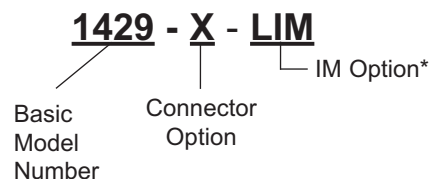


| Model # | DIM A | Connector Type |
|---------|-------------|----------------|
| 1429-1 | 13.2 (0.52) | 3.5mm female |
| 1429-2 | 14.0 (0.55) | 3.5mm male |
| 1429-3 | 18.3 (0.72) | N female |
| 1429-4 | 23.1 (0.91) | N male |

NOTE: All dimensions are given in mm (inches) and are maximum, unless otherwise specified.

MODEL NUMBER DESCRIPTION:

Example:



* Add -LIM to entire model number for Low Intermodulation option.