

# DIGITRON SEMICONDUCTORS

**1N5415 – 1N5420**

**FAST SWITCHING RECTIFIER**  
GLASS PASSIVATED

## MAXIMUM RATINGS

PEAK INVERSE VOLTAGE	TYPE
50V	1N5415
100V	1N5416
200V	1N5417
400V	1N5418
500V	1N5419
600V	1N5420
Maximum Output D.C. Current @ T <sub>A</sub> =55°C: @ T <sub>A</sub> =100°C:	3.0A
	2.0A
Non-Repetitive Sinusoidal: Surge Current (8.3ms)	80A
Operating Temperature Range:	-65°C to +175°C
Storage Temperature Range:	-65°C to +200°C
Thermal Resistance $\theta_{\Omega}$ @ L 3/8"	20°C/W

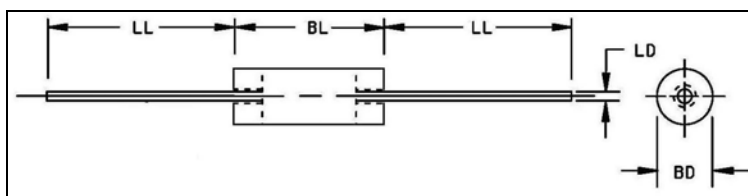
## ELECTRICAL CHARACTERISTICS

TYPE	PIV	MINIMUM REVERSE BREAKDOWN VOLTAGE @ 50 $\mu$ A	FORWARD VOLTAGE		MAXIMUM REVERSE CURRENT		MAXIMUM REVERSE RECOVERY TIME
			MIN.	MAX.	25°C	100°C	
1N5415	50V	55V	0.6V	1.5V (pk)	1.0 $\mu$ A	20 $\mu$ A	150
1N5416	100V	110V					150
1N5417	200V	220V	@ 9Adc tp=300 $\mu$ s				150
1N5418	400V	440V					150
1N5419	500V	550V					250
1N5420	600V	660V					400

## MECHANICAL CHARACTERISTICS

<b>CASE:</b>	Glass
<b>MARKING:</b>	Body Painted, Alpha Numeric
<b>POLARITY:</b>	Cathode Band

Ltr.	Dimensions			
	Inches		Millimeters	
	Min	Max	Min	Max
<b>BD</b>	-	0.145	-	3.680
<b>BL</b>	-	0.300	-	7.620
<b>LD</b>	0.040 $\pm$ 0.003		1.020 $\pm$ 0.0300	
<b>LL</b>	0.975	-	24.800	-



Available Non-RoHS (standard) or RoHS compliant (add PBF suffix).  
Available as "HR" (high reliability) screened per MIL-PRF-19500, JANTX level. Add "HR" suffix to base part number.