

## 2,000 V - 5,000 V Rectifiers

1.5 A - 3.5 A Forward Current  
70 ns Recovery Time

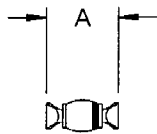
**1N6513LL**  
**1N6515LL**  
**1N6517LL**

FORMED LEAD

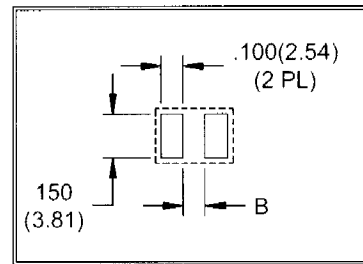
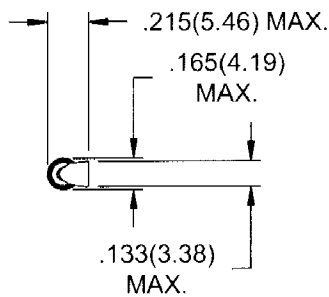


ELECTRICAL CHARACTERISTICS AND MAXIMUM RATINGS												
Part Number	Working Reverse Voltage (V <sub>rw</sub> )	Average Rectified Current (I <sub>o</sub> )		Reverse Current @ V <sub>rw</sub> (I <sub>r</sub> )		Forward Voltage (V <sub>f</sub> )		1 Cycle Surge Current I <sub>p</sub> =8.3ms (I <sub>fsm</sub> )	Repetitive Surge Current (I <sub>frm</sub> )	Reverse Recovery Time (3) (T <sub>rr</sub> )	Thermal Impd. θ <sub>J-C</sub>	Junction Cap. @50VDC @1kHz (C <sub>j</sub> )
		55°C(1)	100°C(2)	25°C	100°C	25°C	25°C	25°C	25°C	25°C	25°C	25°C
	Volts	Amps	Amps	μA	μA	Volts	Amps	Amps	Amps	ns	°C/W	pF
1N6513LL	2000	3.5	2.4	1.0	25	3.5	2.0	100	15	70	5.0	25
1N6515LL	3000	2.5	1.5	1.0	25	6.0	1.5	60	10	70	5.0	20
1N6517LL	5000	1.5	1.0	1.0	25	8.0	1.0	40	8	70	5.0	16

(1)TC=55°C (2)TC=100°C (3)I<sub>f</sub>=0.5A, I<sub>r</sub>=1.0A, I<sub>rr</sub>=0.25A \*Op. Temp. = -65°C to +175°C Stg. Temp. = -65°C to +200°C



.022(.56)



Part	A	B
1N6513LL	.345(8.76) MAX. .315(8.00) MIN.	.210 (5.33)
1N6515LL	.365(9.27) MAX. .335(8.51) MIN.	.230 (5.84)
1N6517LL	.380(9.65) MAX. .350(8.89) MIN.	.250 (6.35)



NJ Semi-Conductors reserves the right to change test conditions, parameter limits and package dimensions without notice. Information furnished by NJ Semi-Conductors is believed to be both accurate and reliable at the time of going to press. However, NJ Semi-Conductors assumes no responsibility for any errors or omissions discovered in its use. NJ Semi-Conductors encourages customers to verify that datasheets are current before placing orders.

**Quality Semi-Conductors**

