

POWER DISCRETES
Description

Quick reference data

$$V_R = 200 - 1000V$$

$$I_F = 1.5 - 2.0 A$$

$$t_{rr} = 30 - 60ns$$

$$V_F = 1.6 - 1.95V$$

Features

- ◆ Low reverse leakage current
- ◆ Hermetically sealed in fused metal oxide
- ◆ Good thermal shock resistance
- ◆ Low forward voltage drop
- ◆ Avalanche capability

Absolute Maximum Ratings

Electrical specifications @ $T_A = 25^\circ C$ unless otherwise specified.

	Symbol	1N6620	1N6621	1N6622	1N6623	1N6624	1N6625	Units
Working Reverse Voltage	V_{RWM}	200	400	600	800	900	1000	V
Average Forward Current @ 55°C in free air, lead length 0.375"	$I_{F(AV)}$	2.0	2.0	2.0	1.5	1.5	1.5	A
Non-Repetitive Surge Current ($t_p = 8.3mS$ @ V_R & T_{JMAX}) ($t_p = 8.3mS$, @ V_R & $25^\circ C$)	I_{FSM}	20	20	20	20	20	15	A
Storage Temperature Range	T_{STG}	-65 to +175						°C

POWER DISCRETES
Electrical Specifications

	Symbol	1N6620	1N6621	1N6622	1N6623	1N6624	1N6625	Units
Forward Voltage Drop max. @ I_F , $T_J = 25^\circ\text{C}$	V_F	1.6 @ $I_F = 2\text{A}$	1.6 @ $I_F = 2\text{A}$	1.6 @ $I_F = 2\text{A}$	1.8 @ $I_F = 1.5\text{A}$	1.8 @ $I_F = 1.5\text{A}$	1.95 @ $I_F = 1.5\text{A}$	V
Reverse Current max. @ V_{RWM} , $T_J = 25^\circ\text{C}$ @ V_{RWM} , $T_J = 150^\circ\text{C}$	I_R I_R	0.5 150	0.5 150	0.5 150	0.5 150	0.5 150	1.0 200	μA
Reverse Recovery Time max. 0.5A I_F to 1.0A I_{RM} recovers to 0.25A $I_{RM(REC)}$	t_{rr}	30	30	30	50	50	60	ns
Junction Capacitance typ. @ $V_R = 10\text{V}$, $f = 1\text{MHz}$	C_j	10						pF

Thermal Characteristics

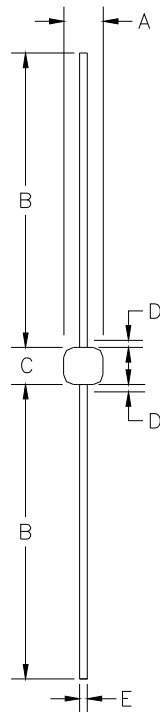
	Symbol	1N6620	1N6621	1N6622	1N6623	1N6624	1N6625	Units
Thermal Resistance-Junction to Lead Lead length = 0.375" Lead length = 0.0"	$R_{\theta JL}$ $R_{\theta JL}$	38						$^\circ\text{C/W}$

POWER DISCRETES
Ordering Information

Part Number	Description
1N6620	Axial leaded hermetically sealed ⁽¹⁾
1N6621	
1N6622	
1N6623	
1N6624	
1N6625	

Note:

(1) Available in bulk and tape and reel packaging. Please consult factory for quantities.

Outline Drawing


G4

DIM ^N	Dimensions				Note
	Inches		Millimeters		
	MIN	MAX	MIN	MAX	
A	0.065	0.085	1.65	2.16	-
B	0.7	1.3	17.78	33.02	-
C	0.125	0.25	3.18	6.35	-
D	-	0.03	-	0.8	1
E	0.027	0.032	0.69	0.81	-

Note:

(1) Lead diameter uncontrolled over this region.

Contact Information

Semtech Corporation
 Power Discrettes Products Division
 200 Flynn Road, Camarillo, CA 93012
 Phone: (805)498-2111 FAX (805)498-3804