

New Jersey Semi-Conductor Products, Inc.

20 STERN AVE.
SPRINGFIELD, NEW JERSEY 07081
U.S.A.

TELEPHONE: (201) 376-29
(212) 227-60
FAX: (201) 376-89

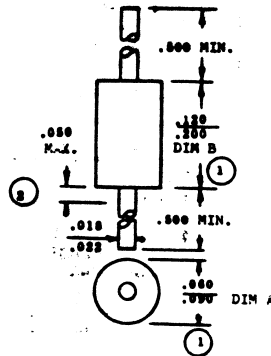
PARAMETERS

1N758A1

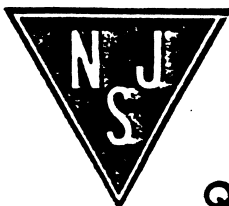
REF/REG DIODE, 250mW < P(D) ≤ 400mW

Description: Ref/Reg Diode, 250mW < P(D) ≤ 400mW

Mil/High-Rel? (Y/N).....	
Nom. Ref. Volt.....	10
Test Current.....	20m
Tol. (%).....	5
PD Max. (W).....	400m
Dyn. Zmax (j).....	7.0
Temp Coef pp/10k.....	
Oper. Temp (°C) Max.....	
Pkg Style.....	DO-35
Surface Mounted (Y/N).....	N



1. PACKAGE CONTOUR OPTIONAL WITHIN DIMENSIONS A & B. SLUGS, IF ANY, SHALL BE INCLUDED WITHIN THIS CYLINDER BUT SHALL NOT BE SUBJECT TO THE MINIMUM LIMIT OF DIM. A.
2. LEAD DIAMETER NOT CONTROLLED IN THIS ZONE TO ALLOW FOR FLASH, LEAD FINISH BUILD-UP, AND MINOR IRREGULARITIES OTHER THAN SLUGS.



Quality Semi-Conductors