

Power Inlet Connectors

# SR Series



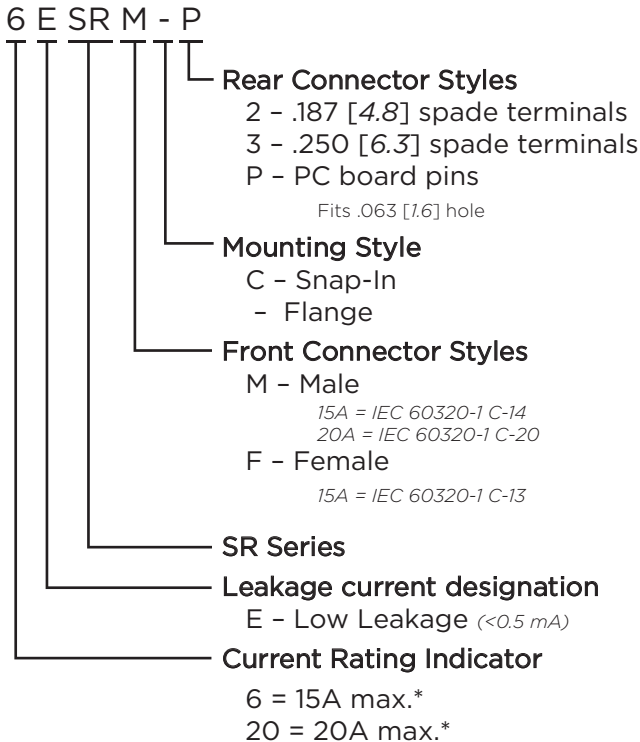
UL Recognized  
CSA Certified  
VDE Approved\*



## SR Series

- Full Line of popular AC receptacles
- Male and female power line connectors
- Snap-in and flange mount versions
- IEC60320-1 C-13 & C14 inlets rated up to 15A
- IEC60320-1 C-19 & C-20 inlets rated up to 20A

## Ordering Information



\*15A versions are VDE approved at 10A, 250VAC max.  
20A versions are VDE approved at 16A, 250VAC max.

## Specifications

**Rated Voltage (max.):** 250 VAC

**Materials:**

- Insulator:** Thermoplastic UL 94V-0 flame rating
- Prongs:** Solid brass, nickel plated
- Terminals:** Brass, tin plated

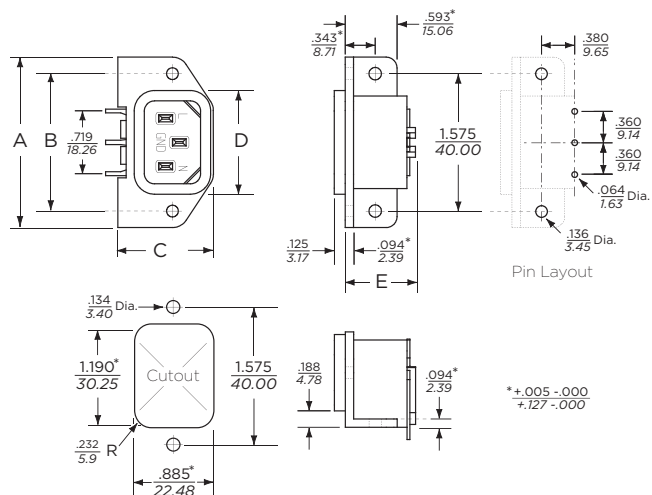
**Temperature Rating:** For "cold" connections, 65°C

## Available Part Numbers

Type	Male Connector	Female Connector
PC Pins	6ESRM-P	
Snap-In	6ESRMC2	6ESRFC3
Flange Mount	6ESRM-3	6ESRF-3
Snap-In	20ESRMC2	
Flange Mount	20ESRM-3	

## Case Styles

### 6ESRM-P

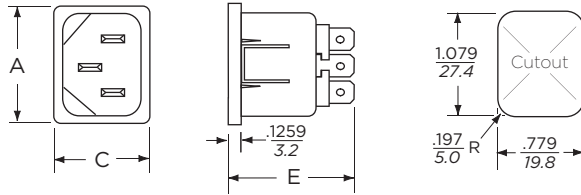


**Power Inlet Connectors** *(continued)*

# SR Series

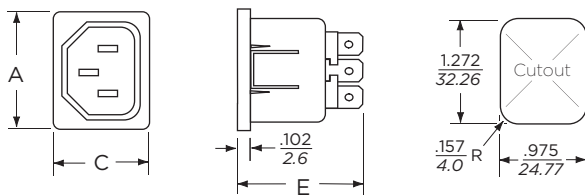
**Case Styles** *(continued)*

**6ESRMC2**



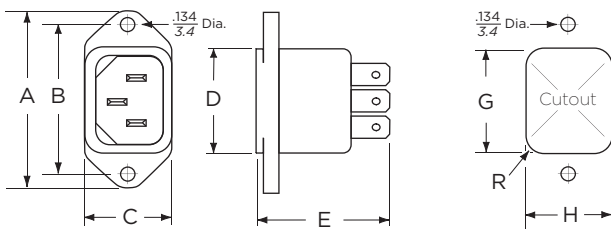
Typical Dimensions:  
Front Connector: IEC 60320-1 C14  
Rear Terminals: .187 [4.8] with .07 [1.8] Dia. hole

**6ESRFC3**



Typical Dimensions:  
Front Connector: IEC 60320-1 C13  
Rear Terminals: .25 [6.3] with .07 [1.8] Dia. hole

**6ESRM-3**

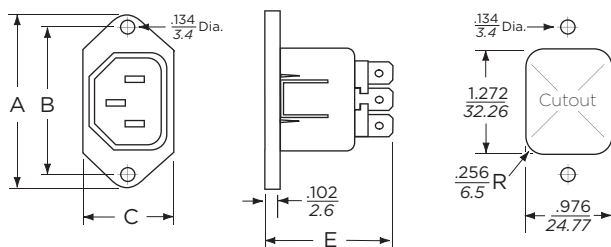


Cutout Dimensions:

	Rear Mount	Front Mount
G:	1.19 [30.23]	1.079 [27.4]
H:	0.894 [22.7]	0.779 [19.8]
R:	0.232 [5.9]	0.197 [5.0]

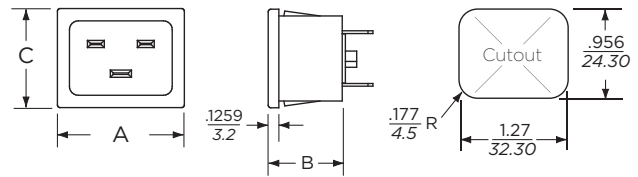
Typical Dimensions:  
Front Connector: IEC 60320-1 C14  
Rear Terminals: .25 [6.3] with .07 [1.8] Dia. hole

**6ESRF-3**



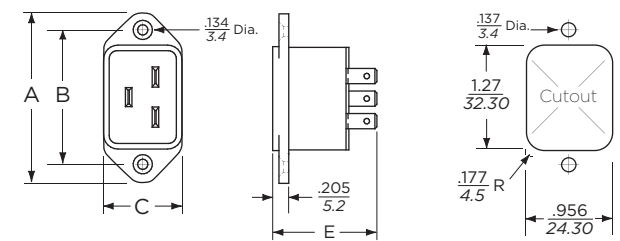
Typical Dimensions:  
Front Connector: IEC 60320-1 C13  
Rear Terminals: .25 [6.3] with .07 [1.8] Dia. hole

**20ESRMC2**



Typical Dimensions:  
Front Connector: IEC 60320-1 C20  
Rear Terminals: .25 [6.3] with .07 [1.8] Dia. hole

**20ESRM-3**



Typical Dimensions:  
Front Connector: IEC 60320-1 C20  
Rear Terminals: .25 [6.3] with .07 [1.8] Dia. hole

**Case Dimensions**

Part No.	A (max.)	B $\begin{matrix} +.017 - .006 \\ +.43 - .15 \end{matrix}$	C (max.)	D (max.)	E (max.)
6ESRM-P	<b>1.96</b> 49.8	<b>1.575</b> 40.0	<b>1.094</b> 27.8	<b>1.118</b> 28.39	<b>.807</b> 20.5
6ESRMC2	<b>1.182</b> 30.00	-	<b>.885</b> 22.5	-	<b>1.192</b> 30.3
6ESRFC3	<b>1.39</b> 35.5	-	<b>1.09</b> 27.8	-	<b>1.496</b> 38.0
6ESRM-3	<b>1.96</b> 49.8	<b>1.575</b> 40.0	<b>.885</b> 22.5	<b>1.19</b> 30.23	<b>1.275</b> 32.4
6ESRF-3	<b>1.953</b> 49.6	<b>1.575</b> 40.0	<b>1.133</b> 28.8	-	<b>1.496</b> 38.0
20ESRMC2	<b>1.377</b> 35.0	<b>.921</b> 23.4	<b>1.06</b> 27.0	-	-
20ESRM-3	<b>2.087</b> 53.0	<b>1.653</b> 42.0	<b>.999</b> 25.4	-	<b>1.318</b> 33.5