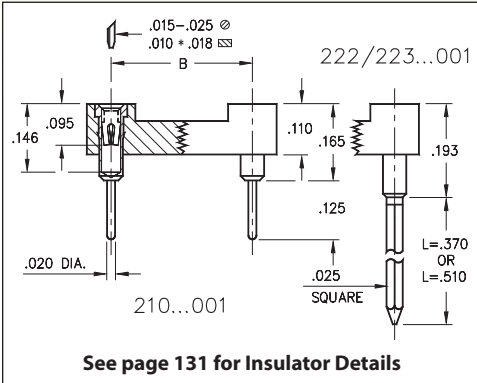
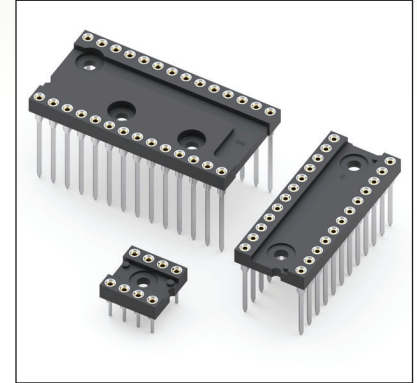


# DUAL-IN-LINE SOCKETS

## SERIES 210, 222, 223 • SOLDER TAIL AND WRAPOST • CLOSED FRAME



- Closed frame insulator withstands high mechanical impact
- Available with standard solder pins, 2-level or 3-level wraposts
- Hi-Rel, 4-finger BeCu #30 contact is rated at 3 amps. See page 253 for details
- Series 210, 222 and 223 use MM #1001, #0088 or #0089 pins. See pages 165 & 198 for details
- Insulators are high temperature thermoplastic, suitable for all soldering operations
- For Electrical, Mechanical and Environmental Data, see page 264 for details



Total number of pins				Quantity per tube	ORDERING INFORMATION								
	A	B	C		Solder Tail	L = .370 (2 Level Wrapost)	L = .510 (3 Level Wrapost)						
6	0.3	0.3	0.4	67	210-XX-306-41-001000	222-XX-306-41-001000	223-XX-306-41-001000						
8	0.4	0.3	0.4	50	210-XX-308-41-001000	222-XX-308-41-001000	223-XX-308-41-001000						
10	0.5	0.3	0.4	40	210-XX-310-41-001000	222-XX-310-41-001000	223-XX-310-41-001000						
14	0.7	0.3	0.4	28	210-XX-314-41-001000	222-XX-314-41-001000	223-XX-314-41-001000						
16	0.8	0.3	0.4	25	210-XX-316-41-001000	222-XX-316-41-001000	223-XX-316-41-001000						
18	0.9	0.3	0.4	22	210-XX-318-41-001000	222-XX-318-41-001000	223-XX-318-41-001000						
20	1.0	0.3	0.4	20	210-XX-320-41-001000	222-XX-320-41-001000	223-XX-320-41-001000						
22	1.1	0.3	0.4	18	210-XX-322-41-001000	222-XX-322-41-001000	223-XX-322-41-001000						
24	1.2	0.3	0.4	16	210-XX-324-41-001000	222-XX-324-41-001000	223-XX-324-41-001000						
22	1.1	0.4	0.5	18	210-XX-422-41-001000	222-XX-422-41-001000	223-XX-422-41-001000						
24	1.2	0.4	0.5	16	210-XX-424-41-001000	222-XX-424-41-001000	223-XX-424-41-001000						
24	1.2	0.6	0.7	16	210-XX-624-41-001000	222-XX-624-41-001000	223-XX-624-41-001000						
28	1.4	0.6	0.7	14	210-XX-628-41-001000	222-XX-628-41-001000	223-XX-628-41-001000						
32	1.6	0.6	0.7	12	210-XX-632-41-001000	222-XX-632-41-001000	223-XX-632-41-001000						
36	1.8	0.6	0.7	11	210-XX-636-41-001000	222-XX-636-41-001000	223-XX-636-41-001000						
40	2.0	0.6	0.7	10	210-XX-640-41-001000	222-XX-640-41-001000	223-XX-640-41-001000						
64	3.2	0.9	1.0	6	210-XX-964-41-001000	222-XX-964-41-001000	223-XX-964-41-001000						
<b>SPECIFY PLATING CODE XX =</b>					11	13	91	93	99	41	43	44	47
Sleeve (Pin)					10 μ" Au	10 μ" Au	200 μ" Sn/Pb	200 μ" Sn/Pb	200 μ" Sn/Pb	200 μ" Sn	200 μ" Sn	200 μ" Sn	200 μ" Sn
Contact (Clip)					10 μ" Au	30 μ" Au	10 μ" Au	30 μ" Au	100 μ" Sn/Pb	10 μ" Au	30 μ" Au	100 μ" Sn	Au Flash



## Mill-Max:

223-13-316-41-001000 210-99-964-41-001000 210-99-640-41-001000 210-99-632-41-001000 210-99-628-41-001000 210-99-624-41-001000 210-99-324-41-001000 210-99-320-41-001000 210-99-316-41-001000 210-99-314-41-001000 210-99-308-41-001000 210-93-964-41-001000 210-93-636-41-001000 210-93-424-41-001000 210-93-422-41-001000 210-93-322-41-001000 210-93-320-41-001000 210-93-318-41-001000 210-93-310-41-001000 210-93-306-41-001000 210-13-964-41-001000 210-13-636-41-001000 210-13-632-41-001000 210-13-628-41-001000 210-13-624-41-001000 210-13-424-41-001000 210-13-422-41-001000 210-13-324-41-001000 210-13-322-41-001000 210-13-320-41-001000 210-13-318-41-001000 210-13-316-41-001000 210-13-314-41-001000 210-13-310-41-001000 210-13-308-41-001000 210-13-306-41-001000 222-93-306-41-001000 222-93-316-41-001000 210-43-640-41-001000 210-43-632-41-001000 210-43-628-41-001000 210-43-624-41-001000 210-43-324-41-001000 210-43-316-41-001000 210-43-314-41-001000 210-43-308-41-001000 210-93-324-41-001000 210-93-632-41-001000 210-93-308-41-001000 210-13-640-41-001000 210-93-640-41-001000 210-93-314-41-001000 210-93-628-41-001000 210-93-316-41-001000 210-93-624-41-001000 210-44-964-41-001000 210-44-640-41-001000 210-44-632-41-001000 210-44-628-41-001000 210-44-624-41-001000 210-44-324-41-001000 210-44-320-41-001000 210-44-316-41-001000 210-44-314-41-001000 210-44-308-41-001000 210-43-964-41-001000 210-43-636-41-001000 210-43-424-41-001000 210-43-422-41-001000 210-43-322-41-001000 210-43-320-41-001000 210-43-318-41-001000 210-43-310-41-001000 210-43-306-41-001000 210-44-306-41-001000 210-99-306-41-001000 210-83-314-41-101000 210-41-422-41-001000 210-88-306-41-101000 210-91-322-41-001000 210-11-632-41-001000 210-88-636-41-101000 210-11-318-41-001000 210-91-424-41-001000 210-11-324-41-001000 210-41-310-41-001000 210-91-632-41-001000 210-11-964-41-001000 210-33-318-41-101000 210-88-316-41-101000 210-11-320-41-001000 210-88-318-41-101000 210-83-316-41-101000 210-88-422-41-101000 210-83-320-41-101000 210-41-628-41-001000 210-41-306-41-001000 210-41-632-41-001000 210-91-308-41-001000 210-91-624-41-001000