

IEC Appliance Inlet C8, Screw-on Mounting, Front Side, Solder or Quick-connect or Print Terminal



C8



70 °C

**Description**

- Panel Mount:  
Screw-on mounting, front or rear-side
- Appliance Inlet, Pin temperature 70 °C, Protection class II

**Approvals**

- VDE License Number: 40002274
- UL License Number: E96454
- CSA License Number: 27324

**References**

[General Product Information](#)

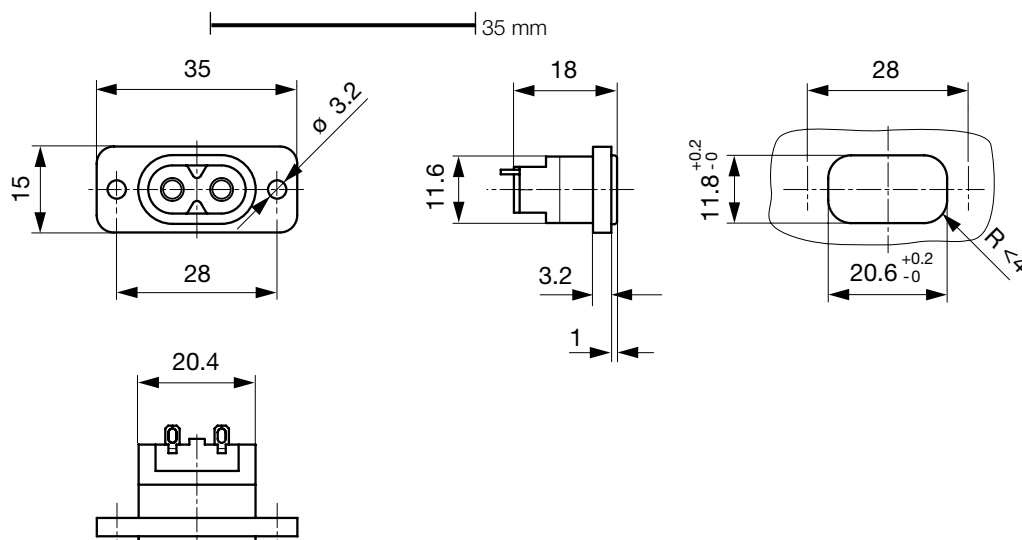
**Weblinks**

[Approvals](#), [RoHS](#), [CHINA-RoHS](#), [Mating Connectors](#), [Distributor-Stock-Check](#), [Accessories](#)

**Technical Data**

|                           |   |
|---------------------------|---|
| Ratings IEC               | 2.5 A / 250 VAC; 50 Hz  |
| Ratings UL/CSA            | 2.5 A / 250 VAC; 60 Hz  |
| Dielectric Strength       | > 4 kVAC between L-N<br>> 2 kVAC between L/N-PE<br>(1 min/50 Hz)  |
| Allowable Operation Temp. | -25 °C to 70 °C   |
| Degree of Protection      | from front side IP 20 acc. to IEC 60529                           |
| Protection Class          | Suitable for appliances with protection class 2 acc. to IEC 61140 |
| Panel Thickness s         | Screw<br>Mounting screw torque max 0 Nm                           |
| Material: Housing         | UL 94V-0  |

|                 |  |
|-----------------|--|
| Appliance Inlet | C8 acc. to IEC/EN 60320-1<br>UL 498, CSA C22.2 no. 42 (for cold conditions) pin-temperature 70 °C, 2.5 A, Protection Class 2 |
|-----------------|--|

**Dimensions**

length of the terminal please find at the order code configuration table

## Config. Code

Product Configurator

2576 - H - A B C 0 - D - E G F


The characters are placeholders for the correspondingly keys of selections from the key tables.

## 2576 - H - A B C 0 - D - E G F = Type

| Type               | Configuration key |
|--------------------|-------------------|
| protection class 2 | B                 |

## 2576 - H - A B C 0 - D - E G F = Terminals

| Terminal L                      | Configuration key |
|---------------------------------|-------------------|
| short solder terminal (L=4,8mm) | 2                 |
| long solder terminal (L=8,5mm)  | 3                 |
| PCB-terminal (short)            | 5                 |
| PCB-terminal (long)             | 6                 |
| blade terminal (2,8x0,8mm)      | 7                 |



## 2576 - H - A B C 0 - D - E G F = Terminals

| Terminal N                      | Configuration key |
|---------------------------------|-------------------|
| short solder terminal (L=4,8mm) | 2                 |
| long solder terminal (L=8,5mm)  | 3                 |
| PCB-terminal (short)            | 5                 |
| PCB-terminal (long)             | 6                 |
| blade terminal (2,8x0,8mm)      | 7                 |

Symbols similar as in table A

## 2576 - H - A B C 0 - D - E G F = Terminals

| Terminal Ground  | Configuration key |
|------------------|-------------------|
| without terminal | 0                 |

Symbols similar as in table A

## 2576 - H - A B C 0 - D - E G F = Color

| Color                | Configuration key |
|----------------------|-------------------|
| jet black; RAL9005   | A                 |
| silver grey; RAL7001 | B                 |
| pure white; RAL9010  | D                 |

standard color: black

## 2576 - H - A B C 0 - D - E G F = Style

| Style                     | Configuration key |
|---------------------------|-------------------|
| flange with through holes | 2                 |

## 2576 - H - A B C 0 - D - E G F = Dimension X

| Dimension "X" | Configuration key |
|---------------|-------------------|
| 00            |                   |

The dimension "X" is displayed in ( $1/_{10}$  mm). This information is also valid for the order code

## 2576 - H - A B C 0 - D - E G F = Orientation of Terminals

| Orientation of Terminals | Configuration key |
|--------------------------|-------------------|
| horizontal               | A                 |
| vertical                 | B                 |

## Variants

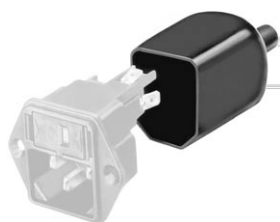
| Config. Code       | Description  | Order Number |
|--------------------|--|--------------|
| 2576-X-2200-A-200A | 2576, IEC Appliance Inlet C8, 70°C, Schutzklasse 2, L: short solder terminal (L=4,8mm), N: short solder terminal (L=4,8mm), Erde: without terminal, Farbe jet black; RAL9005, Bauform: flange with through holes, Mass X: 00 | 6160.0021    |
| 2576-X-7700-A-200A | 2576, IEC Appliance Inlet C8, 70°C, Schutzklasse 2, L: blade terminal (2,8x0,8mm), N: blade terminal (2,8x0,8mm), Erde: without terminal, Farbe jet black; RAL9005, Bauform: flange with through holes, Mass X: 00           | 6160.0022    |
| 2576-X-7700-A-200B | 2576, IEC Appliance Inlet C8, 70°C, Schutzklasse 2, L: blade terminal (2,8x0,8mm), N: blade terminal (2,8x0,8mm), Erde: without terminal, Farbe jet black; RAL9005, Bauform: flange with through holes, Mass X: 00           | 6160.0023    |
| 2576-X-3300-A-200B | 2576, IEC Appliance Inlet C8, 70°C, Schutzklasse 2, L: long solder terminal (L=8,5mm), N: long solder terminal (L=8,5mm), Erde: without terminal, Farbe jet black; RAL9005, Bauform: flange with through holes, Mass X: 00   | 6160.0028    |

The listed variants should be available from stock. Other versions on request [www.schurter.com/contact](http://www.schurter.com/contact)

Packaging unit 100 Pcs

## Accessories

### Description



Assorted Covers  
Rear Cover

## Mating Outlets/Connectors

### Category / Description

[Power Cord Overview complete](#)



|   |      |
|---|------|
| Power Cord with IEC Connector C7, Straight 70°C | 2510 |
| Power Cord with IEC Connector C7, Angled        | 2511 |
| Power Cord with IEC Plug C7, Angled             | 2514 |
| Power Cord with IEC Connector C7, Straight 70°C | 4810 |

[Power Cord further types to 2576](#)