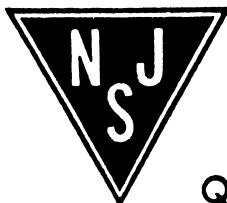
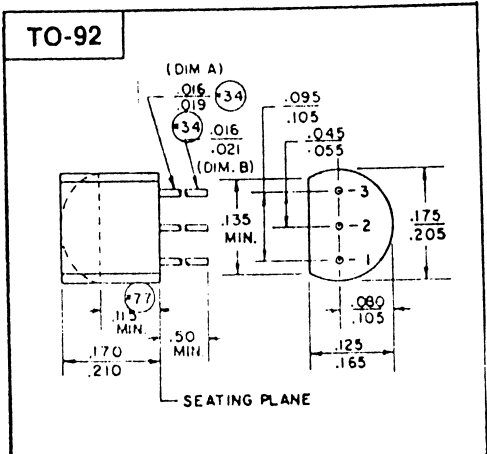


### N-Channel JFETs

Type No.	Case Style	BV <sub>GSS</sub> (V) @ I <sub>G</sub>		I <sub>GSS</sub> (nA) @ V <sub>DG</sub>		V <sub>p</sub> @ V <sub>DS</sub>			I <sub>DSS</sub> (mA) @ V <sub>DS</sub>			R <sub>e</sub> Y <sub>fs</sub> (mmho) @ Freq		R <sub>o</sub> (Y <sub>os</sub> ) (μmho) @ f			C <sub>iss</sub> (pF) @ V <sub>DS</sub> V <sub>GS</sub>			C <sub>rss</sub> (pF) @ V <sub>DS</sub> V <sub>GS</sub>			NF (dB) @ R <sub>G</sub> = 1k Freq		
		Min	Max	Min	Max	Min	Max	I <sub>D</sub> (nA)	Min	Max	V <sub>DS</sub> (V)	Min	Max	Min	Max	Max	Max	Max	Max	Max	Max	Max	Max	Max	Max
2N3819	TO-92	25	1	2	15	8	15	2	2	20	15	1.6	100			8	15	0	-4	15	0			2.5	100
2N3823	TO-72	30	1	0.5	20	8	15	0.5	4	20	15	3.2	200	200	200	6	15	0	-2	15	0			5	200
2N4223	TO-72	30	10	0.25	20	0.1	8	15	3	18	15	2.7	200	200	200	6	15	0	-2	15	0				
2N4224	TO-72	30	10	0.5	20	0.1	8	15	2	20	15	1.7	200	200	200	6	15	0	2	15	0			4	400
2N4416	TO-72	30	1	0.1	20	6	15	1	5	15	15	4	400	100	400	4	15	0	0.8	15	0			4	400
2N4416A	TO-72	35	1	0.1	20	2.5	6	15	5	15	15	4	400	100	400	4	15	0	0.8	15	0			3	200
2N5078	TO-72	30	1	0.25	20	0.5	8	15	4	25	15	4	200	150	200	6	15	0	2	15	0			4	400
2N5245	TO-92	30	1	1	20	1	6	15	5	15	15	4	400	100	400	4.5	15	0	1	15	0				
2N5246	TO-92	30	1	1	20	0.5	4	15	1.5	7	15	2.5	400	100	400	4.5	15	0	1	15	0				
2N5247	TO-92	30	1	1	20	1.5	8	15	8	24	15	4	400	150	400	4.5	15	0	1	15	0				
2N5248	TO-92	30	1	5	20	1	8	15	4	20	15	3	200	200	200	6	15	0	2	15	0				
2N5397	TO-72	25	1	0.1	15	1	6	10	10	30	10	5.5	450	200	450	5	10	10 mA	1.2	10	10 mA			3.5	450
2N5398	TO-72	25	1	0.1	15	1	6	10	5	40	10	5.0	450	400	450	5.5	10	0	1.3	10	0			3.2	450
2N5484	TO-92	25	1	1	20	0.3	3	15	1	5	15	2.5	100	75	100	5	15	0	1	15	0			4	400
2N5485	TO-92	25	1	1	20	1	4	15	4	10	15	3	400	100	400	5	15	0	1	15	0			4	400
2N5486	TO-92	25	1	1	20	2	6	15	8	20	15	3.5	400	100	400	5	15	0	1	15	0			2.5	100
2N5668	TO-92	25	10	2	15	0.2	4	14	1	5	15	1	100	50	100	7	15	0	3	15	0			2.5	100
2N5669	TO-92	25	10	2	15	1	6	15	4	10	15	1.6	100	100	100	7	15	0	3	15	0			2.5	100
2N5670	TO-92	25	10	2	15	2	8	15	8	20	15	2.5	100	150	100	7	15	0	3	15	0			2.5	100
2N5949	TO-92	300	1	1	15	3	7	15	12	18	15	3.0	100	75	100	6	15	0	2	15	0			5	100
2N5950	TO-92	30	1	1	15	2.5	6	15	10	15	15	3.0	100	75	100	6	15	0	2	15	0			5	100
2N5951	TO-92	30	1	1	15	2	5	15	7	13	15	3.0	100	75	100	6	15	0	2	15	0			5	100
2N5952	TO-92	30	1	1	15	1.3	3.5	15	4	8	15	1.0	100	75	100	6	15	0	2	15	0			5	100
2N5953	TO-92	30	1	1	15	0.8	3	15	2.5	5	15	1.0	100	50	100	6	15	0	2	15	0			5	100
J300	TO-92	25	1	0.5	15	1	6	10	6	30	10	4.5	0.001	200	0.001	5.5	10	5 mA	1.7	10	5 mA			14	400
J304	TO-92	30	1	0.1	20	2	6	15	5	15	15	14.2	400	180	100	13	15	0	1.8	15	0			14	400
J305	TO-92	30	1	0.1	20	0.5	3	15	1	8	15	13.0	400	180	100	13	15	0	1.8	15	0			14	400
J308	TO-92	25	1	1	15	1	6.5	10	12	60	10	8	0.001	200	0.001	7.5	0	-10	2.5	0	-10			11.5	100
J309	TO-92	25	1	1	15	1	4.0	10	12	30	10	10	0.001	200	0.001	7.5	0	-10	2.5	0	-10			11.5	100
J310	TO-92	25	1	1	15	2	6.5	10	24	60	10	8	0.001	200	0.001	7.5	0	-10	2.5	0	-10			11.5	100



Quality Semi-Conductors