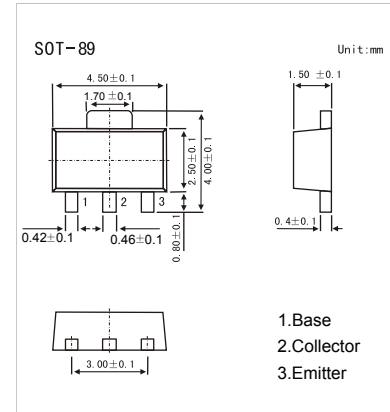


## PNP Transistors

## 2SA1483

## ■ Features

- High transition frequency
- Low collector output capacitance
- Complementary to 2SC3803

■ Absolute Maximum Ratings  $T_a = 25^\circ\text{C}$ 

Parameter	Symbol	Rating	Unit
Collector - Base Voltage	$V_{CB0}$	-60	V
Collector - Emitter Voltage	$V_{CE0}$	-45	
Emitter - Base Voltage	$V_{EB0}$	-5	
Collector Current - Continuous	$I_C$	-200	mA
Base Current	$I_B$	-50	
Collector Power Dissipation	$P_C$	500	mW
Junction Temperature	$T_J$	150	$^\circ\text{C}$
Storage Temperature range	$T_{stg}$	-55 to 150	

■ Electrical Characteristics  $T_a = 25^\circ\text{C}$ 

Parameter	Symbol	Test Conditions	Min	Typ	Max	Unit
Collector- base breakdown voltage	$V_{CB0}$	$I_C = -100 \mu\text{A}, I_E = 0$	-60			V
Collector- emitter breakdown voltage	$V_{CE0}$	$I_C = -0.5 \text{ mA}, I_B = 0$	-45			
Emitter - base breakdown voltage	$V_{EB0}$	$I_E = -100 \mu\text{A}, I_C = 0$	-5			
Collector-base cut-off current	$I_{CBO}$	$V_{CB} = -45 \text{ V}, I_E = 0$			-0.1	$\mu\text{A}$
Emitter cut-off current	$I_{EBO}$	$V_{EB} = -5 \text{ V}, I_C = 0$			-0.1	
Collector-emitter saturation voltage	$V_{CE(sat)}$	$I_C = -100 \text{ mA}, I_B = -10 \text{ mA}$			-0.3	V
Base - emitter saturation voltage	$V_{BE(sat)}$	$I_C = -100 \text{ mA}, I_B = -10 \text{ mA}$			-1	
Input impedance (real part)	$R_{e(hie)}$	$V_{CB} = -10 \text{ V}, I_E = 10 \text{ mA}, f = 200 \text{ MHz}$			120	$\Omega$
DC current gain	$h_{FE}$	$V_{CE} = -1 \text{ V}, I_C = -10 \text{ mA}$	40		240	
		$V_{CE} = -3 \text{ V}, I_C = -200 \text{ mA}$	20			
Turn-on time	$t_{on}$	See Test Circuit.		40		ns
Storage time	$t_{stg}$			250		
Fall time	$t_f$			30		
Collector output capacitance	$C_{ob}$	$V_{CB} = -10 \text{ V}, I_E = 0, f = 1 \text{ MHz}$		3.5	5	$\mu\text{F}$
Transition frequency	$f_T$	$V_{CE} = -10 \text{ V}, I_C = -10 \text{ mA}$	100	200		MHz

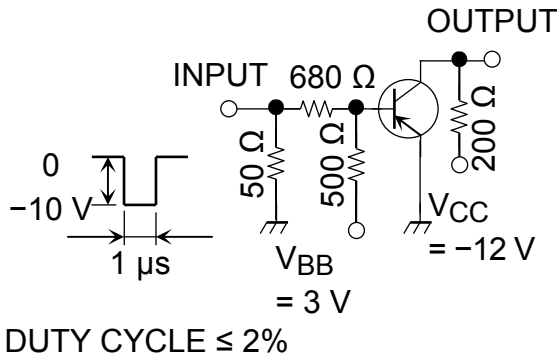
■ Classification of  $h_{FE(1)}$ 

Type	2SA1483-R	2SA1483-O	2SA1483-Y
Range	40-80	70-140	120-240
Marking	WR*	WO*	WY*

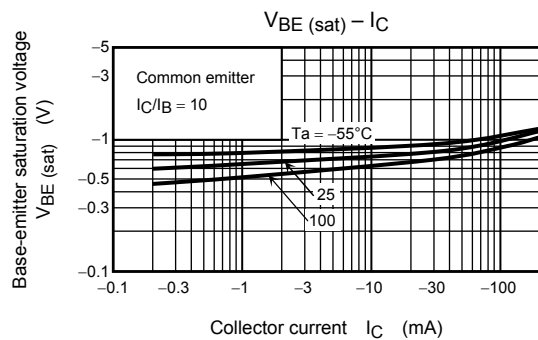
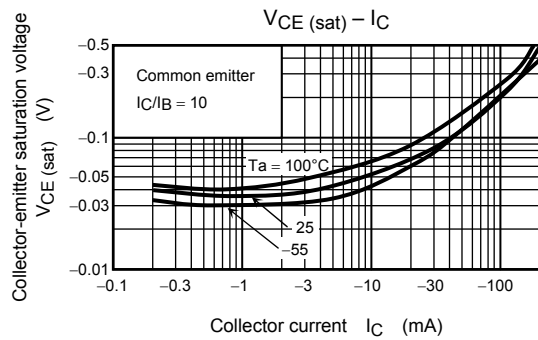
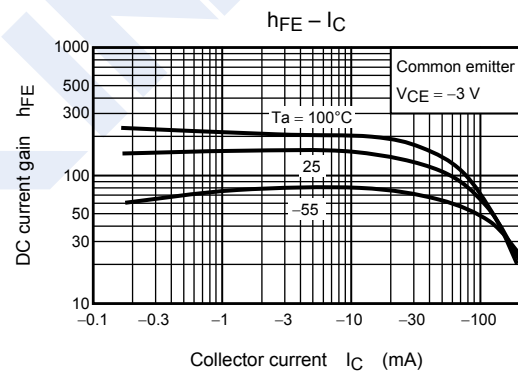
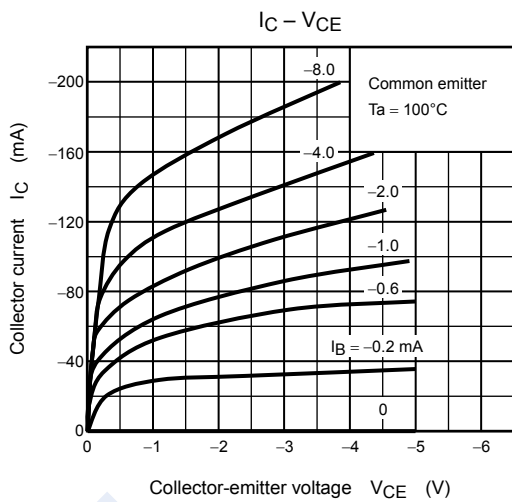
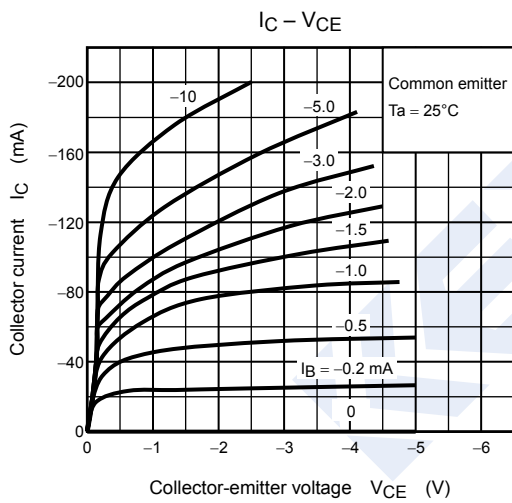
### PNP Transistors

### 2SA1483

#### Switching Time Test Circuit



#### Typical Characteristics



## PNP Transistors

## 2SA1483

## ■ Typical Characteristics

