

RoHS Compliant Product

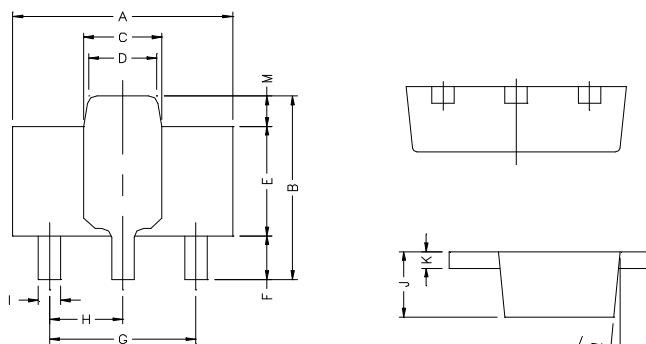
SOT-89

### Description

The 2SC4672 is designed for low frequency amplifier applications.

### Features

- \* Excellent DC Current Gain Characteristics
- \* Low Saturation Voltage, Typically  $V_{CE(SAT)}=0.1V$   
At  $I_C/I_B=1A/50mA$



REF.	Millimeter		REF.	Millimeter	
	Min.	Max.		Min.	Max.
A	4.4	4.6	G	3.00	REF.
B	4.05	4.25	H	1.50	REF.
C	1.50	1.70	I	0.40	0.52
D	1.30	1.50	J	1.40	1.60
E	2.40	2.60	K	0.35	0.41
F	0.89	1.20	L	5° TYP.	
			M	0.70 REF.	

### Absolute Maximum Ratings at $T_A=25^{\circ}C$

Symbol	Parameter	Value	Units
$V_{CBO}$	Collector-Base Voltage	60	V
$V_{CEO}$	Collector-Emitter Voltage	50	V
$V_{EBO}$	Emitter-Base Voltage	6	V
$I_C$	Collector Current (DC)	2	A
	Collector Current (Pulse)	5	
$P_D$	Total Power Dissipation	2	W
$T_J, T_{stg}$	Junction and Storage Temperature	-55~+150	$^{\circ}C$

### ELECTRICAL CHARACTERISTICS $T_{amb}=25^{\circ}C$ unless otherwise specified

Parameter	Symbol	Min	Typ.	Max	Unit	Test Conditions
Collector-Base Breakdown Voltage	$BV_{CBO}$	60	-	-	V	$I_C=50\mu A, I_E=0$
Collector-Emitter Breakdown Voltage	$BV_{CEO}$	50	-	-	V	$I_C=1mA, I_B=0$
Emitter-Base Breakdown Voltage	$BV_{EBO}$	6	-	-	V	$I_E=50\mu A, I_C=0$
Collector-Base Cutoff Current	$I_{CBO}$	-	-	100	nA	$V_{CB}=60V, I_E=0$
Emitter-Base Cutoff Current	$I_{EBO}$	-	-	100	nA	$V_{EB}=5V, I_C=0$
Collector Saturation Voltage	$*V_{CE(sat)}$	-	0.1	0.35	V	$I_C=1A, I_B=50mA$
DC Current Gain	$*h_{FE}$	120	-	400		$V_{CE}=2V, I_C=500mA$
Gain-Bandwidth Product	fT	-	210	-	MHz	$V_{CE}=2V, I_C=500mA, f=100MHz$
Output Capacitance	$C_{ob}$	-	25	-	pF	$V_{CB}=10V, f=1MHz, I_E=0$

\*Measured under pulse condition. Pulse width  $\leq 380\mu s$ , Duty Cycle  $\leq 2\%$

### Classification of $h_{FE}$

Rank	A	B
Range	120~240	200~400

**Characteristics Curve**

