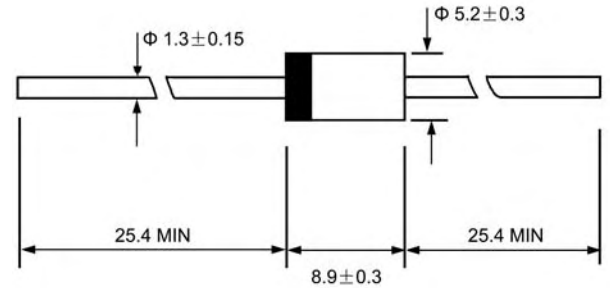


VOLTAGE RANGE: 100 --- 200 V

CURRENT: 1.6 A

DO - 27



Dimensions in millimeters

Features

- ◇ Low cost
- ◇ Diffused junction
- ◇ Low leakage
- ◇ Low forward voltage drop
- ◇ High current capability
- ◇ Easily cleaned with alcohol, isopropanol and similar solvents

Mechanical Data

- ◇ Case: JEDEC DO-27, molded plastic
- ◇ Polarity: Color band denotes cathode
- ◇ Weight: 0.041 ounces, 1.15 grams
- ◇ Mounting position: Any

MAXIMUM RATINGS AND ELECTRICAL CHARACTERISTICS

Ratings at 25°C ambient temperature unless otherwise specified.

Single phase, half wave, 50Hz, resistive or inductive load. For capacitive load, derate by 20%.

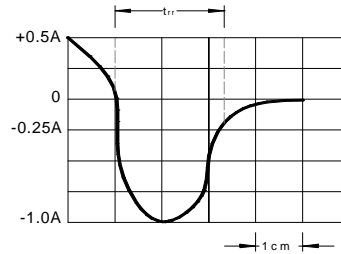
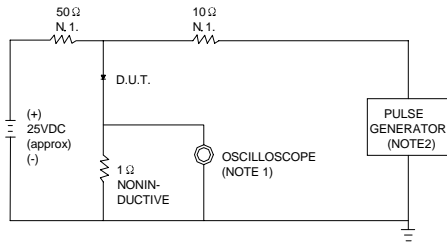
		31DF1	31DF2	UNITS
Maximum recurrent peak reverse voltage	V_{RRM}	100	200	V
Maximum RMS voltage	V_{RMS}	70	140	V
Maximum DC blocking voltage	V_{DC}	100	200	V
Maximum average forward rectified current 9.5mm lead length, @ $T_A=75^\circ C$	$I_{F(AV)}$	1.6		A
Peak forward surge current 10ms single half-sine-wave superimposed on rated load @ $T_J=125^\circ C$	I_{FSM}	125.0		A
Maximum instantaneous forward voltage @ $I_F=1.6A$	V_F	0.98		V
Maximum reverse current @ $T_A=25^\circ C$ at rated DC blocking voltage @ $T_A=100^\circ C$	I_R	5.0	50.0	μA
Maximum reverse recovery time (Note1)	t_{rr}	30		ns
Typical junction capacitance (Note2)	C_J	90		pF
Typical thermal resistance (Note3)	$R_{\theta JA}$	34		$^\circ C/W$
Operating junction temperature range	T_J	- 55 ----- + 150		$^\circ C$
Storage temperature range	T_{STG}	- 55 ----- + 150		$^\circ C$

NOTE: 1. Measured with $I_F=0.5A$, $I_R=1A$, $I_{rr}=0.25A$.

2. Measured at 1.0MHz and applied reverse voltage of 4.0V DC.

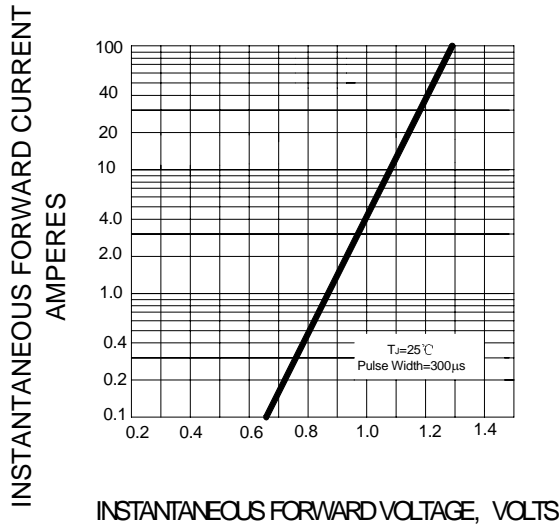
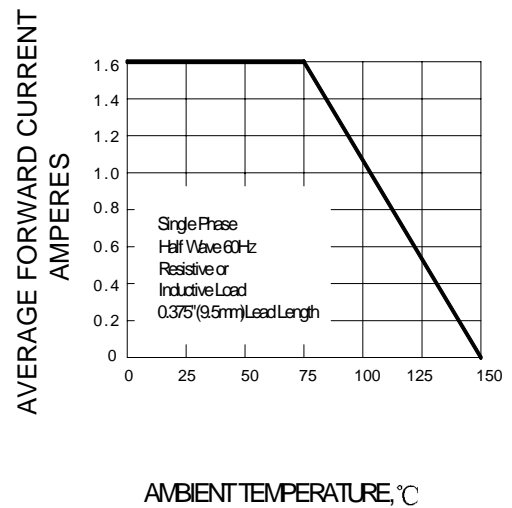
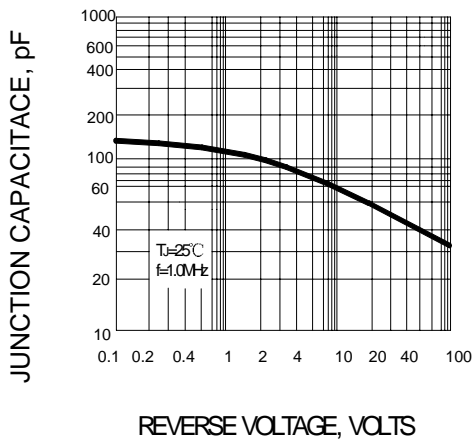
3. Thermal resistance from junction to ambient.

Ratings AND Characteristic Curves

FIG.1 – TEST CIRCUIT DIAGRAM AND REVERSE RECOVERY TIME CHARACTERISTIC


NOTES:1.RISE TIME = 7ns MAX INPUT IMPEDANCE = 1M Ω . 22pF.
2.RISE TIME = 10ns MAX SOURCE IMPEDANCE = 50 Ω .

SET TIME BASE FOR 10 ns/cm

FIG.2 – TYPICAL FORWARD CHARACTERISTIC

FIG.3 – FORWARD DERATING CURVE

FIG.4- TYPICAL JUNCTION CAPACITANCE

FIG.5- PEAK FORWARD SURGE CURRENT
