

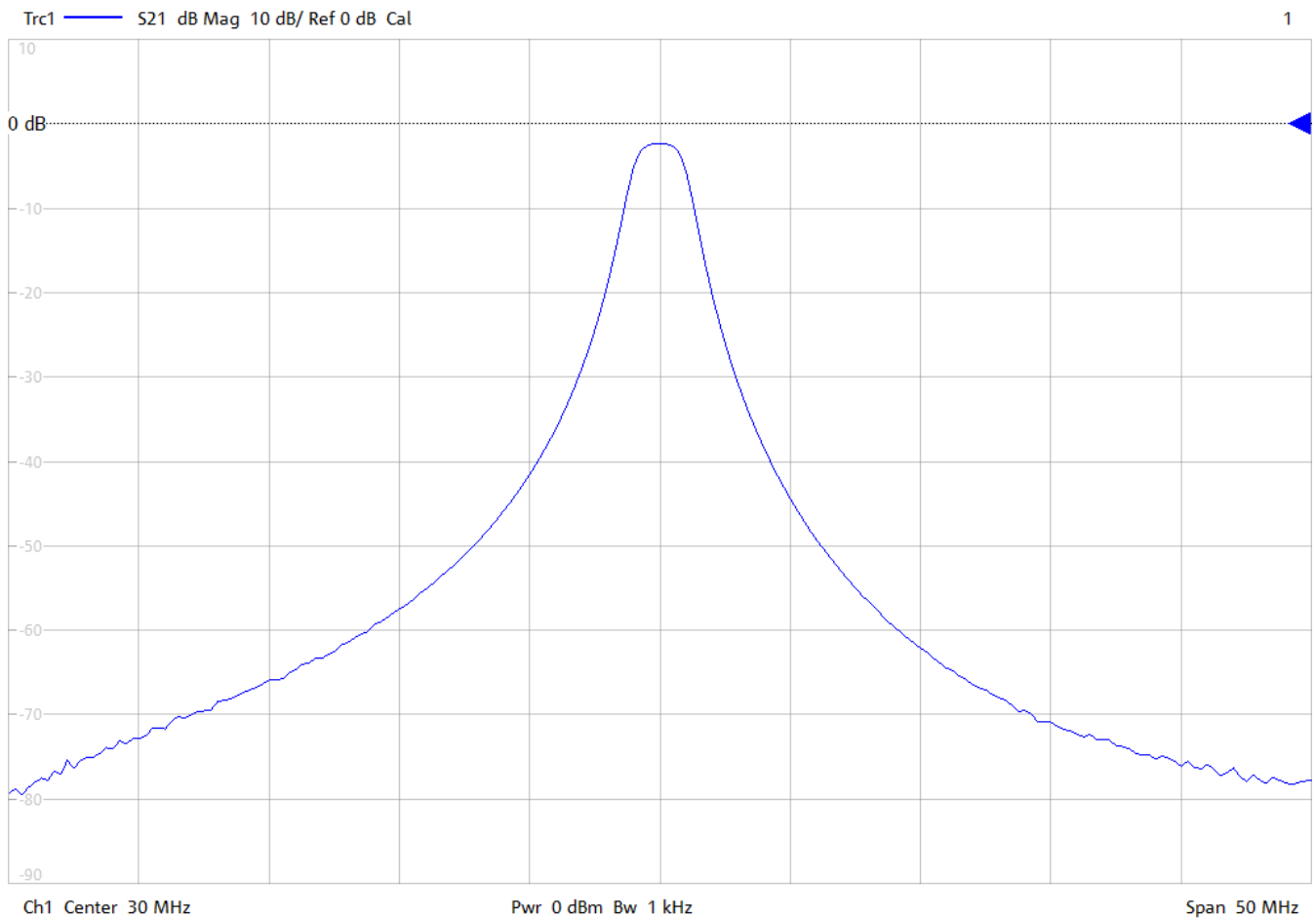
General Description

KR Electronics part number 3371-SMA is a 30 MHz Bandpass Filter. The filter has a 3 dB bandwidth of 2 MHz. Other frequencies are available. Please consult the factory.

Features

- Bandpass Filter
- 30 MHz Center Frequency
- 3 dB Bandwidth: 2 MHz
- 50 Ω Source and Load
- SMA Connectors
- Surface Mount also available
- Other frequencies available

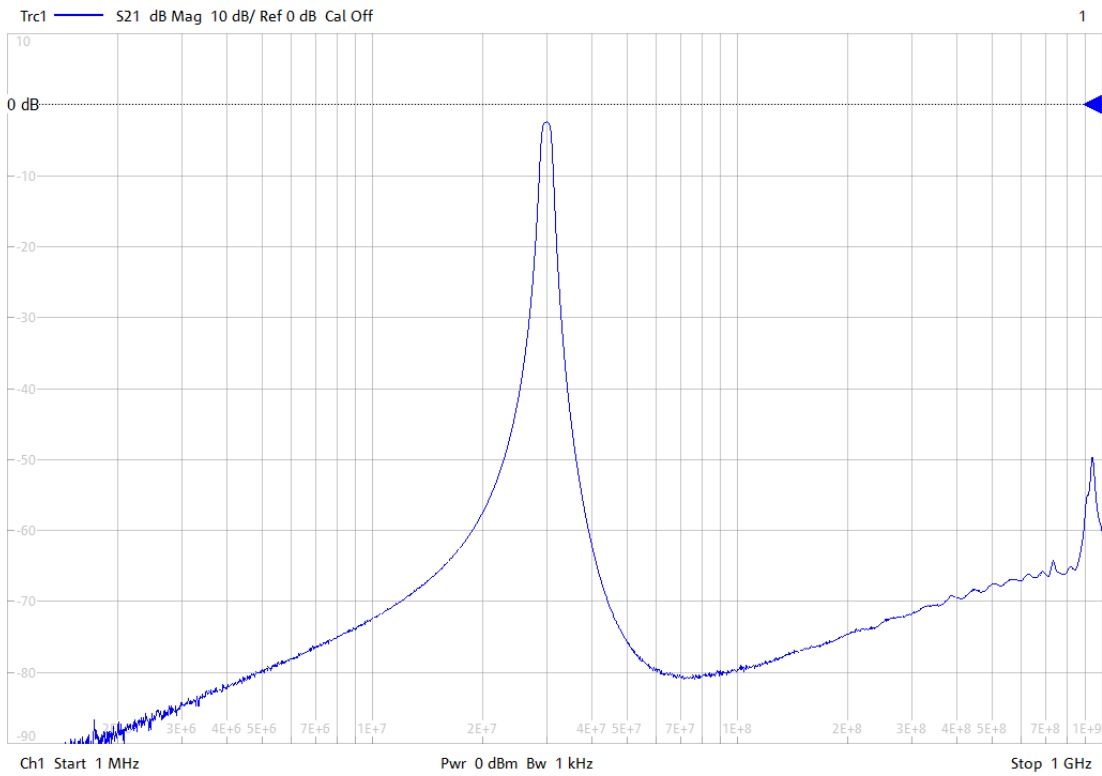
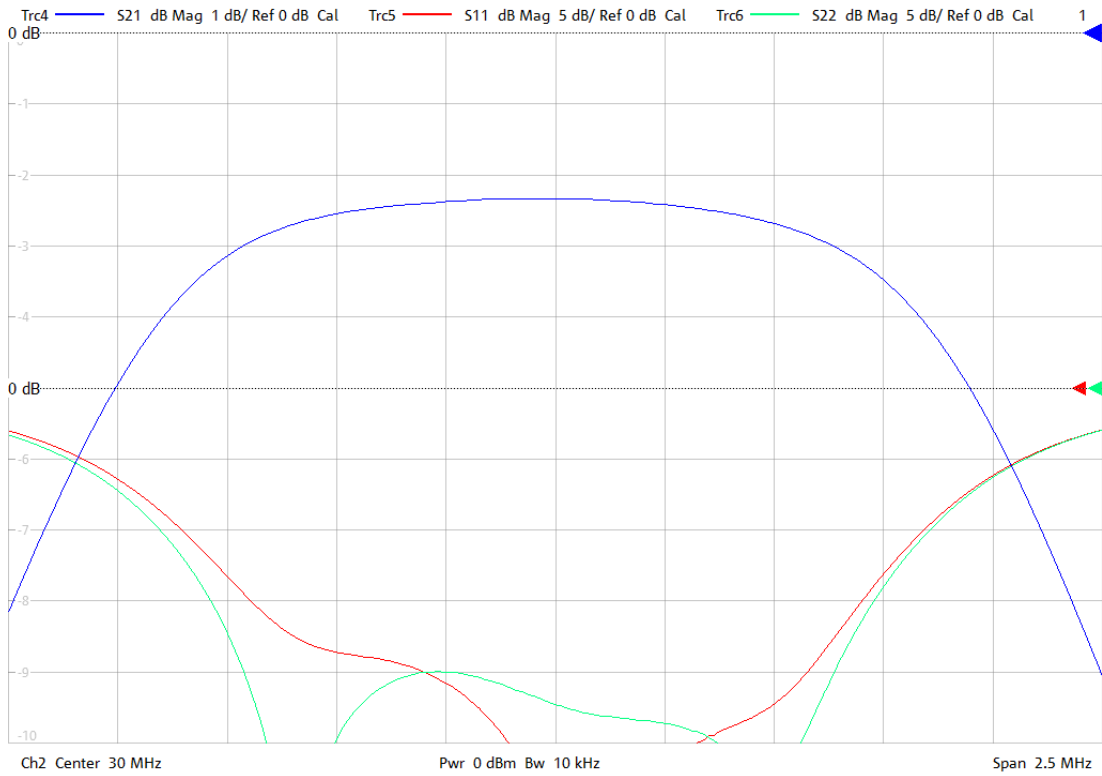
Typical Performance



KR Electronics, Inc.
91 Avenel Street
Avenel, NJ 07001

Web www.krfilters.com
Email sales@krfilters.com
Phone (732) 636-1900
Fax (732) 636-1982

KR Electronics 3371-SMA



KR Electronics, Inc.
91 Avenel Street
Avenel, NJ 07001

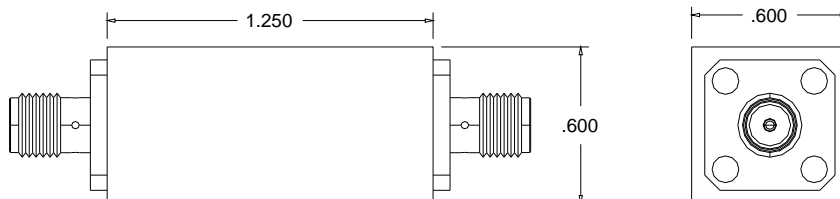
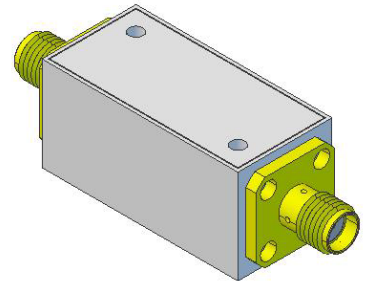
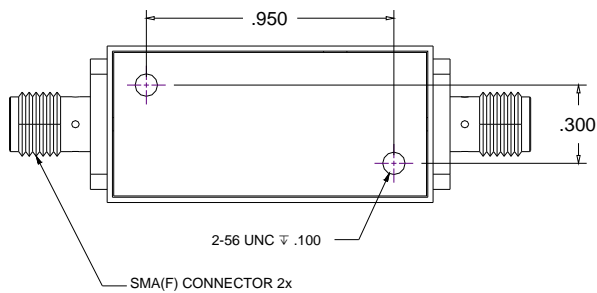
Web www.krfilters.com
Email sales@krfilters.com
Phone (732) 636-1900
Fax (732) 636-1982

KR Electronics 3371-SMA

Specifications

Parameter	Specification	
Filter type	Bandpass	
Frequency Band	30 MHz	
Insertion Loss at 30 MHz	4 dBa max	2.4 dBa typical
3 dBc Bandwidth	2 MHz \pm 10%	
20 dBc Bandwidth	4.5 MHz typical	
40 dBc Bandwidth	9.8 MHz typical	
60 dBc Bandwidth	22.6 MHz typical	
Source and Load	50 Ω	

Physical Dimensions



Notes:

1. Dimensions in inches
2. Metal Case
3. SMA(F) Connectors
4. Also available in surface mount package

KR Electronics, Inc.
91 Avenel Street
Avenel, NJ 07001

Web www.krfilters.com
Email sales@krfilters.com
Phone (732) 636-1900
Fax (732) 636-1982