

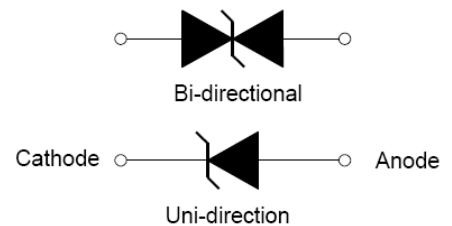


3KP Series 3000W Transient Voltage Suppressor

Rev.1.0

DESCRIPTION:

The 3KP series of high current uni/bi-directional transient suppressors are designed for A.C. line protection and high power DC bus clamping applications. These devices offer uni/bi-directional port protection from 5.0 volts to 220 volts. They provide a clamping voltage lower than the avalanche voltage. Therefore, any voltage rise due to increased current conduction is contained to a minimum, providing the best possible protection level. They can also be connected in series and/or parallel to create very high capacity protection solutions.



FEATURES:

- ✧ Low zener impedance.
- ✧ Excellent clamping capability.
- ✧ JEDEC R-6/P-600 Molded Plastic.
- ✧ Repetition rate (duty cycle): 0.01%.
- ✧ Color band denoted cathode except bidirectional.
- ✧ High temperature soldering: 260°C/10s at terminals.
- ✧ Glass passivated chip junction in R-6/P600 package.
- ✧ 3000W Peak Pulse power capability at 10×1000µs waveform.
- ✧ Fast response time: typically less than 1.0ps from 0V to V_{BR} min.

ABSOLUTE MAXIMUM RATINGS ($T_A=25^{\circ}C$, RH=45%-75%, unless otherwise noted)

Parameter	Symbol	Value	Unit
Peak pulse power dissipation on 10/1000µs waveform	P_{PP}	3000	W
Peak pulse current of on 10/1000µs waveform	I_{PP}	See next table	A
Steady state power dissipation at $T_L=75^{\circ}C$	$P_{M(AV)}$	6.5	W
Operating junction and Storage temperature range	T_{STG}, T_J	-55 to +125	°C
Peak forward surge current, 8.3ms single half sine-wave	I_{FSM}	300	A

ELECTRICAL CHARACTERISTICS ($T_A=25^{\circ}\text{C}$)

Part Number		V_R	$I_R@V_R$	$V_{BR}@I_T$		I_T	$V_C@I_{PP}$	$I_{PP}^{①}$
Uni-Polar	Bi-Polar	V	μA	min(V)	max(V)	mA	max(V)	A
3KP5.0A	3KP5.0CA	5.0	150	6.40	7.00	10	9.2	326.1
3KP6.0A	3KP6.0CA	6.0	100	6.67	7.37	10	10.3	291.3
3KP6.5A	3KP6.5CA	6.5	50	7.22	7.98	10	11.2	267.9
3KP7.0A	3KP7.0CA	7.0	20	7.78	8.60	10	12.0	250.0
3KP7.5A	3KP7.5CA	7.5	10	8.33	9.21	1	12.9	232.6
3KP8.0A	3KP8.0CA	8.0	10	8.89	9.83	1	13.6	220.6
3KP8.5A	3KP8.5CA	8.5	10	9.44	10.40	1	14.4	208.3
3KP9.0A	3KP9.0CA	9.0	10	10.00	11.10	1	15.4	194.8
3KP10A	3KP10CA	10.0	5	11.10	12.30	1	17.0	176.5
3KP11A	3KP11CA	11.0	5	12.20	13.50	1	18.2	164.8
3KP12A	3KP12CA	12.0	2	13.30	14.70	1	19.9	150.8
3KP13A	3KP13CA	13.0	2	14.40	15.90	1	21.5	139.5
3KP14A	3KP14CA	14.0	1	15.60	17.20	1	23.2	129.3
3KP15A	3KP15CA	15.0	1	16.70	18.50	1	24.4	123.0
3KP16A	3KP16CA	16.0	1	17.80	19.70	1	26.0	115.4
3KP17A	3KP17CA	17.0	1	18.90	20.90	1	27.6	108.7
3KP18A	3KP18CA	18.0	1	20.00	22.10	1	29.2	102.7
3KP20A	3KP20CA	20.0	1	22.20	24.50	1	32.4	92.6
3KP22A	3KP22CA	22.0	1	24.40	26.90	1	35.5	84.5
3KP24A	3KP24CA	24.0	1	26.70	29.50	1	38.9	77.1
3KP26A	3KP26CA	26.0	1	28.90	31.90	1	42.1	71.3
3KP28A	3KP28CA	28.0	1	31.10	34.40	1	45.4	66.1
3KP30A	3KP30CA	30.0	1	33.30	36.80	1	48.4	62.0
3KP33A	3KP33CA	33.0	1	36.70	40.60	1	53.3	56.3
3KP36A	3KP36CA	36.0	1	40.00	44.20	1	58.1	51.6
3KP40A	3KP40CA	40.0	1	44.40	49.10	1	64.5	46.5
3KP43A	3KP43CA	43.0	1	47.80	52.80	1	69.4	43.2
3KP45A	3KP45CA	45.0	1	50.00	55.30	1	72.7	41.3
3KP48A	3KP48CA	48.0	1	53.30	58.90	1	77.4	38.8
3KP51A	3KP51CA	51.0	1	56.70	62.70	1	82.4	36.4

ELECTRICAL CHARACTERISTICS ($T_A=25^{\circ}\text{C}$, continued)

Part Number		V_R	$I_R@V_R$	$V_{BR}@I_T$		I_T	$V_C@I_{PP}$	$I_{PP}^{①}$
Uni-Polar	Bi-Polar	V	μA	min(V)	max(V)	mA	max(V)	A
3KP54A	3KP54CA	54.0	1	60.00	66.30	1	87.1	34.4
3KP58A	3KP58CA	58.0	1	64.40	71.20	1	93.6	32.1
3KP60A	3KP60CA	60.0	1	66.70	73.70	1	96.8	31.0
3KP64A	3KP64CA	64.0	1	71.10	78.60	1	103.0	29.1
3KP70A	3KP70CA	70.0	1	77.80	86.00	1	113.0	26.5
3KP75A	3KP75CA	75.0	1	83.30	92.10	1	121.0	24.8
3KP78A	3KP78CA	78.0	1	86.70	95.80	1	126.0	23.8
3KP85A	3KP85CA	85.0	1	94.40	104.0	1	137.0	21.9
3KP90A	3KP90CA	90.0	1	100.0	111.0	1	146.0	20.5
3KP100A	3KP100CA	100.0	1	100.0	111.0	1	162.0	18.5
3KP110A	3KP110CA	110.0	1	111.0	123.0	1	177.0	16.9
3KP120A	3KP120CA	120.0	1	122.0	135.0	1	193.0	15.5
3KP130A	3KP130CA	130.0	1	133.0	147.0	1	209.0	14.4
3KP150A	3KP150CA	150.0	1	144.0	159.0	1	243.0	12.3
3KP160A	3KP160CA	160.0	1	167.0	185.0	1	259.0	11.6
3KP170A	3KP170CA	170.0	1	178.0	197.0	1	275.0	10.9
3KP180A	3KP180CA	180.0	1	189.0	209.0	1	292.0	10.3
3KP190A	3KP190CA	190.0	1	211.0	233.0	1	310.0	9.7
3KP200A	3KP200CA	200.0	1	224.0	247.0	1	329.2	9.3
3KP210A	3KP210CA	210.0	1	237.0	263.0	1	349.5	8.8
3KP220A	3KP220CA	220.0	1	246.0	272.0	1	371.1	8.4

① Surge waveform: 10/1000 μs V_R : Stand-off Voltage -- Maximum voltage that can be applied V_{BR} : Breakdown Voltage V_C : Clamping Voltage -- Peak voltage measured across the suppressor at a specified I_{pp} I_R : Reverse Leakage Current

RATINGS AND V-I CHARACTERISTICS CURVES ($T_A=25^{\circ}\text{C}$, unless otherwise noted)

FIG.1:V- I curve characteristics (Uni-directional)

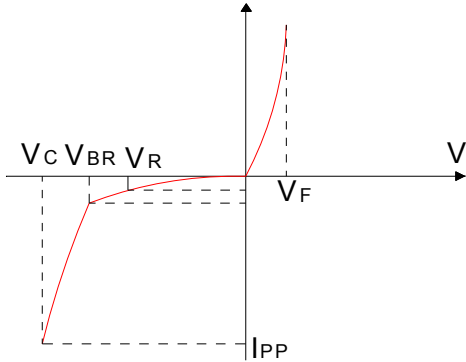


FIG.2:V- I curve characteristics (Bi-directional)

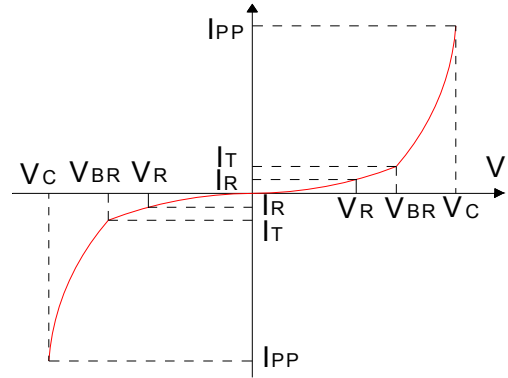


FIG.3: Pulse waveform

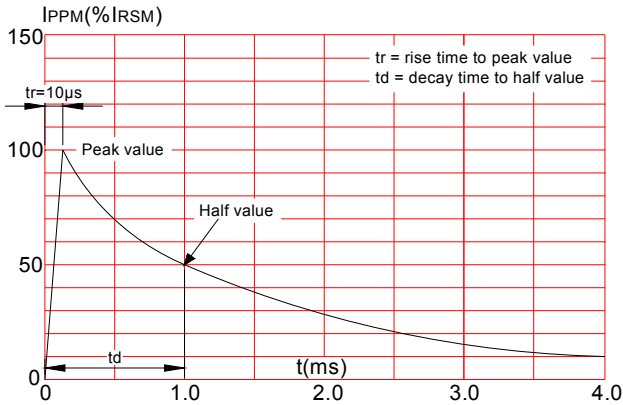
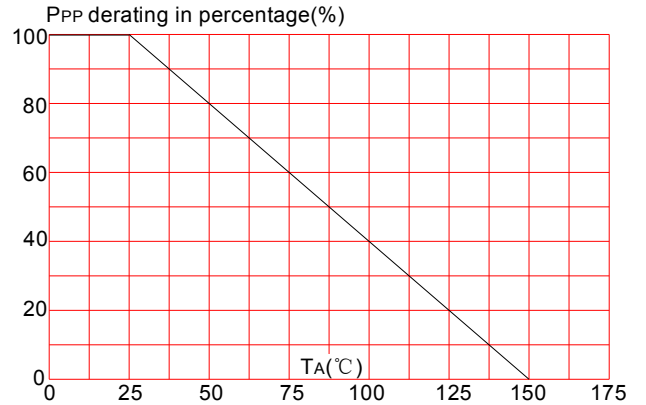
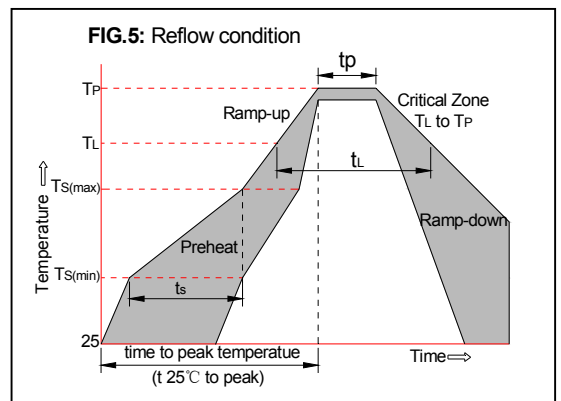


FIG.4: Pulse derating curve

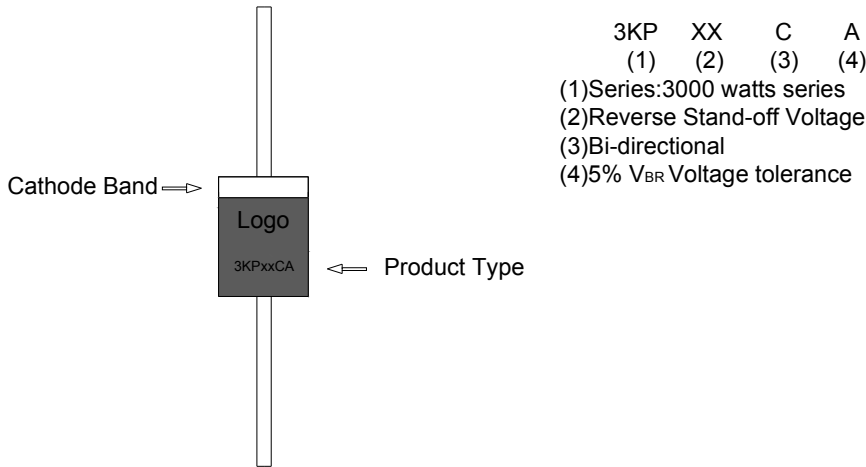


SOLDERING PARAMETERS

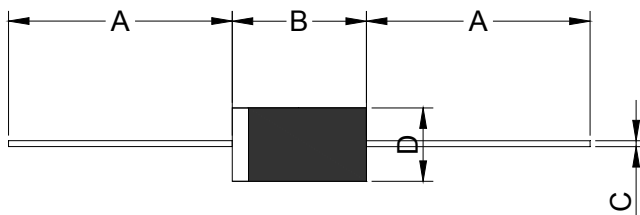
Reflow Condition		Pb-Free assembly (see FIG.5)
Pre Heat	-Temperature Min ($T_{s(min)}$)	+150°C
	-Temperature Max($T_{s(max)}$)	+200°C
	-Time (Min to Max) (t_s)	60-180 secs.
Average ramp up rate (Liquid us Temp (T_L) to peak)		3°C/sec. Max
$T_{s(max)}$ to T_L - Ramp-up Rate		3°C/sec. Max
Reflow	-Temperature(T_L)(Liquid us)	+217°C
	-Temperature(t_L)	60-150 secs.
Peak Temp (T_p)		+260(+0/-5)°C
Time within 5°C of actual Peak Temp (t_p)		30 secs. Max
Ramp-down Rate		6°C/sec. Max
Time 25°C to Peak Temp (T_p)		8 min. Max
Do not exceed		+260°C



MARKING & ORDERING INFORMATION



PACKAGE MECHANICAL DATA



Ref.	Dimensions			
	Inches		Millimeters	
	Min.	Max.	Min.	Max.
A	1.000	-	25.40	-
B	0.339	0.370	8.60	9.40
C	0.048	0.052	1.20	1.40
D	0.340	0.360	8.60	9.10

Part Number	Case Type	Quantity	Packing Option
3KPXXCA/A	R6/P600	300	Box

Information furnished in this document is believed to be accurate and reliable. However, Jiangsu JieJie Microelectronics Co.,Ltd assumes no responsibility for the consequences of use without consideration for such information nor use beyond it.

Information mentioned in this document is subject to change without notice, apart from that when an agreement is signed, Jiangsu JieJie complies with the agreement.

Products and information provided in this document have no infringement of patents. Jiangsu JieJie assumes no responsibility for any infringement of other rights of third parties which may result from the use of such products and information.

This document is the first version which is made in 22-May.-2015. This document supersedes and replaces all information previously supplied.

 is a registered trademark of Jiangsu JieJie Microelectronics Co.,Ltd.

Copyright ©2015 Jiangsu JieJie Microelectronics Co.,Ltd. Printed All rights reserved.