

# New Jersey Semi-Conductor Products, Inc.

20 STERN AVE.  
 SPRINGFIELD, NEW JERSEY 07081  
 U.S.A.

TELEPHONE: (973) 376-2922  
 (212) 227-8005  
 FAX: (973) 376-8860

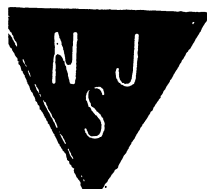
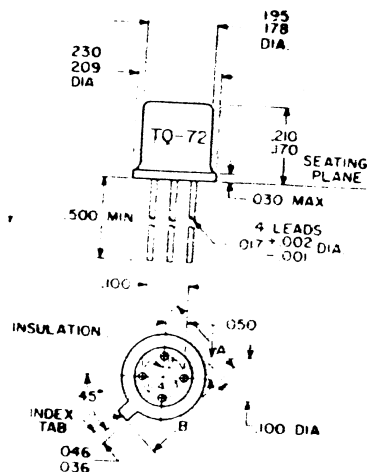
## PARAMETERS

3N187  
 N-CHANNEL, DUAL-GATE TETRODE MOSFET

Description: N-Channel, Dual-Gate Tetrode MOSFET

Manufacturer.....	
Mil/High-Rel? (Y/N).....	
Vbr DSS.....	20
Id Max. (A).....	50m
Max. PD (W).....	330m
Derate (Amb) (W/xC).....	2.2m
R(ds) On (j).....	
gfs Min.....	7.0m
gfs Max.....	18m
I(d) for G(fs).....	
Vp Max.....	4.0
Ciss Max. (F).....	
Ides Max. (A).....	
Tr Max. (s).....	
t(F) Max. (s).....	
Vbr GSS.....	20J
Oper. Temp (xC) Max.....	175 ~
Ed(on) Max (S).....	
t(stor) Max. (S).....	
Pkg Style.....	T0-72
Pinout Equivalence Number.....	4-59
Surface Mounted Yes/No.....	NO

~ Storage Temperature J BVD60 f Derating Begins at 50xC



NJ Semi-Conductors reserves the right to change test conditions, parameter limits and package dimensions without notice. Information furnished by NJ Semi-Conductors is believed to be both accurate and reliable at the time of going to press. However, NJ Semi-Conductors assumes no responsibility for any errors or omissions discovered in its use. NJ Semi-Conductors encourages customers to verify that datasheets are current before placing orders.