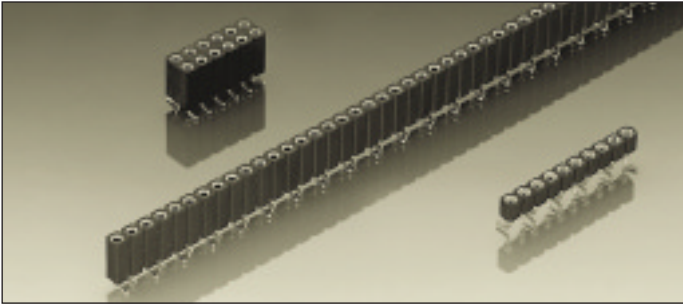


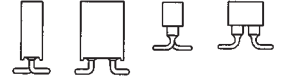
Series 800

PCB connectors 2.54 mm
Single row / double row
Surface mount



Receptacles, surface mount



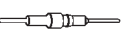
Accept square pins $\square 0.635$ mm
and round pins $\varnothing 0.70-0.80$ mm

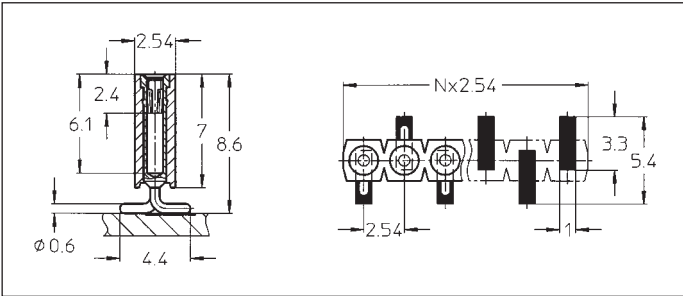


For corresponding pin connectors see
pages 30 to 35

Ordering information

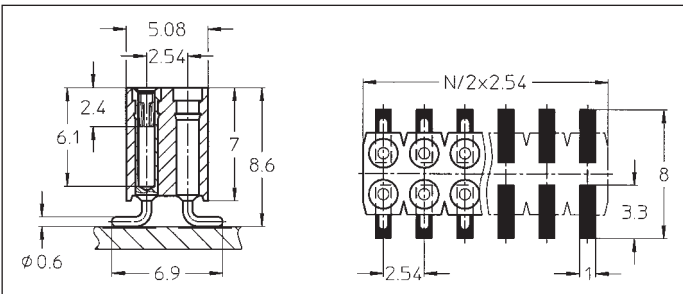
Replace **xxx** with the number of poles, e.g. 803-91-**xxx**-30-001
for a double row version with 8 pins per row becomes:
803-91-**016**-30-001

Platings	Sleeve 	Clip 	Pin 
91	5 μ m Sn Pb	0.25 μ m Au	
93	5 μ m Sn Pb	0.75 μ m Au	
99	5 μ m Sn Pb	5 μ m Sn Pb	



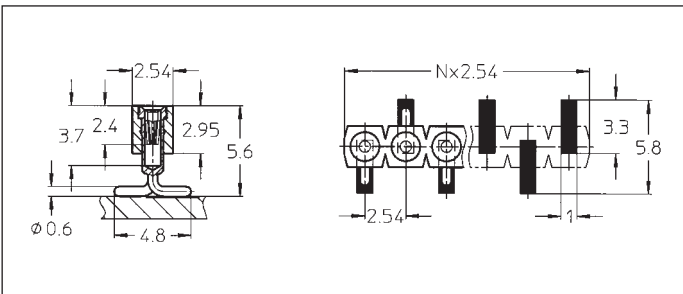
- 801-91-xxx-30-001
- 801-93-xxx-30-001
- 801-99-xxx-30-001

SMD receptacle: single row
perpendicular mount
Availability from: 3 to 50 contacts
Standard number of contacts 24,
28, 29, 30, 36, 42, 48 and 50



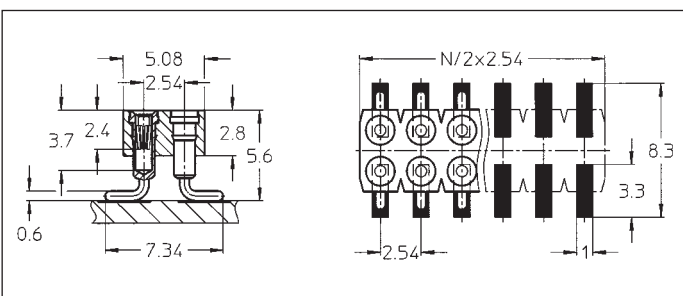
- 803-91-xxx-30-001
- 803-93-xxx-30-001
- 803-99-xxx-30-001

SMD receptacle: double row
perpendicular mount
Availability from: 4 to 100
contacts
Standard number of contacts 72
and 100



- 801-91-xxx-30-002
- 801-93-xxx-30-002
- 801-99-xxx-30-002

SMD receptacle: single row, low
profile, perpendicular mount
Availability from: 3 to 32 contacts
Standard number of contacts 32



- 803-91-xxx-30-002
- 803-93-xxx-30-002
- 803-99-xxx-30-002

SMD receptacle: double row, low
profile, perpendicular mount
Availability from: 4 to 72 contacts
Standard number of contacts 40,
44, 56, 64 and 72