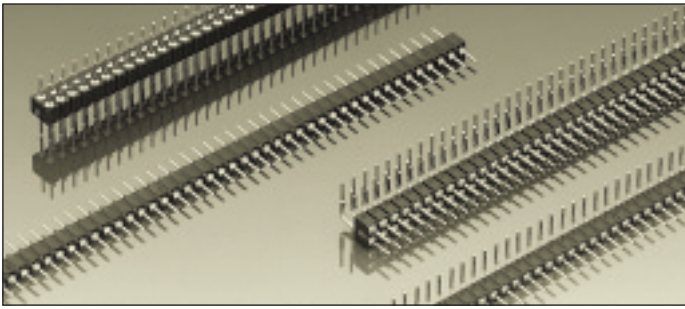
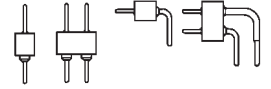


## Series 830



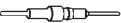
PCB connectors 2.0 mm  
Single row / double row  
Solder tail



**"Hard metric"**  
PCB pin connectors, solder tail  
Grid spacing 2.0x2.0 mm  
Screw-machined pins  
Ø 0.46-0.47 mm

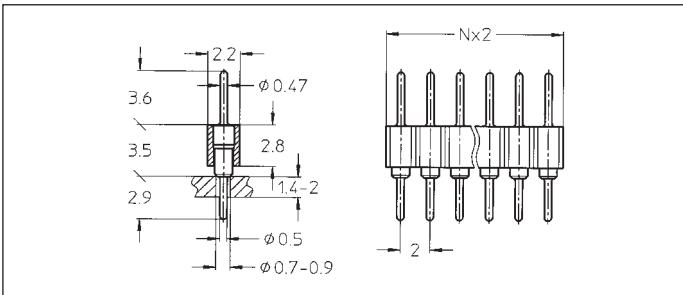


For corresponding receptacles see pages 18, 20 and 21

| Platings | Sleeve  | Clip  | Pin  |
|----------|------------------------------------------------------------------------------------------|----------------------------------------------------------------------------------------|---------------------------------------------------------------------------------------|
| 10<br>90 |                                                                                          |                                                                                        | 0.25 µm Au<br>5 µm Sn Pb                                                              |

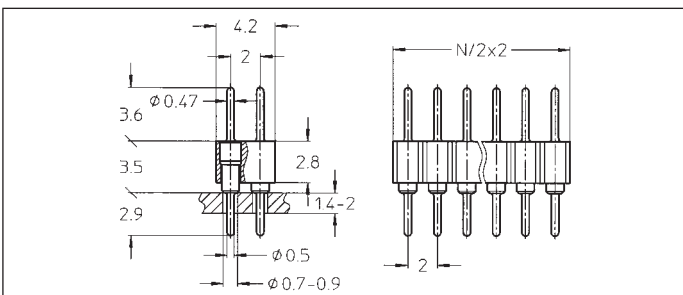
### Ordering information

Replace **xxx** with the number of poles, e.g. 832-10-**xxx**-20-001 for a double row version with 8 pins per row becomes:  
832-10-**016**-20-001



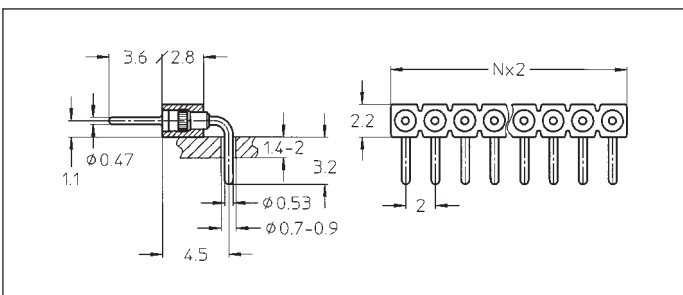
830-10-xxx-10-001  
830-90-xxx-10-001

Straight pin connector: solder tail, single row  
Availability from: 1 to 50 contacts  
Standard number of contacts 50



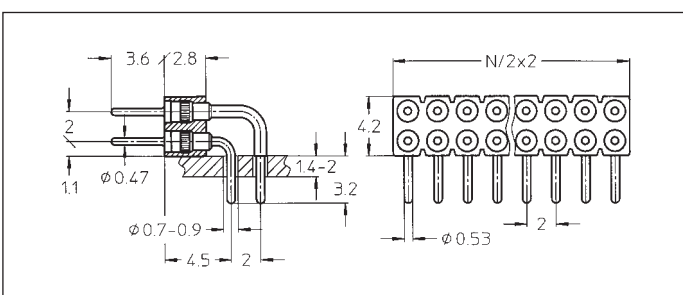
832-10-xxx-10-001  
832-90-xxx-10-001

Straight pin connector: solder tail, double row  
Availability from: 4 to 100 contacts  
Standard number of contacts 100



830-10-xxx-20-001  
830-90-xxx-20-001

Right angle pin connector: solder tail, single row  
Availability from: 1 to 50 contacts  
Standard number of contacts 50



832-10-xxx-20-001  
832-90-xxx-20-001

Right angle pin connector: solder tail, double row  
Availability from: 4 to 100 contacts  
Standard number of contacts 100