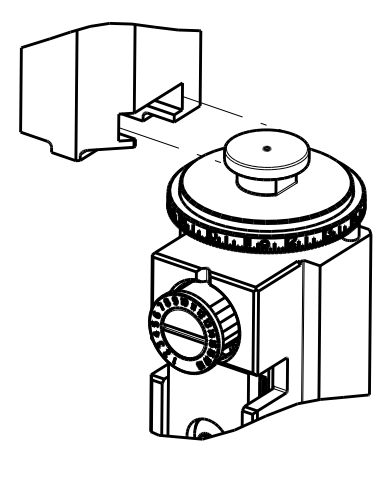


THIS DRAWING IS UNPUBLISHED.
 BY TYCO ELECTRONICS CORPORATION, ALL RIGHTS RESERVED.



APPLICATOR DATA

CRIMP	SIZE	TYPE
WIRE	2.03 mm [.080]	F
INSUL	4.06 mm [1.60]	O

APPLICATOR INSTRUCTIONS
408-10389

TERMINAL DATA: TE TERMINAL **TE CRIMP SPECIFICATION**

TERMINAL NAME: DIA 1.5mm PIN or SOCKET CONTACT, SINGLE WIRE

WIRE STRIP LENGTH	INSULATION DIAMETER RANGE
4.20-4.80 mm [1.65-.189 IN]	\varnothing 1.1-1.27

TERMINAL APPLICATION SPECIFICATION	(A) I14-18040	(B) I14-18020
TE CRIMP SPECIFICATION	-	-

TERMINALS APPLIED

TE TERMINAL	TE TERMINAL	TE SEAL	TE SEAL
(A) 929989-1	(A) 1-1418497-0	(A) 828904	(A) 828904
(A) 929989-4	(B) 929967-1	(A) 828904	(B) 828920
(A) 929989-7	(B) 929967-7	(A) 828904	(B) 828920
(A) 929989-8	(B) 929967-8	(A) 828904	(B) 828920
(A) 1-929989-0	(B) 1-929967-0	(A) 828904	(B) 828920
(B) 929974-1	(B) 1-929967-4	(B) 828920	(B) 828920
(B) 929974-4	(A) 1703013-1	(B) 828920	(A) 828904
(B) 929974-7	(A) 1703013-2	(B) 828920	(A) 828904
(B) 929974-8	(A) 1703013-4	(B) 828920	(A) 828904
(B) 929974-9	(A) 1703013-8	(B) 828920	(A) 828904
(B) 1-929974-4	(A) 1703049-1	(B) 828920	(A) 828904

WIRE SIZE	CRIMP HEIGHT mm [INCH]	CRIMP HEIGHT REFERENCE SETTING
1.00mm ²	1.45 +/- 0.05 [1.057 +/- .002]	3.7
0.75mm ²	1.36 +/- 0.05 [1.054 +/- .002]	4.5
0.50mm ²	1.27 +/- 0.05 [1.050 +/- .002]	5.5

- RECOMMENDED SPARE PARTS
- GREASE BEARING SURFACES LIGHTLY.
- LUBRICATE DAILY PER THE APPLICATOR INSTRUCTION SHEET SUPPLIED WITH THE APPLICATOR.
- APPLICATOR SPECIFIC DATA TO BE ENTERED INTO BLANK MEMORY CHIP AT ASSEMBLY. SEE BELOW FOR PART NUMBER:
 - MECHANICAL FEED WITH "SMART APPLICATOR" CONVERSION: 8-2151139-4
 - PNEUMATIC FEED WITH "SMART APPLICATOR" CONVERSION: 8-2151139-5
 - SERVO FEED WITH "FINE CRIMP HEIGHT ADJUST": 8-2151139-5
 - SERVO FEED WITH "NON-CRIMP HEIGHT ADJUST": 8-2151139-6
- ADJUSTMENT OF THE STRIPPER MAY BE REQUIRED WHEN MOVING THE APPLICATOR BETWEEN BENCH AND LEADMAKER APPLICATIONS.
- APPLY PART NUMBER 1-23419-5 LOCTITE TO THREADS OF ITEMS 62 & 242. FOR -6 ONLY APPLY PART NUMBER 1-23419-5 LOCTITE TO THREADS OF ITEMS 37 & 242.
- GREASE THREADS, GROOVE AND O-RING ON ITEMS 35 & 252.
- MAGNET, ITEM 166 MUST BE ORIENTED CORRECTLY IN ORDER TO PROPERLY ACTUATE THE COUNTER.
- CRIMP HEIGHT REFERENCE SETTING WAS THE SETTING USED WHEN THE APPLICATOR WAS QUALIFIED AT THE FACTORY. ADJUSTMENT MAY BE NECESSARY WHEN RUNNING APPLICATOR IN THE FIELD.
- SPARE FEED CAM STORAGE LOCATION REFER TO INSTRUCTION SHEET FOR ADDITIONAL INFORMATION.
- TO CONVERT THE APPLICATOR TO A NON-CARRIER CUTTING STYLE, REMOVE ITEM 13 AND ATTACH TO THE LOCATION ON THE BACK SIDE OF THE HOUSING. REFER TO INSTRUCTION SHEET FOR ADDITIONAL INFORMATION.
- WHEN ASSEMBLING -6 NON-CRIMP HEIGHT ADJUST APPLICATOR USE SHIM PACK 2119957-2 TO ALIGN APPLICATOR'S MAXIMUM WIRE CRIMP HEIGHT AT NORMAL TERMINATOR SHUT HEIGHT
- THIS APPLICATOR APPLIES TERMINAL WITH A SEAL. INSULATION RANGE QUOTED IS THAT OF THE TERMINAL. THE SEAL INSULATION RANGE IS \varnothing 1.2-2.1mm.
- APPLY TORQ-SEAL IN ALLEN SOCKET TO FILL HOLE AFTER FLAT HD HAS BEEN ADJUSTED TO CORRECT HEIGHT AT QUALIFICATION. APPLY #1-23419-5 LOC-TITE TO THREADS.
- CUT TO LENGTH AT ASSEMBLY.

TERMINAL PN	FEED	INSULATION RANGE
929989	12.5mm	\varnothing 3.4mm MAX
929974	14.5mm	\varnothing 3.4mm MAX
929967	14.5mm	\varnothing 3.4mm MAX
1703013	12.5mm	\varnothing 1.2-2.1mm
1418497	12.5mm	\varnothing 3.4mm MAX
1703049	12.5mm	\varnothing 1.2-2.1mm

***WARNING**
 ON INSTALLATION, SET WIRE DISC, ITEM 40 TO LARGEST WIRE SIZE SETTING. USE OF SETTINGS BELOW MINIMUM REQUIRED CRIMP HEIGHT SETTING WILL CAUSE DAMAGE TO CRIMP TOOLING.

-77	-7	-6	-5	-2	-1	PART NO	DESCRIPTION	ITEM NO
-	-	1	-	-	-	2119957-2	APPLICATOR SHIM PACK	260
-	1	-	1	1	1	8-21084-0	O-RING, .676 ID, .070 DIA. MAT.	252

ATLANTIC VERSION
 Shown on sheets 1 of 4 & 2 of 4
 (Pacific version shown on sheets 3 of 4 & 4 of 4)

SET UP GAUGE	LOC	DIST	REVISIONS			
2119599-1	A	66	REV	DATE	BY	APPV
			A	RELEASED		22FEB2012 KH SX
			B	ECR-13-004888		19MAR2013 KH TE

REV	DATE	BY	APPV	DESCRIPTION
-	-	-	-	1 - 2119640-1 PUSH ROD, AIR FEED 250
-	-	-	-	1 - 2079988-1 BUSHING, LCH5-12, MISUMI 249
-	-	-	-	1 - 2119641-1 FEED CAM, AIR FEED 248
-	1	-	1	1 2119798-1 DETENT PIN 247
-	1	-	1	1 1-22279-3 SPRING, COMPRESSION 246
-	-	1	-	- 2119758-1 RAM, AMP STYLE, SIDE FEED, NON-ADJ. 245
-	1	1	1	1 1 2119082-9 CAM, SNAIL, INSULATION ADJUSTMENT 244
-	1	1	1	1 1 2079764-1 WASHER, WAVE SPRING, CREST-TO-CREST 243
-	1	1	1	1 1 2119083-1 RETAINER, INSULATION DIAL 242
-	1	1	1	1 1 7-18023-7 SCR, SKT HD CAP M3 X 4.0 241
-	-	2	2	- 2168400-6 SHCS, LOW HEAD, RoHS, M5 X 16 240
-	-	-	-	1 2119580-1 MECHANICAL FEED ASSEMBLY 239
-	-	-	-	1 2063440-1 AIR FEED MODULE 238
-	-	1	1	- 2119740-2 TAG, IDENTIFICATION 213
-	-	1	1	- 1901094-3 SPACER, FEEDER 198
-	-	-	2	- 21045-3 RING, RETAIN, EXTERN, 3/16 CRESCENT 172
-	1	1	1	1 1 994969-1 MAGNET, RARE EARTH HIGH ENERGY 166
-	REF	REF	REF	REF 994970-2 COUNTER, MAGNETIC 164
-	-	-	-	1 240638-1 SPRING, FEED FINGER 163
-	-	-	-	1 3-23627-7 PIN, RETAIN, GRVD, 3/16 X .854 137
-	-	-	-	1 2119799-1 HOLDER, FEED FINGER, AF 136
-	-	REF	REF	- SEE NOTE 4 MEMORY CHIP, PROGRAMMED 135
-	-	1	1	- 1633743-1 SERVO FEED LATCH ASM 133
-	1	1	1	1 1 1-18028-2 WASHER, FLAT, REG M4 119
-	-	REF	REF	- 2119944-1 FEED FINGER ASSEMBLY, SF 117
-	1	1	1	1 1 1 455888-5 SPACER, CRIMPER 82
-	1	1	1	1 1 2119956-1 DOCUMENTATION PACKAGE 71
-	1	-	-	1 1 2119740-1 TAG, IDENTIFICATION 67
-	2	2	2	2 2 2168078-1 SCREW, DRIVE, RH, RoHS 66
-	1	-	1	1 1 2119793-1 LIMITER, ADJUSTMENT BOLT 63
-	3	-	3	3 3 992763-5 SCR, SET, SOC, CONE POINT, M3 x 4.0 62
-	1	1	1	1 1 2079383-4 SCR, BHSC, RoHS (M4 X 8) 60
-	-	-	-	1 5-18022-5 SCR, HEX HD CAP, M4 X 6.0 59
-	1	1	1	1 1 985575-3 SCR, FLT SKT HD CAP M3 X 10.0 57
-	-	-	-	1 1 1338685-1 PAWL, FEED 56
-	4	4	4	4 4 2168400-1 SHCS, LOW HEAD, RoHS, M4 X 12 54
-	2	2	2	2 2 2168083-8 SCR, SKT HD CAP, RoHS, M4 X 16 53
-	1	1	1	1 1 5018030-1 NUT, HEX, REG, RoHS, M3 52
-	1	1	1	1 1 811242-5 BUMPER, HOLD DOWN 51
-	1	1	1	1 1 690753-2 SPACER, TONKER 50
-	-	-	-	1 2 18023-9 SCR, SKT HD CAP M4 X 6.0 49
-	-	-	-	1 2119652-1 FEED CAM, PRE FEED 48
-	-	-	-	1 2119653-1 FEED CAM, POST FEED 47
-	1	1	1	1 1 2119656-9 APPLICATOR BASIC ASSEMBLY, SF 46
-	1	-	-	1 1 2119370-1 RAM, AMP STYLE, SIDE FEED 44
-	1	1	1	1 1 2079383-7 SCR, BHSC, RoHS (M8 X 25) 41
-	1	-	-	1 1 2119645-1 DISC, NUMBERED FA WIRE ADJUSTMENT 40
-	1	-	-	1 1 2119957-1 APPLICATOR SHIM PACK 39
-	1	1	1	1 1 2119644-1 RAM WASHER, PRECISION 38
-	1	1	1	1 1 2119085-1 FA HEAD, ATLANTIC STYLE 37
-	1	-	-	1 1 2119092-1 BOLT, ADJUSTMENT 35
-	1	1	1	1 1 1-1752356-7 SUPPORT, TERMINAL 34
-	2	2	2	2 2 2079383-5 SCR, BHSC, RoHS (M4 X 20) 33
-	1	1	1	1 1 2161328-1 HEX HEAD, FLANGED, M5 x 8mm LONG 32
-	1	1	1	1 1 1-1320908-0 SPACER, STRIP GUIDE 30
-	1	1	1	1 1 2119959-1 ASSEMBLY, STRIP GUIDE 29
-	1	1	1	1 1 455888-5 SPACER, CRIMPER 28
-	1	1	1	1 1 1320928-6 STRIP GUIDE 24
-	1	1	1	1 1 2168083-2 SCR, SKT HD CAP, RoHS, M4 X 8.0 21
-	1	1	1	1 1 1-18028-2 WASHER, FLAT, REG M4 20
-	1	1	1	1 1 2119533-1 STRIPPER, SIDE FEED 19
-	1	1	1	1 1 2119806-1 INSERT, SHEAR 13
-	1	1	1	1 1 3-22280-3 SPRING, COMPRESSION 12
-	1	1	1	1 1 1-356885-4 STOP, SHEAR 11
-	1	1	1	1 1 2119805-1 SHEAR HOLDER, FRONT 10
-	1	1	1	1 1 318707-1 FLOATING SHEAR, FRONT 9
-	1	1	1	1 1 1338693-1 ANVIL, COMBINATION .080 8
-	1	1	1	1 1 3-240641-8 SPACER 7
-	1	1	1	1 1 2119781-1 DEPRESSOR, SHEAR 5
-	1	1	1	1 1 3-238011-3 BLOCK, CRIMPER SPACER 4
-	1	1	1	1 1 3-2119784-1 CRIMPER, INSULATION O PREMIUM 3
-	1	1	1	1 1 1-455888-1 SPACER, CRIMPER 2
-	1	1	1	1 1 1-456405-6 CRIMPER, WIRE PREMIUM 1

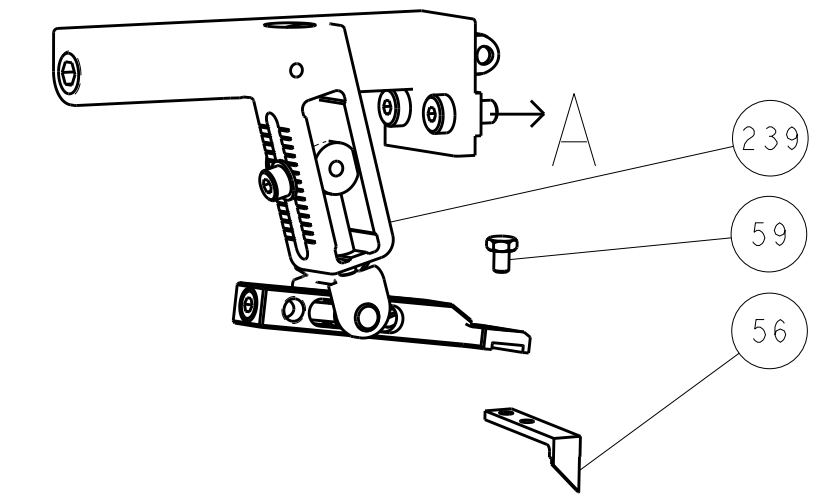
TE Connectivity
 Harrisburg, PA 17105-3608

STE Ocean Side Feed Applicator

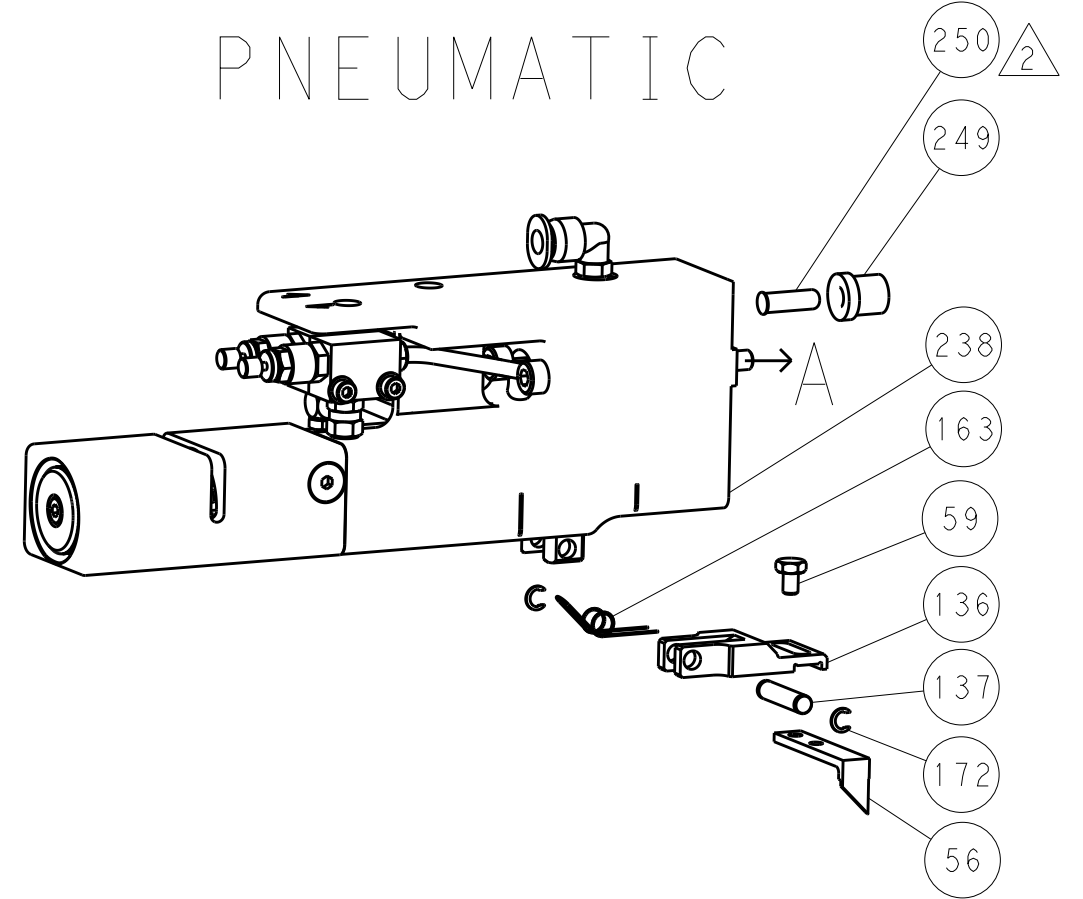
Customer Accessible Production Drawing

LOC		DIST		REVISIONS			
A	66	P	LTM	DESCRIPTION	DATE	OWN	APVD
		-	-	SEE SHEET 1	-	-	-

FEED TYPE MECHANICAL



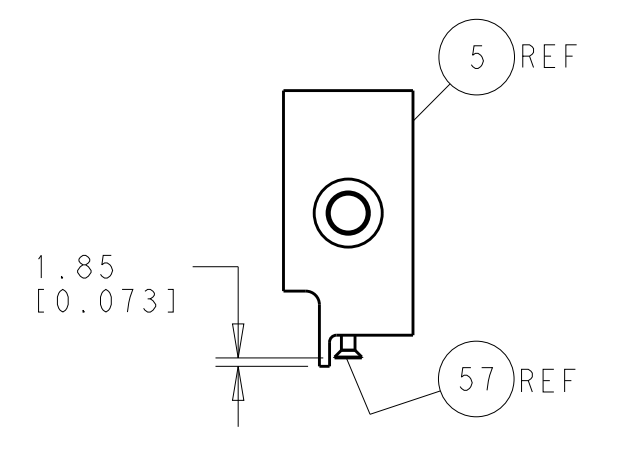
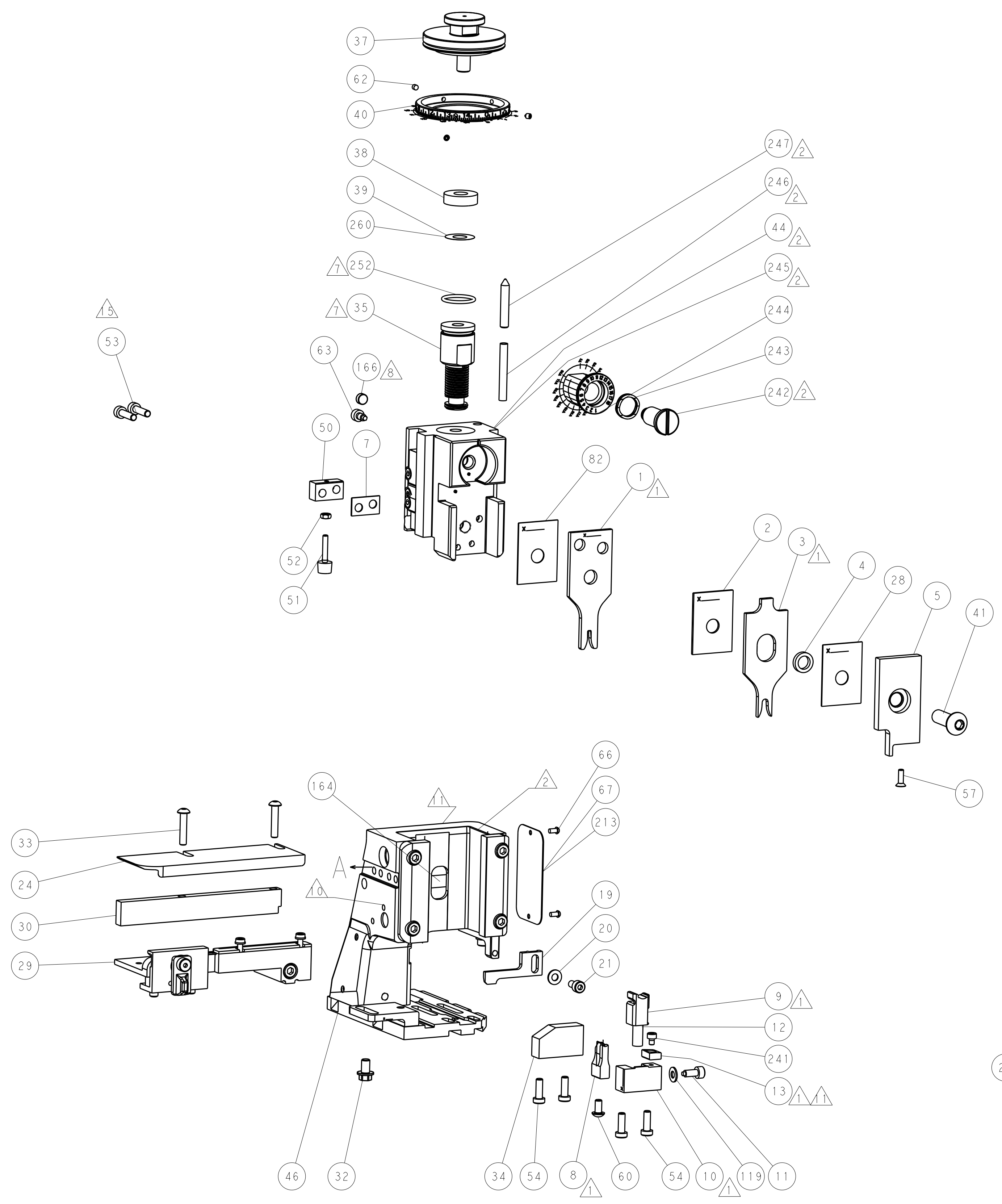
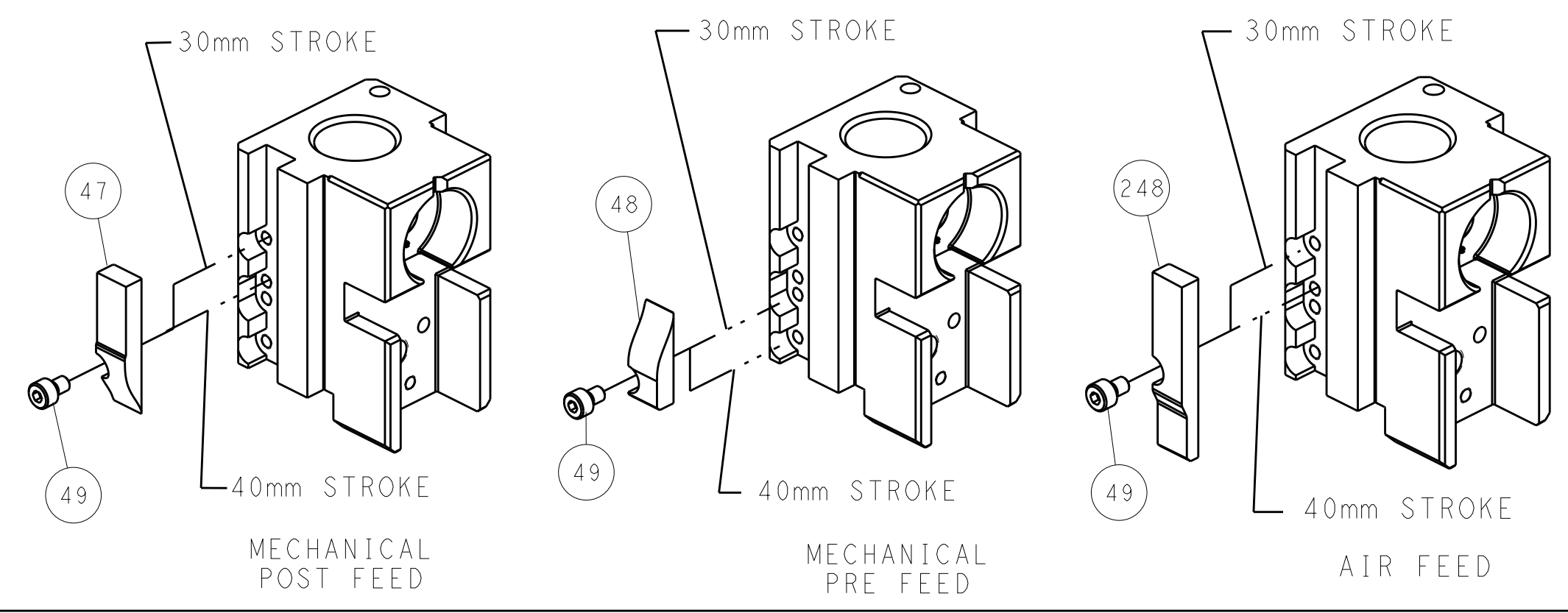
PNEUMATIC



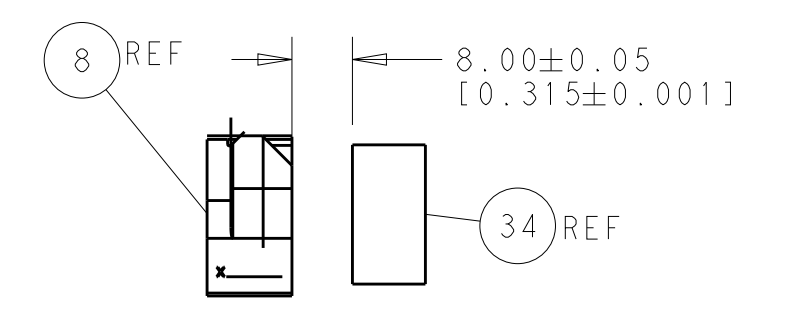
SERVO LATCH PLATE



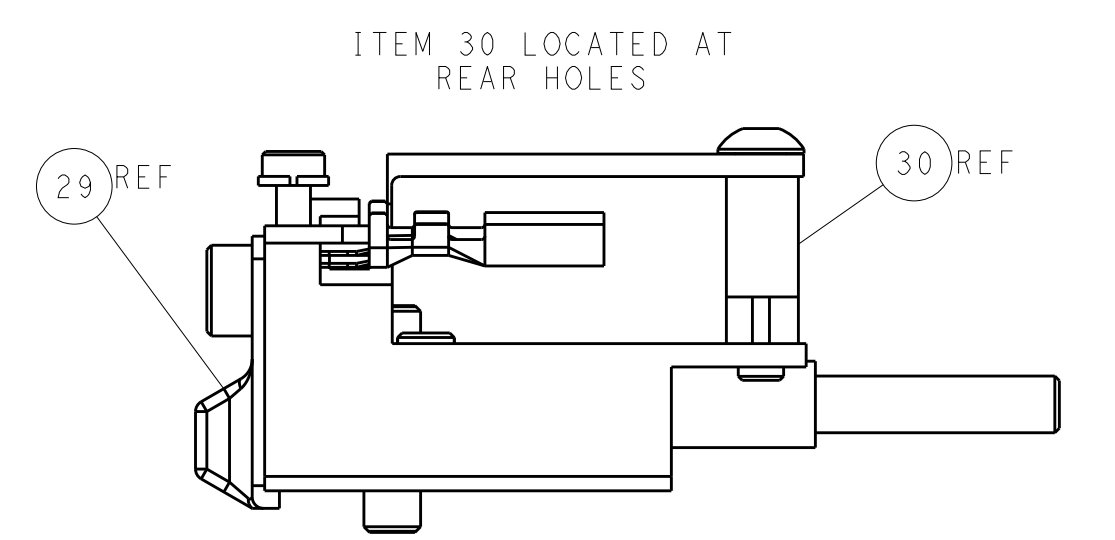
CAM POSITIONS



SHEAR DEPRESSOR DETAIL



TERMINAL SUPPORT LOCATION



FEED TRACK POSITION GUIDE BY INSULATION BARREL

ATLANTIC VERSION
 Shown on sheets 1 of 4 & 2 of 4
 (Pacific version shown on sheets 3 of 4 & 4 of 4)

DIMENSIONS:		TOLERANCES UNLESS OTHERWISE SPECIFIED:		DWN R. HUANG 13OCT2011		TE Connectivity Harrisburg, PA 17105-3608	
mm	0 PLC ±0.5	1 PLC ±0.5	2 PLC ±0.13	3 PLC ±0.013	4 PLC ±0.0013	APVD S. XI 13OCT2011	NAME Ocean Side Feed Applicator
MATERIAL:	FINISH:	WEIGHT:	SCALE	SIZE	CAGE CODE	DRAWING NO	RESTRICTED TO
			1:2	A1	00779	©=2151139	
Customer Accessible Production Drawing				SHEET	2	OF 4	REV B

PACIFIC VERSION TERMINATOR INTERFACE ADAPTER	PART NUMBER	REVISION	DESCRIPTION	FEED TYPE	CONVERT TO						
					PART NUMBERS REQUIRED						
	2-2151139-1	B	FINE CRIMP HEIGHT ADJUST	MECHANICAL	PNEUMATIC FEED	2119950-1	1338685-1	5-18022-5	2119641-2	2119799-1	2063440-1
					SERVO LATCH PLATE	2119951-1	-	8-2151139-5	1901094-3	-	2168400-6 (QUANTITY 2)
					SMART APPLICATOR	2161326-1	-	8-2151139-4	-	-	
	2-2151139-2	B	FINE CRIMP HEIGHT ADJUST	PNEUMATIC	MECHANICAL FEED	2119949-1	1338685-1	5-18022-5	2119653-2	-	-
					SERVO LATCH PLATE	2119951-1	-	8-2151139-5	1901094-3	-	2168400-6 (QUANTITY 2)
					SMART APPLICATOR	2161326-1	-	8-2151139-4	-	-	
	2-2151139-5	B	FINE CRIMP HEIGHT ADJUST	SERVO LATCH PLATE	2119949-1	1338685-1	5-18022-5	2119653-2	-	-	
	2-2151139-7	B	FINE CRIMP HEIGHT ADJUST	NONE	-	-	-	-	-	-	
	7-2151139-7	A	CRIMP TOOLING KIT	-	-	-	-	-	-	-	

APPLICATOR DATA		
CRIMP WIRE	SIZE	TYPE
	2.03 mm [.080]	F
	4.06 mm [1.60]	Q
APPLICATOR INSTRUCTIONS 408-10389		

TERMINAL DATA: TE TERMINAL		TE CRIMP SPECIFICATION	
TERMINAL NAME: DIA 1.5mm PIN or SOCKET CONTACT, SINGLE WIRE			
WIRE STRIP LENGTH 4.20-4.80 mm [1.65-1.89 IN]		INSULATION DIAMETER RANGE Ø	
TERMINAL APPLICATION SPECIFICATION		CRIMP HEIGHT REFERENCE SETTING	
TE TERMINAL		TE SEAL	
(A) 929989-1	(A) 1-1418497-0	(A) 828904	(A) 828904
(A) 929989-4	(B) 929967-1	(A) 828904	(B) 828920
(A) 929989-7	(B) 929967-7	(A) 828904	(B) 828920
(A) 929989-8	(B) 929967-8	(A) 828904	(B) 828920
(A) 1-929989-0	(B) 1-929967-0	(A) 828904	(B) 828920
(B) 929974-1	(B) 1-929967-4	(B) 828920	(B) 828920
(B) 929974-4	(A) 1703013-1	(B) 828920	(A) 828904
(B) 929974-7	(A) 1703013-2	(B) 828920	(A) 828904
(B) 929974-8	(A) 1703013-4	(B) 828920	(A) 828904
(B) 929974-9	(A) 1703013-8	(B) 828920	(A) 828904
(B) 1-929974-4	(A) 1703049-1	(B) 828920	(A) 828904

- RECOMMENDED SPARE PARTS
- GREASE BEARING SURFACES LIGHTLY
- LUBRICATE DAILY PER THE APPLICATOR INSTRUCTION SHEET SUPPLIED WITH THE APPLICATOR.
- APPLICATOR SPECIFIC DATA TO BE ENTERED INTO BLANK MEMORY CHIP AT ASSEMBLY. SEE BELOW FOR PART NUMBER:
 MECHANICAL FEED WITH "SMART APPLICATOR" CONVERSION: 8-2151139-4
 PNEUMATIC FEED WITH "SMART APPLICATOR" CONVERSION: 8-2151139-4
 SERVO FEED WITH "FINE CRIMP HEIGHT ADJUST": 8-2151139-5
 SERVO FEED WITH "NON-CRIMP HEIGHT ADJUST": 8-2151139-6
- ADJUSTMENT OF THE STRIPPER MAY BE REQUIRED WHEN MOVING THE APPLICATOR BETWEEN BENCH AND LEADMAKER APPLICATIONS.
- APPLY PART NUMBER 1-23419-5 LOCTITE TO THREADS OF ITEMS 62 & 242.
- GREASE THREADS, GROOVE AND O-RING ON ITEMS 139 & 152.
- MAGNET MUST BE ORIENTED CORRECTLY IN ORDER TO PROPERLY ACTUATE THE COUNTER.
- CRIMP HEIGHT REFERENCE SETTING WAS THE SETTING USED WHEN THE APPLICATOR WAS QUALIFIED AT THE FACTORY. ADJUSTMENT MAY BE NECESSARY WHEN RUNNING APPLICATOR IN THE FIELD.
- SPARE FEED CAM STORAGE LOCATION REFER TO INSTRUCTION SHEET FOR ADDITIONAL INFORMATION.
- TO CONVERT THE APPLICATOR TO A NON-CARRIER CUTTING STYLE, REMOVE ITEM 13 AND ATTACH TO THE LOCATION ON BACK SIDE OF THE HOUSING. REFER TO INSTRUCTION SHEET FOR ADDITIONAL INFORMATION.
- THIS APPLICATOR APPLIES TERMINAL WITH A SEAL. INSULATION ANGLE QUOTED IS THAT OF THE TERMINAL. THE SEAL INSULATION RANGE IS Ø1.2-2.1mm. FEED ADJUSTMENTS ARE REQUIRED WHEN SWITCHING TERMINALS.
- APPLY TORO-SEAL IN ALLEN SOCKET TO FILL HOLE AFTER FLAT HD HAS BEEN ADJUSTED TO CORRECT HEIGHT AT QUALIFICATION. APPLY #1-23419-5 LOC-TITE TO THREADS.
- CUT TO LENGTH AT ASSEMBLY.

TERMINAL PN	FEED	INSULATION RANGE
929989	12.5mm	Ø 3.4mm MAX
929974	14.5mm	Ø 3.4mm MAX
929967	14.5mm	Ø 3.4mm MAX
1703013	12.5mm	Ø 1.2-2.1mm
1418497	12.5mm	Ø 3.4mm MAX
1703049	12.5mm	Ø 1.2-2.1mm

PACIFIC VERSION
 Shown on sheets 3 of 4 & 4 of 4
 (Atlantic version shown on sheets 1 of 4 & 2 of 4)

SET UP GAUGE		LOC	DIST	REVISIONS			
2119599-1		A	66	REV	DATE	OWN	APVD
				-	SEE SHEET 1	-	-

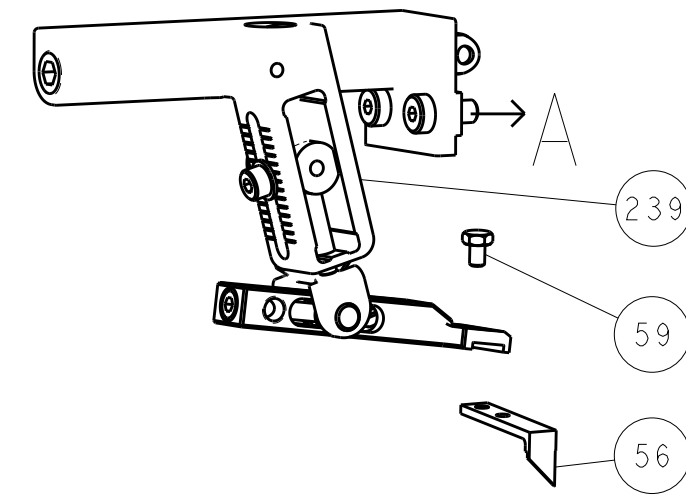
REV	DATE	OWN	APVD	DESCRIPTION	ITEM NO	
-	1	1	1	2119782-1	FINE ADJUST HEAD ASM, PACIFIC STYLE	251
-	-	-	1	2119640-1	PUSH ROD, AIR FEED	250
-	-	-	1	2079988-1	BUSHING, LCH5-12, MISUMI	249
-	1	1	1	1-22279-3	SPRING, COMPRESSION	246
-	1	1	1	2119082-9	CAM, SNAIL, INSULATION ADJUSTMENT	244
-	1	1	1	2079764-1	WASHER, WAVE SPRING, CREST-TO-CREST	243
-	1	1	1	2119083-1	RETAINER, INSULATION DIAL	242
-	1	1	1	7-18023-7	SCR, SKT HD CAP M3 X 4.0	241
-	-	2	-	2168400-6	SHCS, LOW HEAD, RoHS, M5 X 16	240
-	-	-	1	2119580-1	MECHANICAL FEED ASSEMBLY	239
-	-	-	1	2063440-1	AIR FEED MODULE	238
-	-	1	-	2119740-2	TAG, IDENTIFICATION	213
-	-	1	-	1901094-3	SPACER, FEEDER	198
-	-	-	2	21045-3	RING, RETAIN, EXTERN, 3/16 CRESCENT	172
-	1	1	1	994969-1	MAGNET, RARE EARTH HIGH ENERGY	166
-	REF	REF	REF	994970-2	COUNTER, MAGNETIC	164
-	-	-	1	240638-1	SPRING, FEED FINGER	163
-	1	1	1	8-21084-1	O-RING, .801 ID, .070 DIA, MAT.	152
-	-	-	1	2119641-2	FEED CAM, AIR FEED	151
-	1	1	1	2119798-2	DETENT PIN	145
-	1	1	1	2079383-8	SCR, BHSC, RoHS (M4 X 16)	144
-	4	4	4	2168400-5	SHCS, LOW HEAD, RoHS, M4 X 20	143
-	-	-	1	2119653-2	FEED CAM, POST FEED	142
-	1	1	1	1-2119656-0	APPLICATOR BASIC ASSEMBLY, SF	141
-	1	1	1	2119650-1	RAM, ASIAN STYLE, SIDE FEED	140
-	1	1	1	2119092-2	BOLT, ADJUSTMENT	139
-	-	-	1	3-23627-7	PIN, RETAIN, GRVD, 3/16 X .854	137
-	-	-	1	2119799-1	HOLDER, FEED FINGER, AF	136
-	-	REF	-	SEE NOTE 4	MEMORY CHIP, PROGRAMMED	135
-	-	1	-	1633743-1	SERVO FEED LATCH ASM	133
-	1	1	1	1-18028-2	WASHER, FLAT, REG M4	119
-	-	REF	-	2119944-1	FEED FINGER ASSEMBLY, SF	117
-	1	1	1	455888-5	SPACER, CRIMPER	82
-	1	1	1	2119956-1	DOCUMENTATION PACKAGE	71
-	1	-	1	2119740-1	TAG, IDENTIFICATION	67
-	2	2	2	2168078-1	SCREW, DRIVE, RH, RoHS	66
-	1	1	1	2119793-1	LIMITER, ADJUSTMENT BOLT	63
-	3	3	3	992763-5	SCR, SET, SOC, CONE POINT, M3 X 4.0	62
-	-	-	1	5-18022-5	SCR, HEX HD CAP, M4 X 6.0	59
-	1	1	1	985575-3	SCR, FLT SKT HD CAP M3 X 10.0	57
-	-	-	1	1338685-1	PAWL, FEED	56
-	2	2	2	2168083-8	SCR, SKT HD CAP, RoHS, M4 X 16	53
-	1	1	1	5018030-1	NUT, HEX, REG, RoHS, M3	52
-	1	1	1	811242-5	BUMPER, HOLD DOWN	51
-	1	1	1	690753-2	SPACER, TONKER	50
-	-	-	1	18023-9	SCR, SKT HD CAP M4 X 6.0	49
-	-	-	1	2119652-1	FEED CAM, PRE FEED	48
-	1	1	1	2079383-7	SCR, BHSC, RoHS (M8 X 25)	41
-	1	1	1	2119645-1	DISC, NUMBERED FA WIRE ADJUSTMENT	40
-	1	1	1	2119957-1	APPLICATOR SHIM PACK	39
-	1	1	1	2119644-1	RAM WASHER, PRECISION	38
-	1	1	1	1-1752356-7	SUPPORT, TERMINAL	34
-	2	2	2	2079383-5	SCR, BHSC, RoHS (M4 X 20)	33
-	1	1	1	2161328-1	HEX HEAD, FLANGED, M5 X 8mm LONG	32
-	1	1	1	1-1320908-0	SPACER, STRIP GUIDE	30
-	1	1	1	2119959-1	ASSEMBLY, STRIP GUIDE	29
-	1	1	1	455888-5	SPACER, CRIMPER	28
-	1	1	1	1320928-6	STRIP GUIDE	24
-	1	1	1	2168083-2	SCR, SKT HD CAP, RoHS, M4 X 8.0	21
-	1	1	1	1-18028-2	WASHER, FLAT, REG M4	20
-	1	1	1	2119533-1	STRIPPER, SIDE FEED	19
-	1	1	1	2119806-1	INSERT, SHEAR	13
-	1	1	1	3-22280-3	SPRING, COMPRESSION	12
-	1	1	1	1-356885-4	STOP, SHEAR	11
-	1	1	1	2119805-1	SHEAR HOLDER, FRONT	10
-	1	1	1	318707-1	FLOATING SHEAR, FRONT	9
-	1	1	1	1338693-1	ANVIL, COMBINATION .080	8
-	1	1	1	3-240641-8	SPACER	7
-	1	1	1	2119781-1	DEPRESSOR, SHEAR	5
-	1	1	1	3-238011-3	BLOCK, CRIMPER SPACER	4
-	1	1	1	3-2119784-1	CRIMPER, INSULATION O PREMIUM	3
-	1	1	1	1-455888-1	SPACER, CRIMPER	2
-	1	1	1	1-456405-6	CRIMPER, WIRE PREMIUM	1
-77	-27	-25	-22	-21	PART NO	ITEM NO

DIMENSIONS:		TOLERANCES UNLESS OTHERWISE SPECIFIED:	OWN	CHEK	DATE
mm		Ø PLC ±.05	JK HUANG	S.XI	13OCT2011
FINISH		Ø PLC ±.013	APVD	APVD	13OCT2011
		Ø PLC ±.013	NAME: S. X. I.		
		Ø PLC ±.0013	PRODUCT SPEC: CRUZ		
		Ø PLC ±.0001	APPLICATION SPEC: OCEAN SIDE FEED APPLICATOR		
MATERIAL			WEIGHT	SIZE: A1 00779 C=2151139	
				SCALE: 1:2 SHEET: 3 of 4 REV: B	

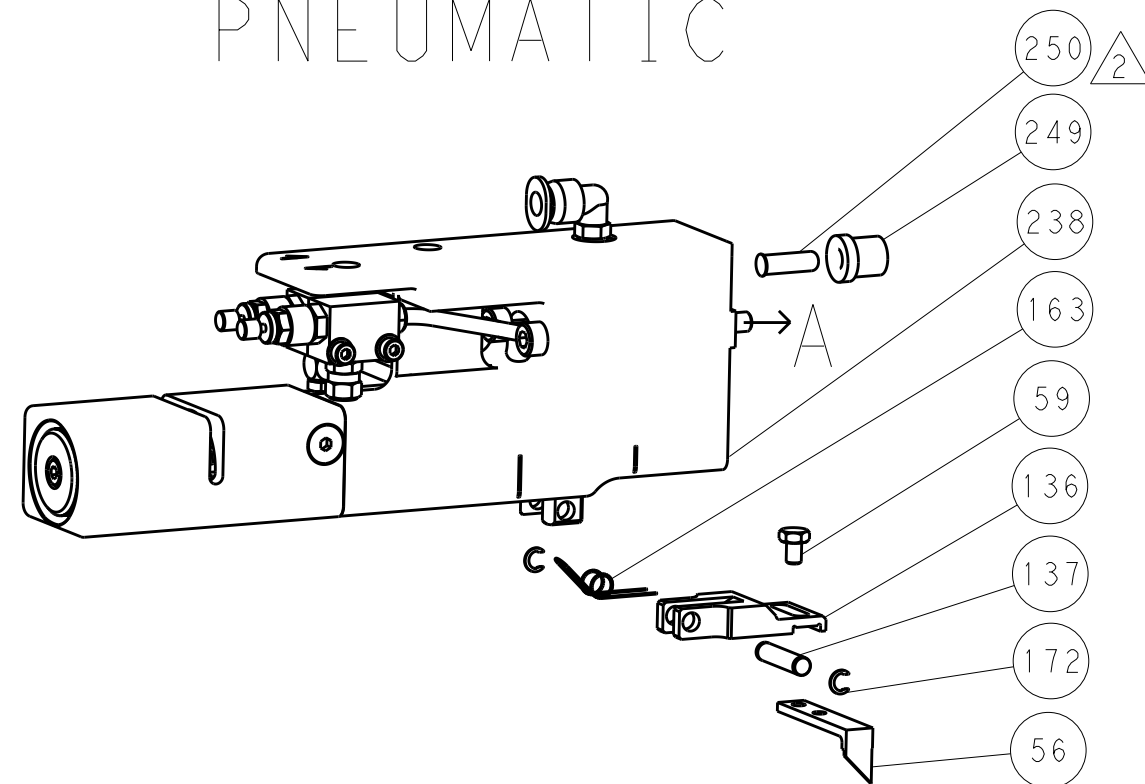
LOC	DIST	REVISIONS					
		P	LTN	DESCRIPTION	DATE	DWN	APVD
A	66	-	-	SEE SHEET 1	-	-	-

DIMENSIONAL AND TOLERANCING PER ASME Y14.5M-2009

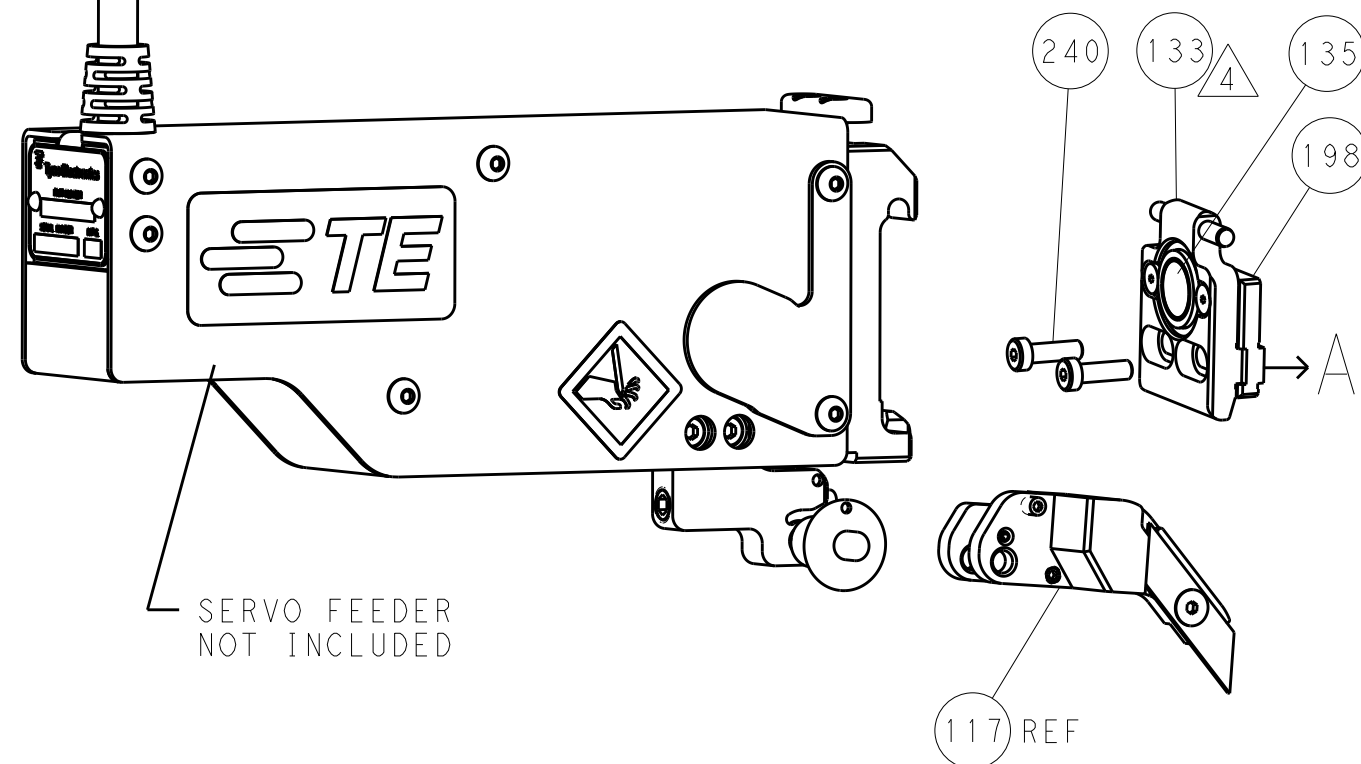
FEED TYPE MECHANICAL



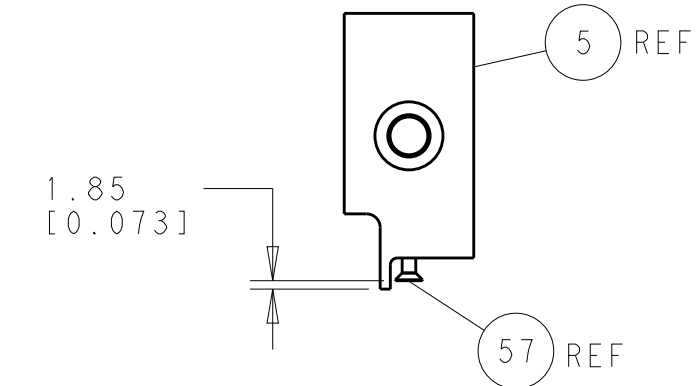
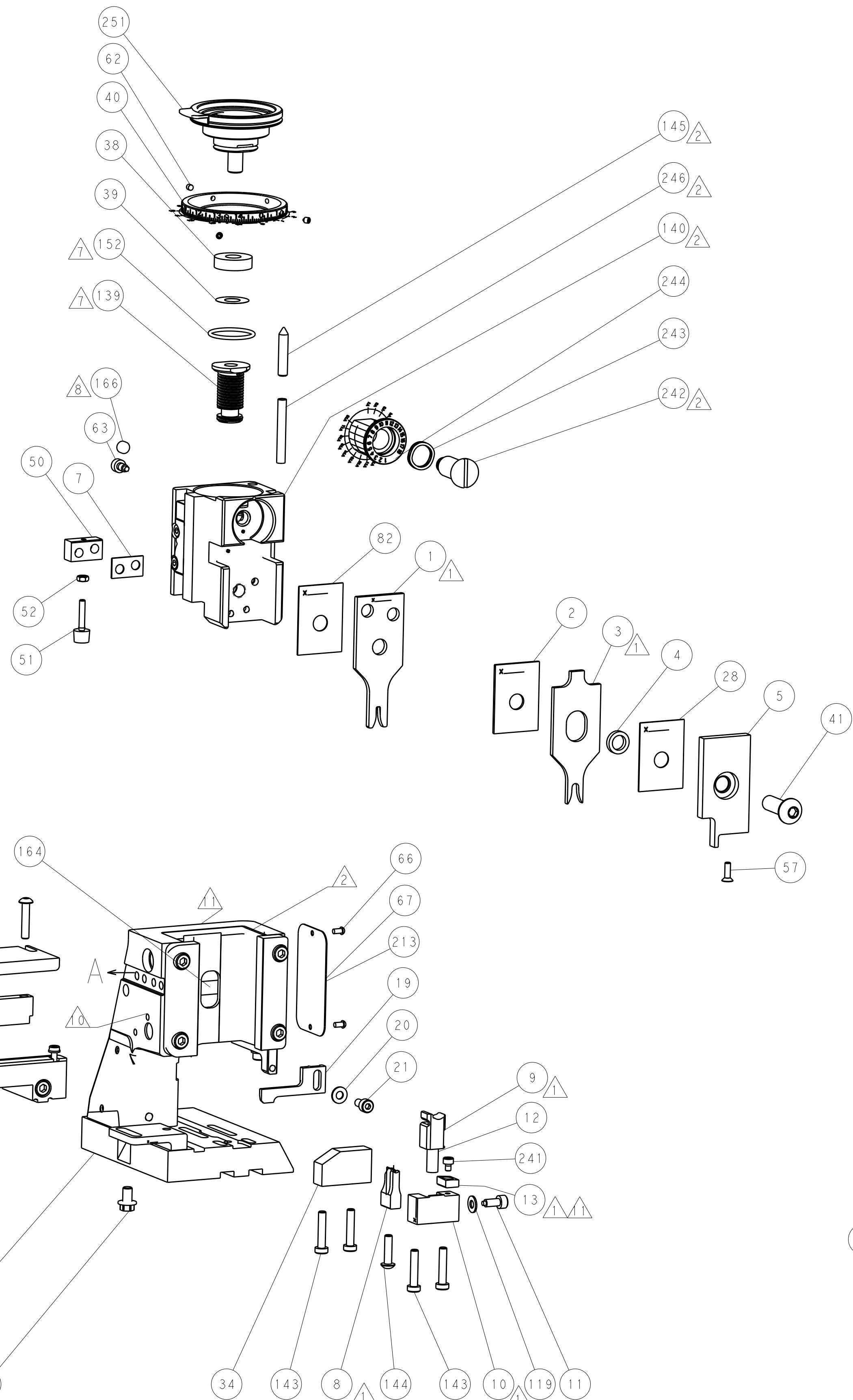
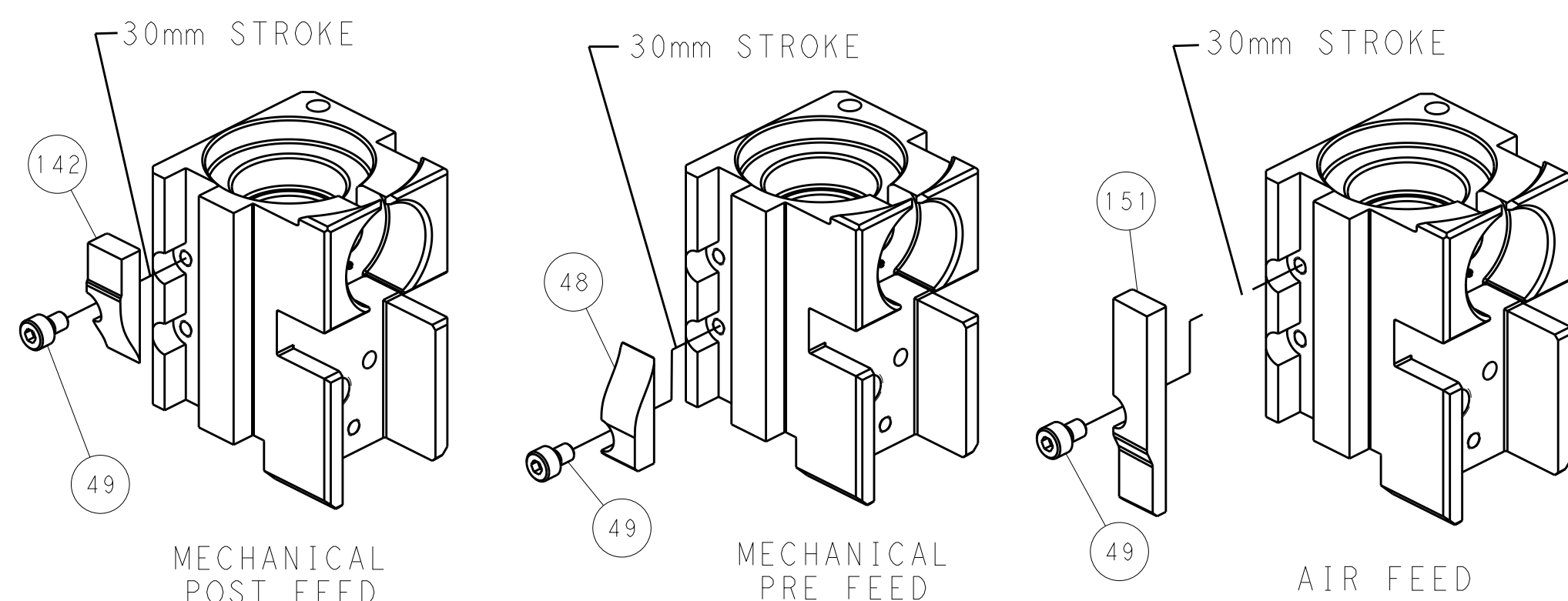
PNEUMATIC



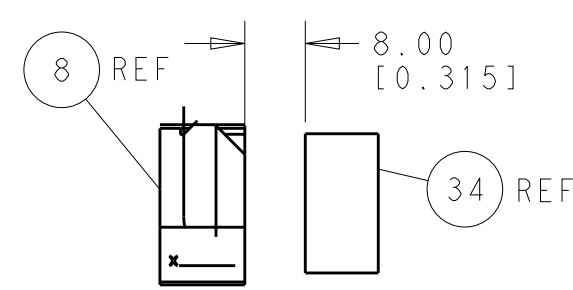
SERVO LATCH PLATE



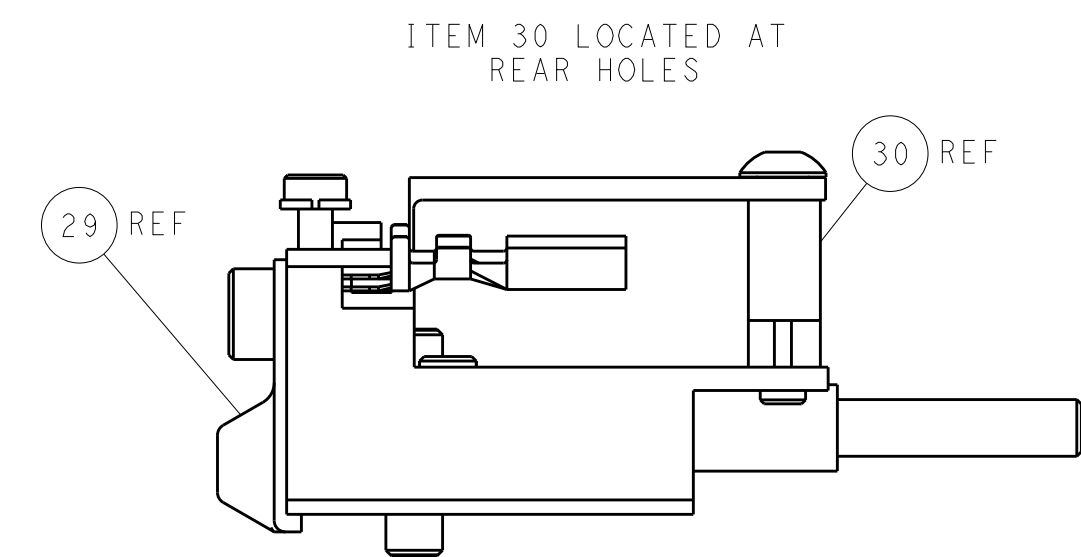
CAM POSITIONS



SHEAR DEPRESSOR DETAIL



TERMINAL SUPPORT LOCATION



FEED TRACK POSITION GUIDE BY INSULATION BARREL

PACIFIC VERSION
 Shown on sheets 3 of 4 & 4 of 4
 (Atlantic version shown on sheets 1 of 4 & 2 of 4)

<small>THIS DRAWING IS UNPUBLISHED. RELEASED FOR PUBLICATION. IT IS THE PROPERTY OF TYCO ELECTRONICS CORPORATION. IT IS TO BE USED TO CONTROL THE PRODUCTION AND ASSEMBLY OF THE PRODUCT. IT IS TO BE KEPT IN THE ORIGINAL FORM AND NOT REPRODUCED OR TRANSMITTED IN ANY FORM OR BY ANY MEANS, ELECTRONIC OR MECHANICAL, INCLUDING PHOTOCOPYING, RECORDING, OR BY ANY INFORMATION STORAGE AND RETRIEVAL SYSTEM. FOR MORE INFORMATION, CONTACT TYCO ELECTRONICS CORPORATION.</small>		DWN: R. HUANG 13OCT2011 CHK: S. XI 13OCT2011 APVD: J. CRUZ 13OCT2011	TE Connectivity Harrisburg, PA 17105-3608
DIMENSIONS: mm TOLERANCES UNLESS OTHERWISE SPECIFIED: 0 PLC ±0.5 1 PLC ±0.13 3 PLC ±0.013 4 PLC ±0.001 ANGLES ±0.001		PRODUCT SPEC: APPLICATION SPEC: WEIGHT: SCALE: 1:2	NAME: Ocean Side Feed Applicator SIZE: A1 CAGE CODE: 00779 DRAWING NO: 2151139 SHEET 4 OF 4 REV B