

PRODUCT NUMBER

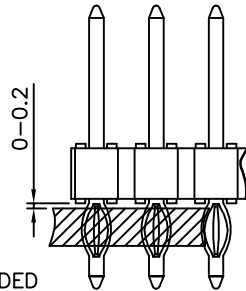
93690-YXX-XXLF

PLATING, SEE TABLE

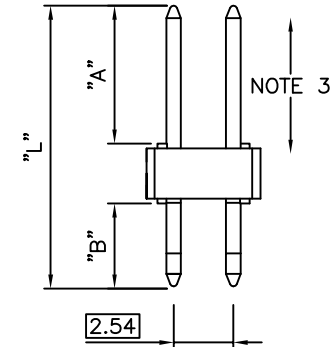
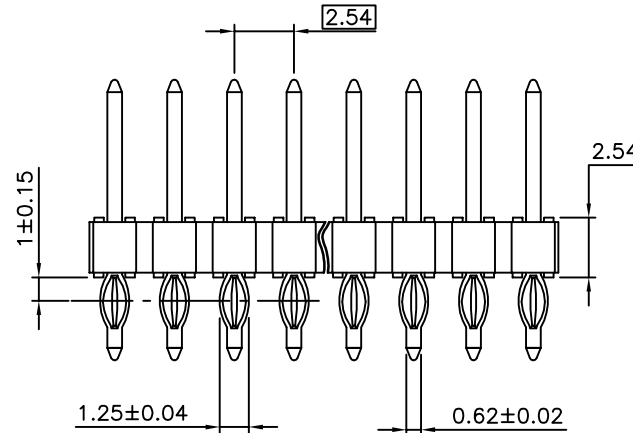
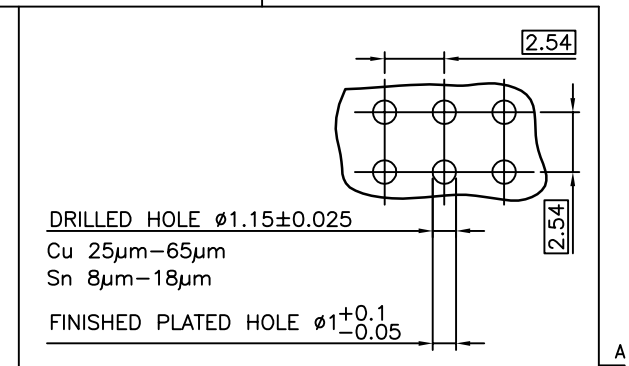
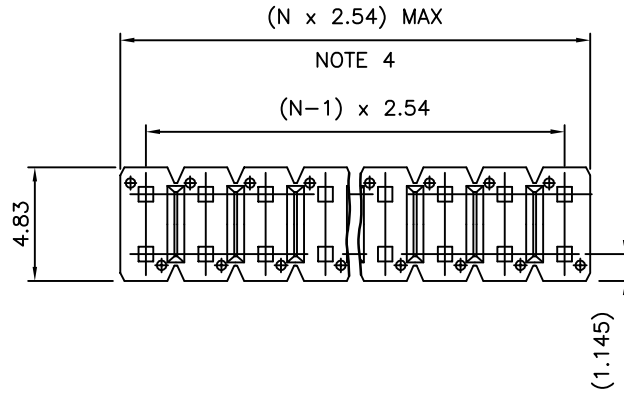
LEAD FREE
SEE NOTE 6 & 7

TOTAL NB OF POS
04 TO 72

| PIN STYLE | DIM "A" REF | DIM "B" ±0.3 | DIM "L" ±0.15 |
|-----------|-------------|--------------|---------------|
| 01 | 7.50 | 4.50 | 14.78 |
| 02 | 10.14 | 4.50 | 17.40 |
| 03 | 5.68 | 4.50 | 12.83 |
| 04 | 14.80 | 4.75 | 22.15 |
| 05 | 8.30 | 4.50 | 15.44 |
| 06 | 6.80 | 3.60 | 12.90 |
| 07 | 6.70 | 3.40 | 12.62 |
| 08 | 5.20 | 3.40 | 11.10 |
| 09 | 8.30 | 3.60 | 14.40 |
| 10 | 9.20 | 3.35 | 15.09 |



RECOMMENDED POSITION ON THE PCB



NOTES:

- HOUSING MAT'L : HIGH TEMPERATURE THERMOPLASTIC. UL94V-0 COLOR: BLACK
- PIN MATERIAL : COPPER ALLOY
- 9N MIN RETENTION IN EITHER DIRECTION
- TO DETERMINE DIMENSIONS :
N = NUMBER OF POSITIONS PER ROW
EXAMPLE : 8 POS PER ROW, N x 2.54 = 20.32mm
- PACKAGING POLYBAGS OR BLIBOX
- LEAD FREE CONNECTOR
- "LF" MEANS THAT THE PRODUCT IS RoHS COMPLIANT THEN MEETS EUROPEAN UNION DIRECTIVES AND OTHER COUNTRY REGULATION AS DESCRIBED IN GS-47-0004

| | | |
|----------------|------------------------------------|------------------------------|
| 93690-7XX-XXLF | GOLD FLASH OVER 1.27µm Ni MIN | 1.0µm TIN OVER 1.27µm Ni MIN |
| 93690-5XX-XXLF | 0.25µm GOLD/GXT OVER 1.27µm Ni MIN | 1.0µm TIN OVER 1.27µm Ni MIN |
| 93690-4XX-XXLF | 3.05µm TIN OVER 1.27µm Ni MIN | |
| 93690-1XX-XXLF | 0.76µm GOLD/GXT OVER 1.27µm Ni MIN | 1.0µm TIN OVER 1.27µm Ni MIN |
| PLATING | CONTACT AREA | PRESS FIT TAIL AREA |

| mat'l. code | | surface | | tolerance | | projection | | product family | |
|-------------|----------------|----------|----------|---------------------------------------|-------------|------------|---------------|----------------|------------------|
| SEE NOTE | | ISO 1302 | | ISO 406 ISO 1101 | | mm | | BSTIK | |
| ltr | ecn no | dr | date | tolerances unless otherwise specified | | mm | | title | |
| R | B-18988 | LMU | 14.10.06 | angles | linear | .x ±0.30 | HDR PRESS FIT | | |
| S | F-22590 | AMA | 15.11.23 | | | .xx ±0.15 | DOUBLE ROW | | |
| | | | | | | .xxx ±0.05 | scale 5:1 | | |
| L | F09-0043 | JCO | 09.05.07 | dr | MULIN.L | 99.06.30 | sheet 1 of 1 | | size |
| M | F10-0229 | LMU | 10.10.04 | engr | COMPAGNON J | 99.06.30 | 93690 | | A3 |
| N | B16804 | JCO | 14.01.21 | chr | NIZZI.P | 99.06.30 | type | | CUSTOMER Drawing |
| P | B-17404 | JCO | 14.04.07 | appd | JM.C | 96.05.06 | | | |
| sheet index | revision sheet | | | | | | | | |