

# LOW FREQUENCY CERAMIC SURFACE MOUNT MICROPROCESSOR CRYSTAL



11.5 x 5.5 x 2.0 mm

ABC2



**RoHS**  
Compliant

## FEATURES:

- Low frequency in small size SMD
- 2.0mm height ideal for high density circuit boards
- Ceramic package offers excellent environmental & heat resistance
- Extended temperature -40°C to +85°C for industrial applications

## APPLICATIONS:

- Wide range in communication & measuring equipment
- Commercial & Industrial applications
- Automotive electronics applications

## STANDARD SPECIFICATIONS:

PARAMETERS	
ABRACON P/N	ABC2
Frequency Range	3.500 MHz to 30.000 MHz
Operation Mode	Fundamental, AT
Operating Temperature	-10°C to + 60°C (see options)
Storage Temperature	-55°C to +125°C
Frequency Tolerance at +25°C	±30ppm
Frequency Tolerance over the Operating Temp. (-10°C to + 60°C)	below 6.0MHz: ±50ppm above 6.0MHz: ±30ppm
Frequency Stability over the Operating Temp. (Ref to +25° C)	± 50ppm max. (see options)
Equivalent Series Resistance	See Table 1
Shunt Capacitance C0	7pF max
Load Capacitance CL	18pF (see options)
Drive Level	100 μW max.
Aging (first year) 25°C ± 3°C	± 5 ppm max.
Insulation Resistance	500 MΩ min. at 100 Vdc ±15V

TABLE 1

Frequency (MHz)	ESR	Temp-D
3.500 - 3.999	200Ω max	±150ppm max
4.000 - 5.999	150Ω max	±100ppm max
6.000 - 9.999	100Ω max	±80ppm max
10.00 - 13.99	80Ω max	±60ppm max
14.00 -30.00	50Ω max	±60ppm max

## OPTIONS AND PART IDENTIFICATION:

(Left blank if standard)

ABC2 - Frequency -   - R -  -  -

Load Capacitance	
10	10pF
12	12pF
16	16pF
18	18pF
20	20pF
22	22pF

**ESR**  
Please specify ESR in ohms. (RXXX)

Operating Temp.	
B	-20°C to +70°C
D	-40°C to +85°C

Freq. Stability	
W	± 25 ppm
Y	± 30 ppm (*)
Z	± 50 ppm (**)
Q	± 100 ppm

(\*) Standard for above 6.0MHz

(\*\*) Standard for below 6.0MHz

Packaging	
T	Tape and Reel



# LOW FREQUENCY CERAMIC SURFACE MOUNT MICROPROCESSOR CRYSTAL

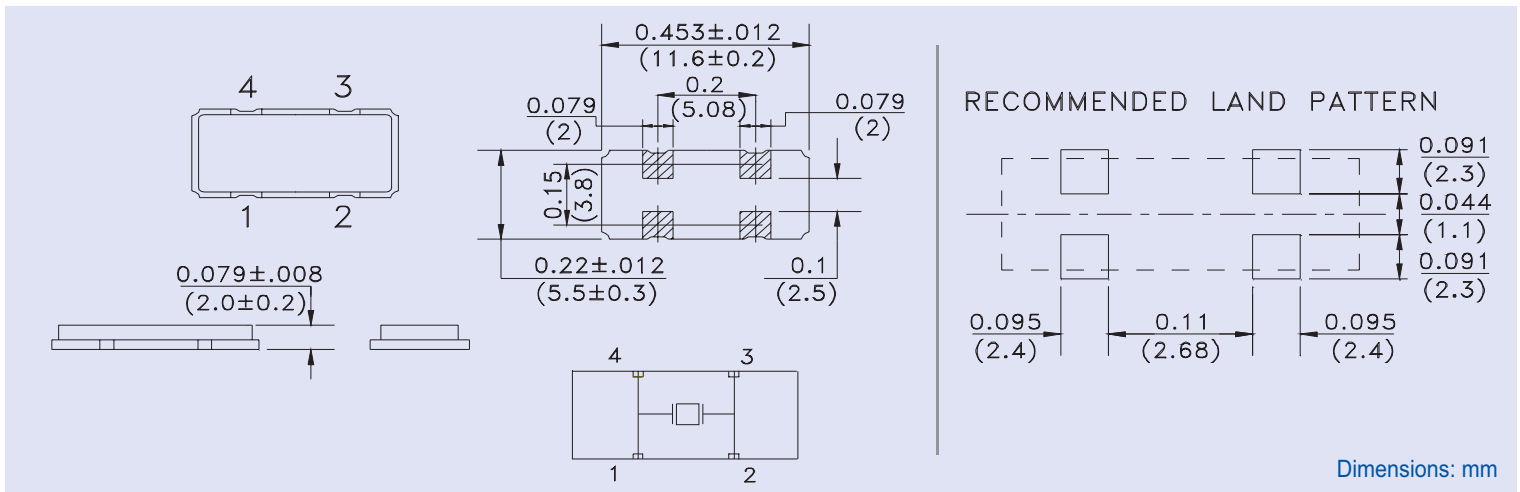


11.5 x 5.5 x 2.0 mm

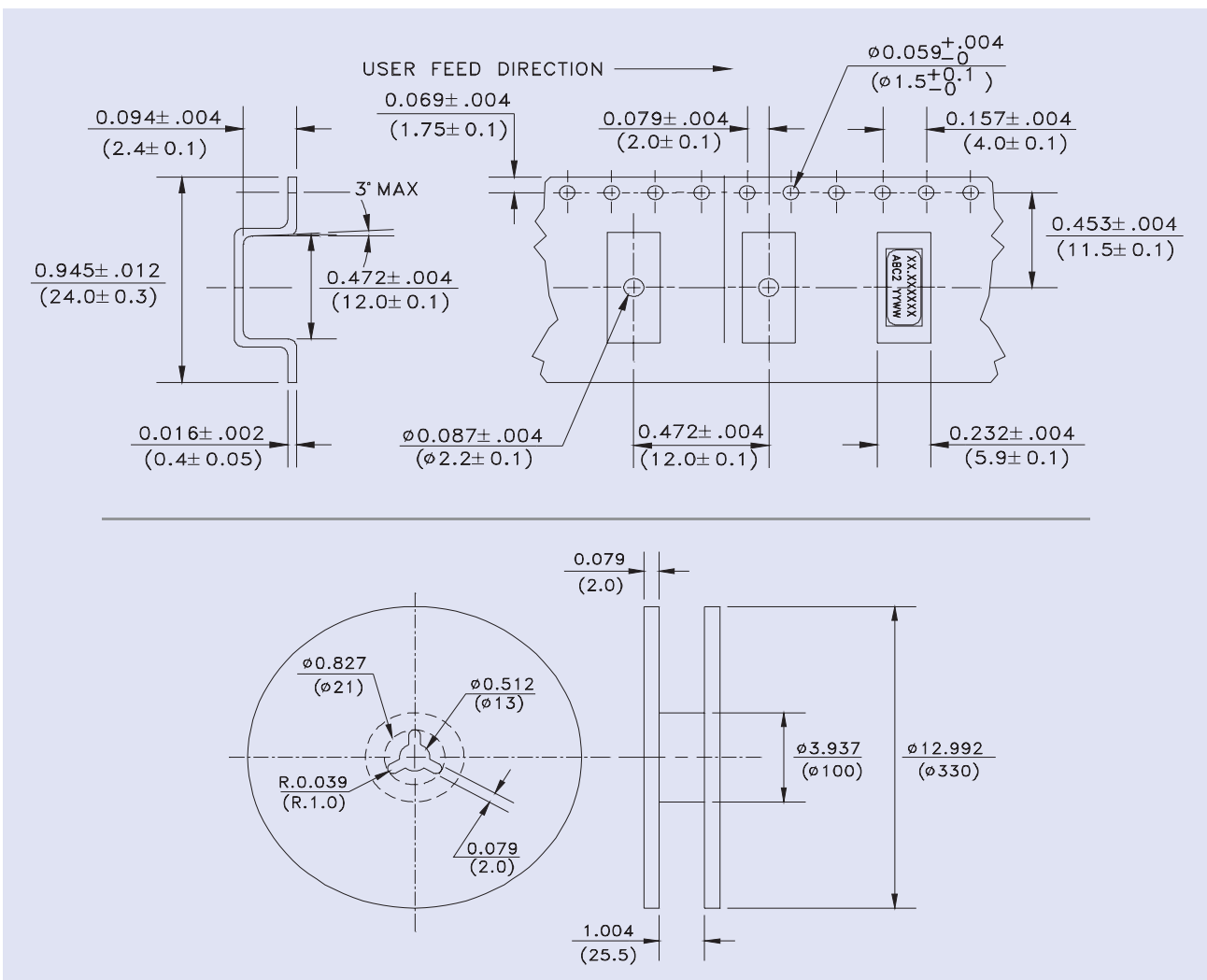
ABC2



## OUTLINE DRAWING:



## TAPE & REEL:



REVISED: 4.05.07

ABRACON IS  
ISO 9001 / QS 9000  
CERTIFIED



30332 Esperanza, Rancho Santa Margarita, California 92688  
tel 949-546-8000 | fax 949-546-8001 | [www.abracon.com](http://www.abracon.com)