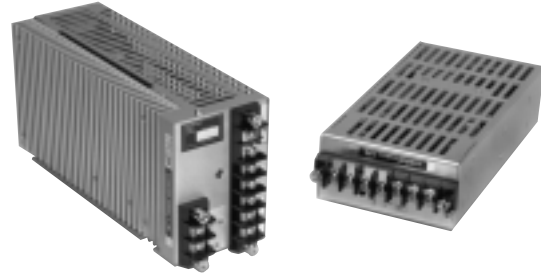


International Power Sources, Inc.

260 Hopping Brook Road
 Holliston, Massachusetts 01746
 Tel. (508) 429-4440 Fax (800) 226-2100
<http://www.intlpower.com>

AC/DC Power Supplies



100 and 150 WATT

FEATURES

- Efficiency to 88%
- Adjustable Outputs
- Soft Start
- Internal EMI/RFI Filter
- Remote Sense
- Remote Disable
- Input/Output Protection
- Compact Size/Light Weight

ORDERING GUIDE: Series/Input Code/Output Code

Example: ACE 102 - 100 Watt Series, 110VAC Input, 12 Volt Output @ 9 AMPS

Series	Output
ACE	100 Watts
ACF	150 Watts

Input Code	Input Range
1	90-132 VAC, 110-175 VDC (47-440 Hz)
2	180-264 VAC, (47-440 Hz)

Output Code
From Chart Below

SERIES		ACE	ACF
OUTPUT CODE	OUTPUT VOLTAGE(S)	OUTPUT CURRENT	OUTPUT CURRENT
01	5VDC	20A	30A
02	12VDC	9A	14A
03	15VDC	7A	11A
04	24VDC	5A	7A
10	48VDC	2A	4A

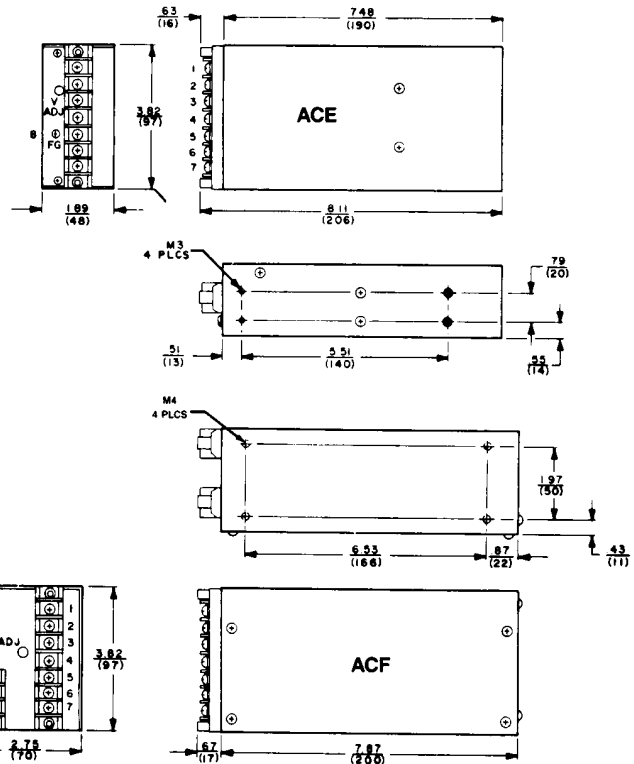
** For 110/220 selectable inputs add suffix "S" to part number.

ELECTRICAL SPECIFICATIONS

All specifications typical at nominal line, full load and 25°C

	ACE	ACF
OUTPUT SPECIFICATIONS		
Voltage Adjustment	±10%	
Line Regulation	.8%	
Load Regulation	.9%	
Ripple and Noise (DC-100MHz)	1% of VOUT & 50mV p-p	
Temperature Coefficient	.03%/°C	
Overvoltage Protection	Output Shutdown	
Short Circuit Protection	Foldback Current Limit	
Remote Sense	Standard	
Remote Disable	Connect RC to (-)S	
Rise Time	100ms Max.	
Hold Up Time	20msec.	
INPUT SPECIFICATIONS		
Input Voltage Range	See Table	
Input Filter	FCC Class A/EM/RFI	
Input Inrush Current	20 Amps Max	
Input Protection	Input Fuse	
GENERAL SPECIFICATIONS		
Switching Frequency	80 kHz Typical	
Efficiency	85% Typical	
Isolation (Input-Output-Case)	500VDC (50Mohm)	
Weight	1.7 lbs	3.1 lbs.
ENVIRONMENTAL SPECIFICATIONS		
Operating Temperature	0°C to 50°C (to 60°C @ 50% Load)	
Storage Temperature	-40°C to 85°C	
Humidity	85%	
Vibration	(5-10Hz) 10mm, (10-55Hz) 2G	
Shock	30G	
Safety	UL 1012 Compliance	

TERMINAL	ACE	ACF
1	+Vout	+Vout
2	+Vout	+Vout
3	-Vout	+S
4	-Vout	-S
5	Filter Gnd (LFG)	-Vout
6	ACin	-Vout
7	ACin	RC
8	Case Gnd (FG)	ACin
9	—	ACin
10	—	Case Gnd (FG)



Specifications subject to change