

# 8782.0ST.B100.04 i-RET ANTENNA TBB65 2.0m ALXT-824-960/1710-2170-65-16.2i/16.5i/16.5i-Ai-D

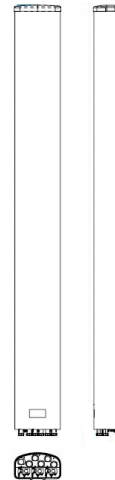
POLARIZATION: XXX-Pol  
 FREQUENCY (MHz): 824-960, 2x1710-2170  
 HORIZONTAL BEAM WIDTH (°): 65  
 GAIN (dBi/dBd): 16.2/14.1, 16.5/14.4, 16.5/14.4  
 TILT: 0-12°/0-12°/0-12°  
 LENGTH: 2.0m(6'6")

## ELECTRICAL SPECIFICATIONS\*

	824-960		2x1710-2170		
	806-894	880-960	1710-1880	1850-1990	1920-2170
Frequency range (MHz)					
Frequency band (MHz)	806-894	880-960	1710-1880	1850-1990	1920-2170
Gain (dBi/dBd)	15.8/13.7	16.2/14.1	16.0/13.9	16.1/14	16.5/14.4
Polarization	Dual linear ±45°		Dual linear ±45°		
Nominal Impedance (Ω)	50		50		
VSWR	<1.5:1		<1.5:1		
Horizontal beam width, -3 dB (°)	71	67	65	65	63
Vertical beam width, -3 dB (°)	9.6	8.6	10	9.4	8.7
Electrical down tilt (°)	0 - 12		0 - 12		
Side lobe suppression, vertical 1st upper (dB)	>18,17,16,16@ 2,5,7,8	>18,17,16,16@ 2,5,7,8	>17,15,13@ 0,6,10	>17,15,14@ 0,6,10	>17,16,15@ 0,6,10
Isolation between inputs (dB)	>30	>30	>30	>30	>30
Inter band Isolation (dB)	>34		>34		
Tracking, horizontal plane ±60° (dB)	<1.0	<1	<1.5	<2	<4
First null fill (dB)	25	25	25	25	25
Vertical beam squint (°)	0.5	0.5	0.5	0.5	0.5
Front to back ratio (dB)	>28	>30	>27	>28	>30
Front to back ratio, total power (dB)	>26	>26	>25	>27	>27
Cross polar discrimination (XPD) 0° (dB)	16	15	16	16	15
Cross polar discrimination (XPD) ±60° (dB)	>11	>9.2	>6.7	>6.3	>6.3
Far field coupling	<0.27	<0.47	<0.52	<0.66	<0.66
IM3, 2xTx@43dBm (dBc)	<-153		<-153		
IM7, 2xTx@43dBm (dBc)			<-160		
Power handling, average per input (W)	300		250		
Power handling, average total (W)	600		500		

## MECHANICAL SPECIFICATIONS\*

Connector	6x 7/16 DIN Female 4x AISG
Connector position	Bottom
Dimensions, HxWxD, mm (ft)	2033x280x155mm (6'8"x11"x6")
Mounting	Pre-mounted standard brackets
Weight, with brackets, kg (lbs)	22.9 (50.4)
Weight, without brackets, kg (lbs)	17.4 (38.3)
Wind load, frontal/lateral/rear side 42 m/s Cd=1.6 (N)	653
Maximum operational wind speed, m/s (mph)	42 (93)
Survival wind speed, m/s (mph)	55 (123)
Lightning protection	DC grounded
Operating Temperature	
Radome material	ASA
Package size, HxWxD, mm (ft)	2175x355x255 (7'2"x14"x10")
Radome colour	Light Grey
Shipping weight, kg (lbs)	27.5 (60.6)
RET	AISG1.1 (AISG2.0/Ericsson) on RED & WHITE system
Brackets	7256.00,7454.00A,2210.00



\*All specifications subject to change without notice. Please contact your Powerwave representative for complete performance data.

## ANTENNA PATTERNS\*

For detailed patterns visit <http://www.powerwave.com/rpa/>.