

AS85049/32-1
90° Adapter, Non-Environmental, RFI



Miscellaneous
Accessories

MIL-DTL-38999
Series I & II

M85049/32-1-8
 Basic Part No. _____ Dash No. _____

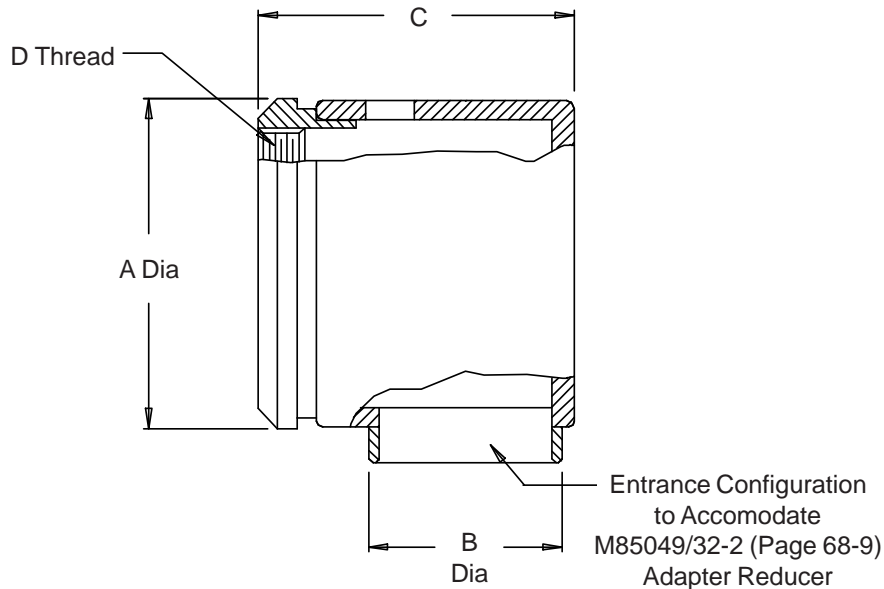


TABLE I

| Dash No. | Shell Size | | A Dia Max | B Dia Max | C Max | D Thread Class 2B |
|----------|------------|-----------|--------------|-------------|--------------|-------------------|
| | Series I | Series II | | | | |
| 8 | 9 | 8 | .594 (15.1) | .359 (9.1) | .719 (18.3) | .4375 - 28 UNEF |
| 10 | 11 | 10 | .719 (18.3) | .406 (10.3) | .766 (19.5) | .5625 - 24 UNEF |
| 12 | 13 | 12 | .844 (21.4) | .500 (12.7) | .859 (21.8) | .6875 - 24 UNEF |
| 14 | 15 | 14 | .969 (24.6) | .578 (14.7) | .938 (23.8) | .8125 - 20 UNEF |
| 16 | 17 | 16 | 1.094 (27.8) | .641 (16.3) | 1.000 (25.4) | .9375 - 20 UNEF |
| 18 | 19 | 18 | 1.219 (31.0) | .688 (17.5) | 1.047 (26.6) | 1.0625 - 18 UNEF |
| 20 | 21 | 20 | 1.344 (34.1) | .734 (18.6) | 1.094 (27.8) | 1.1875 - 18 UNEF |
| 22 | 23 | 22 | 1.469 (37.3) | .796 (20.2) | 1.156 (29.4) | 1.3125 - 18 UNEF |
| 24 | 25 | 24 | 1.594 (40.5) | .859 (21.8) | 1.219 (31.0) | 1.4375 - 18 UNEF |

1. For complete dimensions see applicable Military Specification.
2. Metric dimensions (mm) are indicated in parentheses.
3. Material: Copper alloy. Finish: Tin-lead solder plate.