



# ATVS-2020™

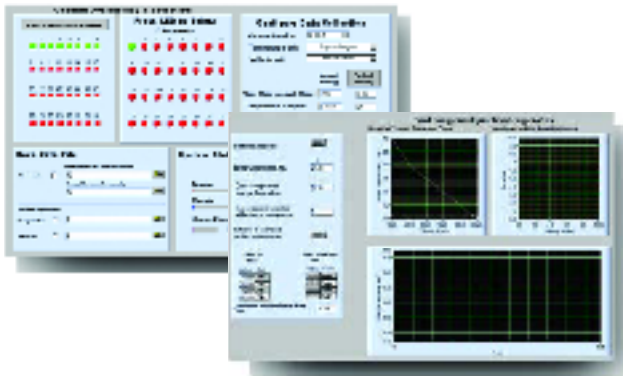
## AUTOMATIC TEMPERATURE AND VELOCITY SCANNER

The ATVS-2020™ Automatic Temperature & Velocity Scanner is a patented, multi-channel hot wire anemometer system for single or multi-point measuring of air temperature and velocity. Each sensor measures both temperature and velocity, which eliminates errors introduced as a result of the flow being non-isothermal.

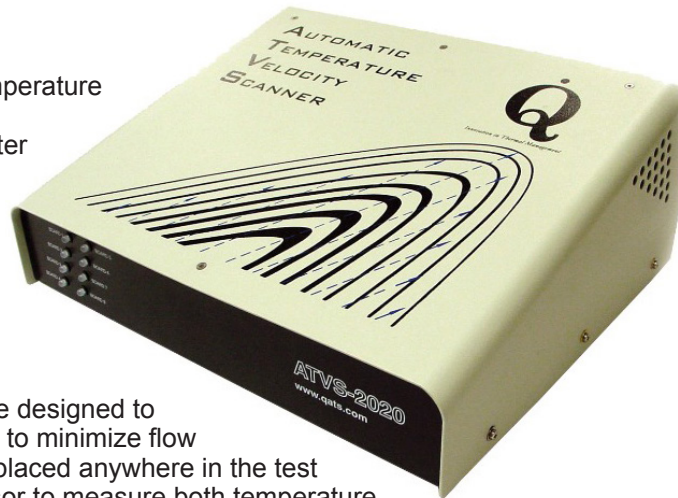
The unique, patented sensors are designed to be flexible, robust and low profile to minimize flow disturbance. They can be easily placed anywhere in the test domain. The use of a single sensor to measure both temperature and velocity eliminates errors introduced as a result of the flow being non-isothermal.

The ATVS-2020™ is a scientific instrument. Great care is taken in the calibration process of each sensor. The system can accommodate up to 32 channels (sensors) for easy and accurate mapping of the velocity and temperature fields of the test domain.

The ATVS-2020 is a portable system that can handle a variety of thermal measurement tasks. It requires a PC for operation and uses the stageVIEW™ software for data acquisition and reporting.



stageVIEW™ software for automated data acquisition and reduction



### OVERALL DIMENSIONS (D X W X H)

27.9 cm x 34.3 cm x 13.5 cm  
(11" x 13.5" x 5.3")

### TEMPERATURE RANGE

-20 to 120°C (-4 to 248°F) (±1°C)

### FLOW RANGE

0 to 51 m/s (0 to 10,000 ft/min) (± 2%)

### NUMBER OF CHANNELS

32

### SOFTWARE

stageVIEW™

### POWER

110V or 220V

### WEIGHT

5 kg (10 lbs.)

### CONNECTION

USB port

### FEATURES:

#### » Single Sensor Technology

The only system that can measure both temperature and air velocity with a single sensor

#### » Accuracy and Ease of Use

Offers research quality results with the ease of use of hand-held meter

#### » Up to 32 Sensors

For single point measurement of air velocity & temperature

#### » PCB Testing

Test actual or simulated PCBs for thermal and flow distribution

#### » High & Low Speed Calibration

Sensors are calibrated for both low (natural convection) and high velocity flows from 0 to 51 m/s (10,000 ft/min)

#### » stageVIEW™ Software

For automated data acquisition, reporting and special thermal analysis module for quick evaluation of component temperature

#### » Sensor Ports

Measure velocity and temperature through the ports holes

#### » Free Lifetime Tech Support

For further technical information, please contact Advanced Thermal Solutions, Inc. at **1-781-769-2800** or **www.qats.com**

